



# WOODWARDS

ESTD.  
1883

**FOUNDED 1883 – 5 GENERATIONS OF SUCCESS**

**Special Online Auction of Antiques, Fine Art & Collectables**

**Featuring contents removed from residences in**

**St Lukes & Carrigaline**

## **Antiques Auction**

**Antiques, Fine Art,**

***Silver & Collectables, etc.***

**Saturday 5th December at 10am**



**easy Live Auction.com**

**LIVE AUCTIONS**

**Joseph *WOODWARD* & Sons, Ltd.**

**Woodwards Auction Rooms, 26, Cook Street, Cork.**

**[WWW.WOODWARD.IE](http://WWW.WOODWARD.IE)**

**JOSEPH WOODWARD & SONS LTD**

**Founded 1883**

**€4**





# WOODWARDS

ESTD.  
1883

**137 years serving the people of Cork**

## ONLINE AUCTION

**Antiques, Fine Art, Silver & Collectables**

**Saturday December 5<sup>th</sup> 2020 at 10am**

**Viewing from Nov 28<sup>th</sup> with masks and SD**

**Bidding by written / emailed bids, online bidding**

*Full details and bidding at [www.woodward.ie](http://www.woodward.ie)*

*Live Bidding with*



## FORTHCOMING AUCTIONS:

### SPECIAL AUCTION



**ANTIQUES, FINE ART, & COLLECTABLES**  
**CONTENTS FROM 'SALEENS', CARRIGALINE, CO. CORK**  
**January 2021 Entries Now Invited**

### SPECIAL AUCTION



**ANTIQUES, FINE ART, & COLLECTABLES**  
**'MILLBORO HOUSE', LEE ROAD, CORK**  
**February 2021**

### Paintings and Sculpture:

*When the Forename(s) and Surname of the Artist are given, in our opinion this is a work of the Artist.*

*When the Initials of the Forename(s) and the Surname of the Artist are given, in our opinion this is a work of the period of the Artist which may be wholly or partly his work.*

*When the Surname only of the Artist is given, in our opinion this is a work by the school, or by one of the followers of the artist, or in his style and of uncertain date.*

*Purchasers are allowed seven days from the date of the Auction to satisfy themselves as to the accuracy of the catalogue description.*

*Please note the Conditions of Sale as displayed in the Auction Rooms.*

*Estimates given are our opinion at the time and are subject to revision.*

### Collection of Purchases:

**Small counter top items from Monday to Friday by person,**

**Larger items by courier only subject to pre-payment**

Uncollected items will be subject to a daily storage/insurance **charge** of €15 per day for furniture and €5 per day for other items.

Please note – no vehicular access to Cook Street from 11am – 5pm

## Joseph **WOODWARD** & Sons, Ltd.

### 26, Cook Street, Cork

Tel: 021-427 3327 email: [auctions@woodward.ie](mailto:auctions@woodward.ie)

## A Family Business since 1883

**[www.woodward.ie](http://www.woodward.ie)**



1. Assorted lot of silver-plated items, etc. in box



8. French style oval triple dressing table mirror with foliate decoration



2. Assorted lot of glasses in box



9. Edwardian oak framed firescreen with foliate decoration



3. Six copper and brass shaped shot flasks



10. Edwardian yew chest of two short and two long drawers, with brass drop handles and bracket feet



4. Edwardian oak framed needlepoint firescreen with scenic decoration



11. Edwardian oblong mahogany coffee table on shaped cabriole legs



5. Edwardian design modern corner display cabinet with glazed door and shelving, press under with brass drop handles



12. Dutch style 'wag on the wall' wall clock with foliate and bird decoration, and weights



6. Edwardian style pine cheval mirror with tapering columns and shaped plinths



13. Edwardian style nest of three tables of graduating sizes with leatherette insets



7. Edwardian three tier cake stand with bracket feet



14. Victorian dressing stool with upholstered seat and cabriole legs

Imperfections Not Stated



- 15.** Edwardian mahogany pedestal sideboard with bowed central drawers, shelved side presses, brass drop handles, cabriole legs with claw on ball feet



- 16.** Edwardian mahogany locker with raised gallery



- 17.** Edwardian mahogany framed swivel mirror with cabriole columns and serpentine fronted base



- 18.** Edwardian mahogany stationary box with mother of pearl inlay and lined interior



- 19.** Edwardian style travelling chessboard with carved pieces



- 20.** Georgian style mahogany chest of two short and three long drawers with oval brass drop handles and escutcheons, on bracket feet



- 21.** Edwardian walnut round occasional or coffee table with carved border, on cabriole legs with claw on ball feet



- 22.** Edwardian mahogany framed swivel mirror with barley-twist columns, turned stretcher, on bracket feet



- 23.** Edwardian style Art Deco wall mirror with bevelled sides



- 24.** Edwardian mahogany hall or side table with two drawers, circular handles, on tapering legs



- 25.** Edwardian mahogany D-end twin pillar dining table with reeded borders, extra leaf inset, raised on ball turned columns, on reeded tripods with brass lion-claw feet



- 26.** Edwardian nest of yew tables with raised borders, spindle columns, on bracket feet



- 27.** Ivory ground cashmere carpet with all over floral design



- 28.** Victorian Arts & Crafts oak stool with turned stretcher and legs





- 29.** Edwardian walnut and mahogany oval occasional table with wavy borders, raised on baluster turned legs with pad feet



- 30.** Victorian mahogany three tier demi-lune dumbwaiter with raised galleries, turned finials, on turned tapering legs



- 31.** Edwardian design nest of three tables of graduating sizes with glass tops, on cabriole legs with pad feet



- 32.** Preserved trout in display case



- 33.** Stuffed trout in glass display case 'Caught Cong river 19/05/2002'



- 34.** Edwardian cross-banded oak and mahogany deeds or storage box with shaped handle and bracket feet



- 35.** Victorian mahogany chest of two short and two long drawers with turned handles, on bracket feet



- 36.** Edwardian oak oblong occasional table with lid, turned rails and columns



- 37.** Edwardian Mariners brass telescope with adjustable legs, in presentation case



- 38.** Pair of brass ships lamps with coloured glass insets



- 39.** Victorian mahogany two tier occasional or hall table with two drawers, brass drop handle, on chamfered legs



- 40.** Victorian cross-banded demi-lune side cabinet with bowed doors, brass drop handles, on tapering legs with spade feet



- 41.** Victorian oak dressing stool with adjustable swivel top, baluster turned column, on scroll decorated cabriole legs



- 42.** Fine woven heavy pile Iranian rug with Senadash design



- 43.** Ornate metal hand bell with shaped timber handle



- 44.** Edwardian mahogany lamp or wine table with piecrust border, vase turned and reeded column, on hipped tripod



- 45.** Victorian oak pedestal desk with three frieze drawers, six pedestal drawers, turned handles, brass escutcheons, on plinths



- 46.** Edwardian mahogany framed firescreen with foliate decoration and bracket feet



- 47.** Art Deco style domed mantle clock with silvered dial



- 48.** Edwardian rosewood stationary box with mother of pearl inset



- 49.** Edwardian mahogany fuel cabinet with drop-down front, lined interior, brass handle and mounts, on bracket feet



- 50.** Victorian mahogany circular occasional or centre table with round top, vase turned column, on hipped tripod with pad feet



- 51.** Edwardian design serpentine fronted hall or side table with frieze drawer, drop handles, on reeded square tapering legs



- 52.** Regency design bevelled glass wall mirror with serpentine shaped top and foliate decoration



- 53.** Edwardian style ebonised wall bracket with shaped back plate



- 54.** Edwardian inlaid mahogany oblong occasional or coffee table with crossbanding, on square tapering legs with spade feet



- 55.** Edwardian inlaid mahogany bow-fronted washstand with fold-out top, press and drawer under with turned handles, on square tapering legs



- 56.** Edwardian mahogany lamp or wine table with piecrust border, vase turned and reeded column, on hipped tripod



- 63.** Pair of Dutch delft plaques with river-side scene decoration



- 57.** Victorian brass chestnut roaster with serpent decoration and twist handle



- 64.** Edwardian style mahogany oblong coffee table with reeded borders, lyre shaped supports, brass lion-claw castors



- 58.** Victorian copper bed warmer with turned handle



- 65.** Chippendale design oblong mahogany dining table with extra leaf inset, rope edge carved borders, on cabriole legs with claw on ball feet



- 59.** Ivory ground cashmere rug of Bukhara design



- 66.** Edwardian mahogany lamp or wine table with piecrust border, vase turned reeded column, on hipped tripod



- 60.** Georgian mahogany chest of four drawers with reeded borders, oval brass drop handles and escutcheons, on turned legs



- 67.** Edwardian style brass coal scuttle of circular tapering form, with handles



- 61.** Edwardian inlaid and crossbanded mahogany occasional or coffee table with stretchers and chamfered legs



- 68.** Victorian style brass companion set with ball shaped tops and pierced gallery



- 62.** Pair of circular Dutch delft plaques with Mediterranean scene decoration



- 69.** William IV mahogany barometer with thermometer, circular brass framed dial, foliate decoration, by James Moore, Derby





- 70.** Edwardian Sheraton style inlaid and crossbanded mahogany sideboard with string and herringbone and foliate inlay, shaped frieze drawer, two side presses, shelf under, ornate brass handles, on inlaid square tapering legs with spade feet



- 71.** Edwardian mahogany butlers table with serpentine gallery, on square chamfered legs



- 72.** Indian Benares brass baluster shaped flower vase with figured and serpentine decoration



- 73.** Indian circular Benares brass tray with foliate decoration



- 74.** Ornate Balinese carved teak cabinet with scroll and foliate carving, panelled doors, two drawers under, shaped apron, on cabriole legs



- 75.** Ornate Balinese oblong coffee table with ornate foliate and scroll carving, having glass top, on carved cabriole legs



- 76.** Ornate Balinese square occasional or coffee table with ornate foliate and scroll carving, on carved cabriole legs



- 77.** Ornate bronzed table lamp with ornate multi-coloured shade, column on circular base



- 78.** Edwardian style bankers lamp with green glass shade, shaped arm, on circular base



- 79.** Framed bevelled glass wall mirror with domed top and scroll decoration



- 80.** Edwardian inlaid mahogany hexagonal shaped tea table with fold over top, gateleg support, inlaid frieze, on square tapering inlaid legs



- 81.** Edwardian mahogany square topped jardiniere stand with square tapering legs



- 82.** Edwardian style circular oak champagne bucket with copper banding and brass handles, by Geraud Lefitte, 1933, Illeur ouvries de France





- 83.** Oriental carved teak triple top stationary box, with boat and foliate carving



- 84.** Ornate Regency design bevelled glass wall mirror with foliate and egg & dart decoration



- 85.** Edwardian mahogany Pembroke table with drop leaves, rounded borders, pull-out supports, on square tapering legs



- 86.** Edwardian mahogany dropleaf side table with reeded borders, pull-out supports, frieze drawer with brass handles, on square tapering legs with spade feet



- 87.** Edwardian oval swivel mirror with shaped columns and stretcher, on bracket feet



- 88.** Victorian carved oak wheel barometer, thermometer, circular copper framed dial and scroll decoration



- 89.** Cream ground full pile fine woven rug with bespoke medallion design



- 90.** Edwardian inlaid walnut floor bookcase with foliate inlay, ormolu mounts, shelved and lined interior



- 91.** Edwardian mahogany locker with raised gallery, press under, on square tapering legs



- 92.** Four limited edition porcelain plates with timber borders Daventry Pottery, Edwin M Knowles, Anri, Porcelaine de Limoges, France.



- 93.** Four circular timber biscuitaires or spice jars with lids



- 94.** Edwardian inlaid mahogany lamp or wine table with turned column, on hipped tripod



- 95.** Edwardian inlaid and crossbanded mahogany bureau with fall-down front, fitted interior, pull-out supports, three drawers under with brass drop handles, on bracket feet



- 96.** Edwardian nest of tables with raised galleries, spindle columns, on bracket feet with stretchers



- 97.** Cast iron stick or umbrella stand with foliate and dog decoration



- 98.** Georgian design helmet shaped coal scuttle with shaped handles



- 99.** Victorian design domed bevelled glass overmantle with scroll decoration



- 100.** William IV mahogany and rosewood card table with swivel fold-over top, angled corners, raised on turned columns, with plinth, on splayed legs with brass cap toes



- 101.** Edwardian inlaid and crossbanded mahogany wine cooler with square liner, ornate herringbone and shell inlay, on inlaid square tapering legs



- 102.** Victorian style wall mirror with ornate foliate decoration



- 103.** Red ground cashmere rug with floral medallion design



- 104.** Edwardian brass fire kerb with round rails



- 105.** Edwardian inlaid mahogany envelope card table with swivel top, fold out diamonds with counter wells, frieze drawer with brass handles, on inlaid square tapering legs



- 106.** Edwardian mahogany circular wine table with leatherette top, vase turned reeded column, on hipped tripod



- 107.** Set of three Oriental porcelain figures with ornate blue and white serpent and foliate decoration, stamped bases



- 108.** Pair of circular Imari wall plaques with wavy rims, burnt ochre and deep blue foliate decorated panels



- 109.** Pair of circular Cantonese plates or plaques with ornate foliate and figured panels





- 110.** Edwardian cross-banded mahogany serpentine fronted sideboard with frieze drawer, nappery drawer, two bowed side drawers, on square tapering legs with spade feet



- 111.** Victorian mahogany circular occasional table with tip-up top, raised on turned tapering column, on splayed tripod with ball feet



- 112.** Ivory ground cashmere rug with Persian panel design



- 113.** Edwardian inlaid mahogany framed wall mirror 70x62cm



- 114.** Edwardian mahogany framed swivel mirror with reeded columns, acorn finials, the base with three drawers having drop handles, on turned legs



- 115.** William IV rosewood tea table with swivel fold-over top, baluster shaped column with foliate collar, on shamrock shaped plinth with scroll feet



- 116.** Ornate electric table lamp with multi-coloured panelled shade, and baluster body, on shaped base



- 117.** Mariners brass gimbed compass in presentation box, stamped Stanley, London



- 118.** Mariners brass extending telescope on adjustable stand



- 119.** Edwardian framed bevelled glass wall mirror 95x65cm



- 120.** William IV walnut work or sewing table with string inlay, interior fitted with material well, on turned column, on carved hipped tripod with scroll feet



- 121.** William IV mahogany and walnut lamp or wine table with turned top, baluster turned column, on scalloped base with claw feet



- 122.** Ornate bronzed group of a horse with two whippets, on shaped oval base



- 123.** Ornate bronzed group of soldier and horse, on foliate decorated oval base



- 124.** Edwardian style circular marble topped occasional or lamp table with ormolu mounts, on reeded turned legs



- 125.** Victorian mahogany dining table with rounded borders, extra leaf inset, on turned reeded tapering legs with castors



- 126.** Edwardian mahogany oblong occasional table with reeded borders, raised on lyre shaped supports, with turned stretcher and lionclaw feet



- 127.** Fifteen piece Royal Albert 'Avonlon' design tea service with gilt rims



- 128.** Pair of Guinness advertising ewers with shaped handles



- 129.** Georgian circular inlaid mahogany footstool with upholstered top, on turned legs



- 130.** Georgian Sheraton style secretaire with ornate string and foliate inlay, pull-out secretaire having drop-down front, interior fitted with drawers, pigeon holes and secret drawers, two drawers under with brass drop handles, having oval inlaid panels with foliage and musical instruments, on bracket feet



- 131.** Louis XV style kingwood oval commode with raised back, marble inset, bowed drawer, press under, ornate ormolu mounts and handle, on turned reeded columns, with oval plinth on turned legs



- 132.** French mantle clock with circular brass framed enamel dial, stamped C J Schmitnagel, on shaped base



- 133.** French brass cased carriage clock with bevelled glass insets, enamelled dial, stamped R & Co., Paris



- 134.** Arts & Crafts oak framed bevelled glass wall mirror with oval carved panels 58x58cm





- 135.** Edwardian inlaid mahogany display cabinet or bookcase with string and urn inlay, shelved interior, on bracket feet



- 136.** Dark ground Iranian runner with all over floral pattern



- 137.** Circular cut glass flared bowl with ornate decoration and matching plate



- 138.** Art deco photograph frame on marble base with brass swan



- 139.** Ornate bronzed bankers lamp with multi-coloured shade and shaped base



- 140.** Victorian mahogany card table with bowed ends, swivel fold-over top, raised on turned tapering columns with turned stretcher and finials, on cabriole legs with bracket feet



- 141.** Cream ground cashmere carpet with all over floral pattern with bespoke red border



- 142.** Ornate chess set with figured pieces in carrying case



- 143.** Edwardian style oak cased bracket clock with circular brass framed enamel dial, ornate ormolu mounts and pendulum



- 144.** Victorian style oblong footstool with foliate upholstery, on baluster turned tapering legs



- 145.** Georgian mahogany longcased grandfather clock with swanarch pediment, shell mounts, scroll decoration, the domed brass face with ornate ormolu mounts, silvered dials, date aperture, and brass pendulum, on bracket feet



- 146.** Edwardian style bevelled glass mahogany framed wall mirror with ornate scroll decorated mounts



- 147.** Mariners brass leather bound extending telescope in presentation case



- 148.** Mariners brass sextant in presentation case



- 149.** Victorian style three tier small dumb-waiter with rounded tiers, baluster turned columns and finial, on hipped tripod



- 150.** Victorian mahogany library or hall table with rounded borders, two frieze drawers, angled columns, on oblong plinths with ball feet



- 151.** After Rodin 'The Thinker' bronzed figure on shaped base



- 152.** Victorian style bronzed group 'Hounds' on shaped base



- 153.** Art Deco style bevelled glass mirror 51x72cm



- 154.** Edwardian mahogany desk set with inkwells and pen tray



- 155.** Georgian oak hall or side table with lift-up lid, egg and dart border, ornate foliate and scroll carving, on pierced lyre shaped supports with feather stretcher, on ornately carved legs



- 156.** Victorian walnut footstool with upholstered top and cabriole legs



- 157.** Oriental style cloisonne flower vase of baluster form, with decorated band



- 158.** Oriental style baluster shaped cloisonne vase of slender form, with circular base



- 159.** Victorian design brass fire fender with ball and rope edge decoration (6ft)





- 160.** Edwardian mahogany secretaire bookcase with glazed doors, reeded adjustable shelving, the pull-out secretaire with drop-down front, interior fitted with drawers and pigeon holes, with three drawers under, bun handles and brass escutcheons, on plinth



- 161.** Edwardian design oak grandmother clock with domed top, barleytwist columns, domed brass faces, ormolu mounts and silvered dial, panelled door, brass pendulum, on plinth



- 162.** Large red ground Persian Marshad carpet with full pile, traditional design



- 163.** Cast iron 'Beware of the dog' sign



- 164.** Vintage cast iron Ford garage sign



- 165.** Edwardian mahogany demi lune tea table with string inlay, fold-over top, gate-leg support, inlaid frieze, on square tapering legs



- 166.** Cast iron 'Irish Mist' advertising figure of a guard



- 167.** Ornate bronzed ornament of a horse, on shaped base



- 168.** Victorian mahogany square footstool with needlepoint foliate upholstery on cabriole legs



- 169.** French style mahogany cased bracket clock with circular brass framed enamel dial and pendulum



- 170.** Georgian mahogany bureau with fall-out front, pull-out supports, interior fitted with drawers and pigeon holes, four drawers under with brass drop handles and escutcheons, on bracket feet



- 171.** Waterford Crystal cut glass water decanter and glass with hobnail decoration



- 172.** Waterford Crystal cut glass water decanter and glass with hobnail decoration



- 179.** Edwardian design circular mahogany framed enamel wall clock with brass dial and weights



- 173.** Oblong wall mirror in foliate decorated gilt frame 92x31cm



- 180.** Georgian mahogany demi-lune card table with capstan fold-over top, string inlay, gateleg supports, walnut frieze, on inlaid square tapering legs



- 174.** Georgian circular inlaid walnut footstool with needlepoint upholstery, ornate string and ebony inlay



- 181.** Washed red ground Persian Heriz runner



- 175.** Edwardian design inlaid mahogany D-end dining table with reeded borders, extra leaf inset, raised on baluster turned tapering columns, with stretcher, on reeded splayed legs with brass lion-claw feet on castors



- 182.** Ornate bronzed electric table lamp with multi-coloured faceted shade and baluster shaped column, on circular base



- 176.** Oval bevelled glass topped Art Deco coffee or occasional table with ornate wheatsheaf effect brass stand



- 183.** Art Deco bronzed figure of a dancing girl, on round marble base stamped 'DH Chiparus'



- 177.** Bevelled glass occasional table with ornate wheatsheaf effect brass stand



- 184.** Edwardian design mahogany butlers table with detachable tray, having raised borders, on reeded tapering legs with stretchers



- 178.** Vintage Guinness Extra Stout oval cast iron advertising sign





- 185.** Georgian mahogany grandfather clock with domed top, circular enamel dial with seconds dial, panelled door, on plinth, 'Sterling, Limerick'



- 186.** Edwardian oak framed oval bevelled glass wall mirror with beaded decoration



- 187.** Brass ships clock with enamel face and seconds dial stamped AW Hubbard



- 188.** Maori old wooden wahaika shaped club



- 189.** Carved timber Aboriginal shield with markings



- 190.** Edwardian mahogany display case on stand with astagal glazed doors, shelved interior, frieze drawer with brass drop handles, on square tapering legs



- 191.** Edwardian mahogany bijouterie or small display case with bevelled panels, brass hinges, drawer, on tapering legs with ornate stretcher



- 192.** Edwardian mahogany framed heart shaped bevelled glass wall mirror with shaped columns and bracket feet



- 193.** 'Leonardo' glass fruit or flower bowl



- 194.** Pair of Waterford Crystal oblong vegetable or sweet plates with hobnail decoration



- 195.** Pair of Edwardian mahogany five tier shelf units with spindle columns, drawers with circular brass drop handles, on plinths



- 196.** Edwardian style mahogany standard lamp with turned reeded column, foliate carving, on tripod with claw on ball feet, with shade



- 197.** Carved Oriental figure of a lute player on walnut base



- 198.** Oriental carved bone figure of a princess on shaped base



- 199.** Regency style inlaid crossbanded rosewood work table with brass inset, serpentine sides, ormolu mounts, lift-up lid, with fitted pull-out interior, on ormolu mounted sabre legs



- 200.** Pair of Waterford Crystal cut glass 5 branch chandeliers with S-shaped arms, scalloped sconces, bright cut drops, and a pair of 2 branch wall brackets 55x55cm



- 201.** Large red ground Persian Kashann full pile carpet with floral medallion design



- 202.** Edwardian inlaid mahogany converted knife /stationery box with shaped front, lid, sectioned interior, with ornate ribbon, floral and string inlay



- 203.** Pair of large porcelain bottle vases profusely decorated with flowers and figured panels, by Francis Boucher, 13ins high.



- 204.** Meissen style flower vase with ornate foliate encrustation, gilt decoration and shaped handles



- 205.** Georgian walnut bowfronted chest of two short and three long drawers with oval brass drop handles, on bracket feet



- 206.** Edwardian mahogany overmantle with two bevelled mirror insets, bow decorated pediment and sides



- 207.** Edwardian style circular mahogany framed bevelled glass wall mirror



- 208.** Edwardian mahogany wheel barometer with foliate decorated pediment, thermometer, and circular dial



- 209.** Porcelain Bulmers Cider advertising bird on a branch





- 210.** Edwardian inlaid walnut davenport with upper fitted pen tray, lift up, lid with fitted interior, four side drawers with bun handles, cabriole columns, on plinth with casters



- 211.** Mariners folding natural sign compass, stamped Stanley, London, in presentation case



- 212.** Shaped brass sundial with shaped gnomon



- 213.** Edwardian mahogany cased bracket clock with circular brass framed enamel dial, domed top and bracket feet



- 214.** Staffordshire group of a couple sitting under a tree, on oval base



- 215.** Edwardian inlaid mahogany corner wall cabinet with glazed door and shelving



- 216.** Continental style pier glass wall mirror with ornate serpent scroll and foliate decorated pediment



- 217.** Pair of cloisonne baluster shaped vases with ornate bird gilt and foliate decoration



- 218.** Pair of Oriental style baluster shaped flower vases of ribbed form with bird and foliate decoration



- 219.** Red ground vintage Persian Tabriz rug of bespoke medallion design and with Deer motifs



- 220.** Georgian walnut wall clock with turned tapering columns, shaped finials, herringbone inlay, enamel dial, with inlaid panels, by Ganter Bros Dublin



- 221.** Oriental bowl or plaque profusely decorated with serpents and foliage



- 222.** Ornate cloisonne holy water font and cross with ornate gilt and foliate decoration



- 223.** Staffordshire style figure of a hunter, on oval base



- 224.** Victorian Staffordshire style porcelain group "The Rival"



- 231.** Ornate green tinted oil lamp shade with ruffled rim



- 225.** Edwardian inlaid walnut work table with oval panel, frieze drawer with ornate scroll inlay and brass handles, material drawer under, on inlaid square tapering legs with shaped stretcher



- 232.** Victorian cranberry glass circular decanter with oval stopper, having ornate grapevine etched decoration



- 233.** Ivory ground cashmere rug with tree of life design size



- 226.** Pair of Irish cut glass baluster shaped decanters with spouts and strawberry panels



- 234.** Edwardian hexagonal shaped mahogany wall clock with circular dial



- 227.** Set of six Waterford Crystal cut glass port glasses with diamond decoration



- 235.** Regency design cheval mirror with reeded border and stretcher, on shaped legs



- 228.** Cork crystal paperweight of beehive design



- 236.** Ornate bronzed figure of a lady on marble base



- 229.** Cast iron Guinness advertising sign



- 237.** Round enamel Players Tobacco & Cigarettes advertising sign



- 230.** Edwardian inlaid mahogany press with frieze drawer, shelved press under, drawer under, on inlaid square tapering legs





- 238.** Vintage Coleman's Mustard advertising sign



- 245.** Large open bookcase with adjustable shelves



- 239.** Vintage enamel Afton Cigarettes advertising sign



- 246.** Large silverplated serving tray with shaped handles and scalloped borders



- 240.** Edwardian mahogany dome topped cheval mirror with turned tapering columns, and shaped legs



- 247.** London silver creamer with semi-ribbed body, shaped handle and square base



- 241.** Edwardian mahogany shelf unit with shaped tops



- 248.** Art Deco silverplated jet fighter shaped cigarette lighter on shaped stand



- 242.** Victorian mahogany bookcase with domed glazed doors, shelved interior, drawer with shaped front, press under with drawers and shelving, and panelled doors



- 249.** Silverplated and enamel cigarette or card case featuring a Spanish dancer



- 243.** Cast iron horseshoe shaped boot scraper with horse decoration



- 244.** Edwardian style marble topped cast iron patio or garden table with shaped base and legs

#### Paintings and Sculpture:

When the Forename(s) and Surname of the Artist are given, in our opinion this is a work of the Artist.

When the Initials of the Forename(s) and the Surname of the Artist are given, in our opinion this is a work of the period of the Artist which may be wholly or partly his work.

When the Surname only of the Artist is given, in our opinion this is a work by the school, or by one of the followers of the artist, or in his style and of uncertain date. Purchasers are allowed seven days from the date of the Auction to satisfy themselves as to the accuracy of the catalogue description. Please note the Conditions of Sale as displayed in the Auction Rooms.



**250.** AM Smith 'Head'  
artists proof  
68x70cm signed



**258.** Alan Stanton 'Little Missendon' water-colour 29x38cm signed



**251.** John Chancellor  
'Victory in pursuit of Nelson' limited edition print 50x75cm stamped



**259.** Julian Friers 'Irish Red grouse' Limited Edition 28x35cm signed and stamped



**252.** African School  
'Swan in a river by a hut' oil on canvas 45x60cm



**260.** Set of 3 Cork scenes by Henry Morgan, John 'The Bard' Fitzgerald and Robert Lowe Stopford, 22 x 32cm each



**253.** English school  
'Ducks by a stream' 18x23cm



**261.** Map of Old Cork 1579 'A glimpse of the past' 29x39cm



**254.** English School  
'Farmyard chickens' 18x23cm



**262.** English School 'The Hunt' 10x15cm



**255.** Players cigarette card collection framed 30 x 48cm



**263.** Irish School 'House by the wood' oil on board 30x21cm



**256.** English School 'Pair of Cries of London' prints 29 x 20cm each



**264.** Set of six 'Oriental fable scenes' lithographs 28x25cm each



**257.** Norman Yates - Five 'Shipping scenes' watercolours 18 x 24cm signed





- 265.** Continental School  
'Riverside street scene' oil on canvas  
60x90cm



- 266.** Prudence Turner  
'Deers by a mountain stream' oil on canvas  
50x75cm



- 267.** Gordon Wood Armstrong  
'Doone Valley, Exmoor' watercolour 34 x 45  
signed



- 268.** Rossinger 'Cherub' oil on canvas  
28x38cm signed



- 269.** George Edwards Marston  
'Wellington on the march' oil on board 27x42cm  
signed



- 270.** Aideen McNamara  
'Riverside Buildings' oil on canvas  
50x60cm signed



- 271.** A Gaymard 'The chess game' limited edition print  
20x27cm signed & stamped



- 272.** Italian School 'Gondoliers' print  
38x42cm



- 273.** Sue Jacobs, Pair of photographs -  
'Charles Fort, Kinsale & 'Garretstown' 28x18cm each



- 274.** Continental School  
'Street scene' watercolour 26x18cm



- 275.** Continental School  
'Algiers' palette knife on canvas  
50x70cm



- 276.** Nicola O'Donnell  
'1st green, Kileen Course, Killarney' oil on canvas  
29 x 39 signed



- 277.** Sean McCarthy 'Still life study' watercolour 31x24cm signed



- 278.** E Alexander 'A quiet morning' oil on canvas 60x50cm signed



- 279.** John Worsley 'Historic Moment - Australia II wins the Americas Cup' oil on canvas  
30x50cm



**280.** MA Bird 'Life study with food & a glass' oil on canvas 30x40cm signed



**287.** Irish School 'Grounded fishing boat by a beach' watercolour 23x32cm



**281.** Terence Attridge Williams 'Still life study of flowers in a bowl' oil on board 23x30cm monogrammed



**288.** John Brennan, 'Seas' Giclee print 133/250 12x17cm signed



**282.** Irish School 'Turk lake, Killarney' watercolour 24x34cm



**289.** Victorian Maritime School 'Tall ship crossing' oil on board 12x20cm



**283.** Joyce O'Reilly 'Cottages' oil on canvas 38x47cm signed



**290.** W H Bartlett, Set of five Irish scenes, prints 12x18cm each



**284.** Michael John Hill 'Sunset on a river' oil on canvas 62x73cm signed



**291.** Victorian School 'The music lesson' oil on canvas 60x45cm



**285.** J W Carey 'Winter sunset, Dhu lough' watercolour 26x37cm signed & dated



**292.** Victorian school 'Young girl dancing' 38 x 26cm



**286.** Mary B Spiers 'Dolphins playing' watercolour 32x52cm signed



**293.** EV Lucas 'Portrait of Augustus John' pencil & wash 21x17cm signed



**294.** Victorian school 'The letter' oil on canvas 90x70cm



- 295.** Edwardian School, Miniature 'Study of a Naval Ensign' watercolour 10x8cm



- 307.** A Jummell 'Woodland path' 35 x 42 signed



- 300.** Ethel Charmlers 'Still life study of flowers' oil on board 20x26cm signed



- 308.** Patrick Hennessy RHA 'Allegorical composition with head, 2 pianists and a hand in a desert setting' oil on canvas, 57 x 57 signed



- 301.** Christine Thery 'Lady with turf barrow' oil on canvas 50x100cm signed



- 309.** After Percy French 'Coastal path' watercolour 17x30cm



- 302.** Victorian school 'Figure on a path' oil on board 19x13cm



- 310.** Peader Drinan 'Colourful Abstract' oil on board 28x40cm



- 303.** Frank Shippides 'Return of the SS Great Britain' limited edition 25x37cm signed



- 311.** M. Flannery 'Still life study' watercolour 30x40cm signed



- 304.** Dutch school 'Riverside scenes with castles & figures' Pair of oils on boards 40x60cm each



- 312.** Mary Spiers 'Dover Castle' oil on board 42x98cm signed verso



- 305.** Carol Burnette 'French Street scenes' a pair of oils on canvas 60x50cm each signed



- 313.** William Harrington 'Nude study' 36x52cm signed



- 306.** Arthur Maderson 'All talk, Tallow Horse Fair' mixed media 37x38cm signed





**314.** Sepia photograph of the Cork Race-course, Marina, Cork 30x40cm



**315.** Gladys Maccabe RUA 'Clown with cat' oil on board 49x68cm signed



**316.** Irish School 'Coastal study with beach' oil on canvas 37x90cm



**317.** Irish School 'Woodland scene with ferns & river' oil on board 40x50cm signed indistinctly



**318.** Catherine Scofield 'Antrim Landscape' watercolour 20x36cm initialled



**319.** J Faulkner 'Riverside scene, Co Kerry' watercolour 17x25cm signed



**320.** Dutch School 'Boats on a river at sunset' 20x26cm



**321.** Sofie Renz 'Carnival' oil on board 30x20cm signed



**322.** Patrick Hennessy 'Killarney Lake' oil on board signed



**323.** Regency style triple bevelled glass over-mantle with foliate decoration



**324.** Michael Ayrton 'Study of a gentleman' pen & ink 30x22cm signed



**325.** Sir John Crampton 'Woodland scene' watercolour 8x11cm



**326.** Richard Bramley 'Western Ocean packet ship The Yorkshire' oil on canvas 50x75cm signed



**327.** Richard Bramley 'Battleships engagement' oil on canvas 50x75cm signed



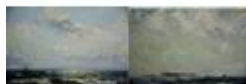
**328.** Richard Bramley 'Clipper under full sail' oil on canvas 50x75cm signed



- 329.** Tom Oldham 'Evening at the Butt & Oyster Pinmul' watercolour 30x50cm signed



- 336.** Frederick Grey 'Highland cattle' oil on canvas 50x75cm signed



- 330.** J Hughes Clayton 'Seascapes with yachts' a pair, oils on board 30x36cm & 32x40cm signed



- 337.** Stephans 'Gathering kelp on the beach' oil on canvas 39x80cm signed



- 331.** Gerry Dillon 'Errigal Mountain, Donegal' oil on board 18x22cm signed



- 338.** 'His Most Excellent Majesty George IV's visit to Dublin 1821' lithograph 40x59cm



- 332.** Victorian School 'Sailing ship off a quay in a storm' oil on board 32x47cm



- 339.** Tom Oldham 'Sailing ships unloading at a quayside' watercolour 29x45cm initialled



- 333.** Continental School 'Study of an exotic lady' oil on board 57x42cm



- 340.** Continental School 'The Bay of Naples, Italy' oil on canvas 59x118cm signed



- 334.** Maureen Conor 'Shawlie' pastels 34x23cm signed



- 341.** Tom Oldham 'Tower Bridge, London' watercolour 20x29cm signed



- 335.** Arthur Cox 'The morning Spanish Head' & 'Garwick Bay, Lacksey, Isle of Man' pair of oils on board 22x32cm each signed



- 342.** Harold J Bowyer 'Torbay' oil on board 32x42cm signed



- 343.** Irish School 'Arranmore, The Rosses, Co Donegal' oil on board 30x38cm



- 344.** Irish School 'Shawl-  
ie' oil on board  
114x55cm initialled  
TH, dated '65



- 345.** Glanville 'Riv-  
erscape with  
wooden bridge'  
69x74cm signed



- 346.** S Irwin 'Battle ship  
sea engagement' oil  
on canvas 50x60cm  
signed



- 347.** George Shaw 'Clip-  
per under full sail'  
oil on canvas  
60x90cm signed



- 348.** Red ground cash-  
mere rug of Sharbas  
medallion design



- 349.** Cream ground full  
pile fine woven flo-  
ral medallion pat-  
terned rug



- 350.** Set of eight Cork  
eleven bar inlaid  
mahogany dining  
chairs with reeded  
rails and bars, string  
and box inlay, foli-  
ate upholstery, on  
reeded square taper-  
ing legs with  
stretchers, including  
two carver arm-  
chairs



- 351.** Set of six Chippen-  
dale style mahogany  
dining chairs with  
pierced splats, drop-  
in seats, on square  
tapering legs with  
stretchers



- 352.** Set of six Queen  
Anne design walnut  
dining chairs with  
vase shaped splats,  
scroll decoration,  
upholstered seats, on  
carved cabriole legs  
with claw on ball  
feet



- 353.** Set of six Edwardian  
mahogany dining  
chairs with shaped  
rails, leather seats,  
on square tapering  
legs with stretchers



- 354.** Edwardian mahog-  
any seven piece  
drawing room suite  
with foliate carved  
pierced wheatsheaf  
splats, scroll and foli-  
ate carved top rails,  
serpentine fronted  
upholstered seats,  
and cabriole legs  
with castors





- 355.** Victorian mahogany hall chair with scroll decorated shield shaped back, serpentine fronted seat, turned tapering legs



- 356.** Victorian walnut high back nursing or side chair with spoon shaped back, upholstered back and seat, on cabriole legs with castors



- 357.** Pair of Georgian Chippendale mahogany occasional chairs with pierced wheatsheaf splats, foliate upholstered drop-in seats, on square legs with stretchers



- 358.** Victorian style corner open armchair with shaped splats and turned rails, serpentine fronted upholstered seat, on turned legs with stretchers



- 359.** William IV walnut nursing chair with turned rails, foliate upholstery, on turned legs with casters



- 360.** Victorian mahogany upholstered ladies chair with serpentine fronted seat, on baluster turned legs



- 361.** Queen Anne mahogany child's chair with vase shaped back, upholstered seat, on cabriole legs with pad feet and stretcher



- 362.** Set of four oak occasional chairs with carved rails, upholstered seats, on turned tapering legs



- 363.** Pair of Edwardian style painted folding garden or picnic seats with railed backs and seats, on X-shaped frames



- 364.** Victorian style upholstered stool with cushion, on scroll carved cabriole legs with claw on ball feet



- 365.** Pair of Victorian style cast iron garden benches with ornate branch decoration

## **SPECIAL AUCTION**



**Antiques, Fine Art, & collectables  
Contents from 'Saleens', Carrigaline, Co. Cork  
January 2021  
Outside entries now invited**

## **SPECIAL AUCTION**



**Antiques, Fine Art, & collectables  
'Millboro House', Lee Road, Cork  
February 2021 – see our website for details**

*Conditions of Sale:*

1. The highest bidder for each lot shall be the purchaser. Should a dispute arise the Auctioneer shall at his discretion put the lot in dispute up for sale again or withdraw same from sale or declare the purchaser thereof.

2. The Auctioneers reserve for themselves the right to bid on behalf of the vendors and to reject or refuse to accept any bid without giving any reason therefor. The bidding shall be regulated by the Auctioneers and no bidding shall be retracted.

3. The price at which the bidder purchases each lot will be exclusive of V.A.T. and premium.

4. If required by the Auctioneer, the purchaser of each lot shall give his name and address to the Auctioneers representative and shall also immediately pay a cash deposit of 25% of the purchase money (or such sum as the Auctioneer may stipulate). The balance of the purchase money together with V.A.T. (if applicable), Auctioneers commission at the rate of 23% of the full purchase price plus V.A.T. at the prevailing rate shall be paid on the day of the sale, and if not so paid the Auctioneers reserve the right to charge interest on any unpaid balance at the rate of 18% per annum until payment is made.

5. Each purchaser's sale account must be paid in full before the removal of any lot.

6. Purchasers will be required to pay either in cash, bankers draft or card

7. The Auctioneers reserve the right to alter, divide, group or withdraw any lots either before or at any time during the sale.

8. The vendors or their agent reserve to themselves the right of repurchasing any lot, or part lot, at the knocked down price, or proportion of such price, where it is found necessary to let that lot, or part lot, remain and the decision of the Auctioneers respecting same shall be final and binding on all parties.

9. Each purchaser shall be deemed to have inspected and to be thoroughly acquainted with the contents and conditions of the lot or lots purchased and to have purchased same subject to all faults, deficiencies, imperfections and errors (if any) of any description therein, and no allowance whatsoever shall be made in respect of any difficulty of access.

10. The description, measurements and numbers set out in the catalogue are believed to be correct but no guarantee or warranty is given or is to be implied as to the correctness of such descriptions, or the genuineness or authenticity of any lot or its fitness for any particular purpose.

11. Each lot shall, from the fall of the hammer, be at the sole risk of the purchaser and must be cleared and taken away, without fail, at the purchasers expense, in such order as the Auctioneers or their representative shall direct not later than 5.00 p.m. on the Wednesday following the sale, after which time any lot or lots remaining on the premises shall be liable for rent and expenses, storage and insurance charges, and will also be liable to be removed from the premises and left outside at the purchasers risk in all respects.

12. The purchaser will be responsible for all damage that it, its carriers, servants or agents may do to the property of any third (and in particular to the vendors premises) in removing the lot(s).

13. If within seven days after the sale the Auctioneers have received notice in writing from the purchaser that a lot is not as described in the catalogue and this notice can be substantiated with evidence, the burden of proof to be upon the purchasers, then the Auctioneers at their discretion may rescind the sale and return the purchase price.

14. No liability will be accepted by the vendors or the Auctioneers for personal injuries of any description and from whatsoever cause arising, sustained by any person whilst on the property of the vendors for the purpose of inspection, or during the sale, or whilst removing any lots, or on the premises in connection with the sale.

15. Each purchaser shall be responsible for and will release and indemnify the vendors, their servants and agents, from and against all liability in relation to each lot or lots sold or otherwise.

16. Each purchaser shall provide all vehicles, equipment and labour necessary for the removal of purchases.

17. If the purchaser shall make default in payment of his purchase money or neglect to comply with these conditions, or any of them, all money paid by him or his agent at the time of sale shall be forfeited to the vendors who shall be at liberty to re-sell the lot or lots at such time or times as they may think proper and without notice to the party or parties making default or neglecting to comply with these conditions, and in case of non-payment thereof the same shall be recoverable as and for liquidated damages. Any surplus arising on such re-sales shall belong solely to the vendors. This condition shall not prejudice the vendors or Auctioneers right to enforce the contract made at this present sale.

18. Neither the vendors or the Auctioneers will hold themselves responsible for any lots while on the premises. No lots may be collected outside the dates and hours set out nor will the Auctioneers transfer lots from one buyer to another.

19. The vendors, their servants or agents shall not be liable for any loss, damage or injury occasioned to any purchaser, the purchasers servants or agents, or to any person or any property which may be caused by any defects, imperfection or malfunction in any lot or lots or contamination caused by same.

20. If any dispute or difference arises concerning any lot or the interpretation of these conditions, the same shall be settled by the Auctioneers whose decision shall be final and binding on all parties concerned.





# WOODWARDS

ESTD.  
1883

**Successful sales since 1883**

**We're selling property.. Are you ?**

The house market is starting to pick up with an increase in activity in some sectors  
If you are contemplating selling, talk to us. We have been through many recessions and have the knowledge gained over 3 centuries and 5 generations of experience that you will not get elsewhere.

Or new website **www.HomeMatch**.ie is our database listing the detailed requirements of hundreds of potential buyers. If you are looking log in to [www.homematch.ie](http://www.homematch.ie) and let us know what you are looking for.

If you are selling, let us make a match with a potential buyer.

We are the First Irish auctioneers on the Internet and receive up to 6,000 visitors per month.  
Check us out at [WWW.WOODWARD.IE](http://WWW.WOODWARD.IE)

**Monthly Auctions of Antiques, Fine Art, Silver, Porcelain, and quality house contents**  
Held in our City Centre Auction Rooms in Cook Street and in Period Properties throughout Munster.

Free inspection and appraisal in our offices Monday - Friday.

### **The Full Service**

from start to finish includes:

Removal of saleable items to our auction rooms

Clearance and preparation of property including skips, garden, etc.

Marketing, advertising and internet,

Viewing and negotiation,

Sale, and monitoring of all stages up to contract and close.

**We are the longest established family firm of Auctioneers in Cork  
with a hard earned reputation for integrity and results.  
Call us for free advice on how to achieve the maximum price for your  
property**

**Successful sales since 1883**

**Joseph *WOODWARD* & Sons, Ltd.**

**26, Cook Street, Cork**

**[www.woodward.ie](http://www.woodward.ie)**