



WOODWARDS

ESTD.
1883

FOUNDED 1883 – 5 GENERATIONS OF SUCCESS

Antiques Auction

Antiques, Fine Art,

Collectables, etc.

Saturday February 29th at 11am



easy Live Auction.com

LIVE AUCTIONS

Joseph **WOODWARD** & Sons, Ltd.

Auction Rooms, 26, Cook Street, Cork.

€3

www.woodward.ie

JOSEPH WOODWARD & SONS LTD

Founded 1883



WOODWARDS

ESTD.
1883

135 years serving the people of Cork

Antiques, Fine Art, Silver & Collectables

Saturday February 29th 2020 at 11am

**On View: Preceding Saturday 12noon – 5pm, Sunday 2pm – 5pm,
Monday to Friday from 10am to 5pm**

Full details and bidding at www.woodward.ie

Live Bidding with



FORTHCOMING AUCTIONS:

SPECIAL AUCTION

ANTIQUES, FINE ART, & COLLECTABLES
FEATURING HOUSE CONTENTS FROM A PERIOD
WEST CORK RESIDENCE – MARCH 28TH
Entries Invited from March 9th to 13th

SPECIAL AUCTION

IRISH & ENGLISH **SILVER**
FEATURING AN EXECUTORS SALE
Spring 2020
Entries Now Invited

Paintings and Sculpture:

When the Forename(s) and Surname of the Artist are given, in our opinion this is a work of the Artist.

When the Initials of the Forename(s) and the Surname of the Artist are given, in our opinion this is a work of the period of the Artist which may be wholly or partly his work.

When the Surname only of the Artist is given, in our opinion this is a work by the school, or by one of the followers of the artist, or in his style and of uncertain date.

Purchasers are allowed seven days from the date of the Auction to satisfy themselves as to the accuracy of the catalogue description.

Please note the Conditions of Sale as displayed in the Auction Rooms.

Estimates given are our opinion at the time and are subject to revision.

Collection of Purchases:

All purchases can be collected from 2pm to 3pm on Saturday and 10am-5pm Monday and Tuesday

or be subject to a daily storage/insurance **charge** of €15 per day for furniture and €5 per day for other items.
Please note – no vehicular access to Cook Street from 11am – 5pm

Joseph *WOODWARD* & Sons, Ltd.

26, Cook Street, Cork

Tel: 021-427 3327 email: auctions@woodward.ie

A Family Business since 1883

www.woodward.ie



1. Edwardian brass framed beveled mirrored fireguard with shaped handle and legs



9. Ornate chess set with figured pieces in carrying case



2. Edwardian mahogany hexagonal shaped two tier occasional table with shaped legs, turned stretchers, on castors



10. Victorian four tier whatnot with bow fronted shelves and barleytwist columns



3. Assorted lot of old records in box



11. Edwardian inlaid mahogany oblong table with satinwood and abony string inlay, on turned tapering legs



12. Assorted lot of brassware, oblong tray, two circular plaques and a bellows



4. Victorian mahogany two tier bust or jardinière stand, on barleytwist columns with splayed legs



13. Edwardian inlaid yew canterbury with reeded borders



5. Victorian oak three tier dumbwaiter with ornate foliate carving, shaped back, frieze drawer, on turned legs



14. Victorian mahogany library steps with leatherette inset, lift up lids and drawers, on turned legs



6. Victorian oak Arts & Crafts occasional table with carved borders, on shaped feet



15. Victorian mahogany tea table with fold-over top, rounded corners, gateleg support, on turned tapering legs



7. Edwardian brass firescreen with maritime decoration



8. Victorian oak three tier cake stand with hexagonal tiers and barleytwist columns



16. Victorian walnut two tier circular occasional table with ornate rosewood and satinwood inlaid bands, and shaped turned legs



- 17.** Pair of brass candlesticks of baluster form with circular bases



- 18.** Pair of baluster shaped flower vases of bulbous reeded form



- 19.** Edwardian inlaid mahogany two-tier jardiniere stand with shaped legs



- 20.** Edwardian pedestal desk with leather top, eight pedestal drawers with ornate brass drop handles, on plinths



- 21.** Victorian occasional table with wavy border, baluster column on tripod



- 22.** Assorted lot of Victorian copper items: two kettles, a jug and pan



- 23.** Victorian Staffordshire style porcelain group "The Rival"



- 24.** Small statuette of an Irish Volunteer, 1916



- 25.** Edwardian design inlaid and crossbanded walnut provision cabinet with lift-up folding front having brass drop handles and escutcheons, door under, on bracket feet



- 26.** Victorian mahogany torchere or plant stand with square top and turned column



- 27.** Red ground Persian Mashad carpet with traditional design, 320 x 217cm



- 28.** Edwardian inlaid and crossbanded overmantle mirror with turned feet



- 29.** Pair of Louis XV style inlaid walnut commode chests with shaped marble tops, 2 drawers, ormolu mounts, on cabriole legs



- 30.** Edwardian inlaid mahogany display cabinet with herringbone and ribbon inlay, glazed doors, shelved interior, on cabriole legs



- 31.** Georgian mahogany circular occasional table with turned column, on carved tripod



- 32.** Pair of Edwardian style circular brass shell cases 30cm high



- 33.** Pair of Edwardian style brass candlesticks on stepped bases



- 39.** Victorian mahogany pembroke table with D-shaped dropped leaves, pull-out supports, on turned tapering legs



- 34.** William IV mahogany and walnut teapoy or work table with lift-up lid, sectioned interior, on hexagonal tapering column with collar, on concave plinth with bun feet



- 40.** Edwardian inlaid and crossbanded mahogany D-end dining table with reeded borders, on twin turned columns, on tripods with brass cap toes



- 41.** Red ground Persian Qashqai tribal rug of traditional design. 220 x 130cm



- 35.** Georgian mahogany longcase clock with scroll arch frieze, old enamelled face with foliate decoration and date aperture, the case with shell inlay, on bracket feet



- 42.** Ornate alabaster electric table lamp with Corinthian style column, on stepped base



- 43.** Ornate bronzed bankers lamp with butterfly decorated multi-coloured shade



- 36.** Ornate Victorian mahogany framed triple folding screen with ornate foliate decoration and shaped legs



- 44.** Edwardian yew nest of three tables with raised borders, turned columns, on bracket feet



- 37.** Two Aynsley style floral decorated porcelain electric lamps



- 38.** Unusual Victorian style leather bound mock rhinoceros bust



- 45.** Edwardian mahogany pedestal or knee-hole desk with five drawers, presses under with panelled doors, on plinths



- 46.** Edwardian mahogany pembroke table with dropped leaves, rounded corners, frieze drawer with circular handles, on tapering legs with brass castors



- 47.** 49 piece Fransiscan Staffordshire dinner service with foliate decoration



- 48.** Twelve piece gilt and floral decorated coffee service by James Kent Ltd Longton



- 49.** Edwardian inlaid mahogany nest of bowfronted tables with square tapering legs



- 50.** Edwardian hexagonal shaped occasional or centre table raised on ring-turned shaped legs with castors



- 51.** Edwardian inlaid mahogany rectangular two tier occasional table with shaped supports and square tapering legs



- 52.** Bronzed electric lamp decorated with horse and jockey, etc



- 53.** Pair of bronzed ornaments of hares on shaped marble bases



- 54.** Edwardian circular burr walnut occasional or coffee table with turned column and reeded splayed tripod with brass lionclaw feet



- 55.** Georgian mahogany bureau with fall-out front, pull-out supports, interior fitted with drawers and presses, 2 short and 2 long drawers under with oval brass drop handles, on bracket feet



- 56.** Edwardian mahogany occasional table with serpentine shaped borders, on cabriole legs with shaped stretchers



- 57.** Two old Irish cut glass glass decanters with paneled decoration



- 58.** Galway Crystal seven piece drinks set, decanter with stopper and six tumblers



- 59.** Cavan crystal circular raised flower bowl with wavy rim, hexagonal stem with circular base



- 60.** Oval Edwardian inlaid mahogany centre table with tip-up top, on quadruple columns, on swardapod



- 61.** Bronzed bull ornament on marble base



- 62.** Ornate bronzed ornament of a boy with turtles on hexagonal base



- 63.** Ornate Regency style gilt framed overmantle mirror with ornate scroll and foliate decoration



- 64.** Circular brass compass stamped 'Stanley London' in case



- 65.** Pair of Edwardian mahogany demi lune console tables on vase turned columns on tripods



- 66.** Victorian mahogany teapoy with hexagonal shaped top, fitted interior, on baluster turned column with shell collar, on concave plinth with bun feet



- 67.** Edwardian style bronzed standard lamp with circular base and multi-coloured shade



- 68.** A statue of two dancers on oval base



- 69.** William IV mahogany occasional or sewing table with dropped leaves, pull-out supports, frieze drawer with brass handle, bowed material drawer under, raised on baluster turned column with reeded collar, on concave plinth with upturned cup feet



- 70.** Georgian mahogany breakfast or library table with tip-up top, raised on turned shaped column, on splayed quadrapod with pad feet



- 71.** Edwardian mahogany tea table with fold-over top, pull-out gateleg support, on square tapering legs



- 72.** Victorian style baluster shaped flower vase with ornate figured panels and foliate decoration



- 73.** Dutch style baluster shaped ewer with ornate blue and white scenic decoration



- 74.** Red and Blue ground Persian Sarouk carpet with floral design, 376 x 290cm



- 75.** Regency style domed console or wall mirror with beveled mirror, ornate scroll, shell and foliate decoration, 200 x 100cm



- 76.** Edwardian inlaid and crossbanded mahogany envelope card table with swivel top, fold-out diamonds, baize playing surface, frieze drawer with brass drop handles, on inlaid tapering legs with applied collars



- 77.** Edwardian design brass mariner's sextant in fitted case



- 78.** Mariners brass telescopic telescope on folding stand



- 79.** Regency style pier long wall mirror with reeded and ball decoration



- 80.** William IV inlaid and crossbanded rosewood card table with swivel fold-over top, baize playing surface, rounded corners, on U-shaped support, on inlaid quadrapod with brass lionclaw feet



- 81.** Victorian circular rosewood two tier occasional table with capstan inlay on turned tapering legs with concave shelf



- 83.** Oriental bronzed figure of a seated monk praying



- 84.** Ornate bronzed figure of chuchulan with wolfhound on oval base



- 85.** Georgian mahogany library table with rounded borders, tip-up top, on turned shaped column, on quadrapod with castors



- 86.** Victorian walnut card table with swivel fold-over top, baize cover, rounded borders, on cabriole legs with pad feet, stamped 'Shaw of London'



- 87.** Victorian style copper table oil lamp with glass shade and circular base



- 94.** Victorian oblong foot stool with foliate needlework, on turned tapering legs



- 88.** Georgian copper kettle with shaped brass handle



- 89.** Georgian copper teapot with shaped swivel handle



- 95.** Regency crossbanded mahogany and rosewood card table with swivel fold-over top, baize playing surface, inlaid frieze, on turned column on concave plinth with foliate and reeded quadrapod with brass cap toes, on casters



- 90.** Louis XV style console table with serpentine marble top, ornate scroll and foliate decorated base with scroll feet and stretcher



- 96.** Victorian walnut occasional or writing table with circular top, wavy border, desk with shaped lid, on bamboo turned legs



- 91.** Biedermeier inlaid hall or side table with two frieze drawers, circular handles, on cabriole legs



- 97.** Victorian brass table oil lamp with white glass shaped shade



- 92.** Ornate Regency style bevelled glass wall mirror with foliate decoration



- 98.** Set of four circular brass candlesticks with stepped bases



- 93.** Edwardian style brass 8-branch hanging light with S-shaped arms and round sconces



- 99.** Edwardian mahogany adjustable square 2-tier dumbwaiter with shaped borders, serpentine base and scroll feet



- 100.** Louis XV style walnut and kingwood marquetry bureau with pierced brass gallery, marble top, 3 top drawers with brass drop handles, tambour drop down cylinder front enclosing a fitted interior with drawers, shelves and pull-out writing slope, lower drawer with brass drop handles, on inlaid tapering legs



- 101.** Georgian style mahogany davenport with slide out top, lift-up lid, with fitted interior, two pull-out shelves with drawers under having ornate brass drop handles, on turned cup feet



- 102.** Waterford Crystal cut glass domed mantle clock with circular brass framed dial, on stand



- 103.** Waterford crystal circular fruit or flower bowl with wavy rim, diamond decoration, on circular base



- 104.** Victorian inlaid and crossbanded satinwood two tier occasional table or stand with frieze drawer, circular handle, square tapering legs, by Maple & Co Ltd



- 105.** Regency rosewood tea table with swivel fold-over top, rounded borders, scroll decorated frieze, on turned tapering column with foliate collar, on concave plinth with scroll feet and casters



- 106.** Edwardian walnut work or sewing table with turned rails, presses with lift-up tops, on square tapering legs with castors



- 107.** Edwardian style umbrella or stick stand decorated with figure of a dog and tree with bow fronted base



- 108.** Pair of cast iron skillet pots with shaped handles and three legs each



- 109.** Red ground full pile Persian Sarouk rug of traditional design, 286 x 203cm



- 110.** Pair of Edwardian inlaid and crossbanded mahogany demi lune hall or side tables with reeded inlaid friezes, on square tapering legs with spade feet



- 111.** Victorian Arts and crafts occasional table with ornate carved top, circular column with collar on concave plinth



- 112.** Oval gilt framed wall mirror with stepped border



- 113.** Regency rosewood wheel barometer with thermometer and brass framed circular dial



- 114.** Victorian mahogany davenport with stationary well and lift-up lid, leather inset, fitted interior, four side drawers with circular handles, cabriole columns, on circular feet with castors



- 115.** Georgian inlaid walnut chest of four drawers of graduating sizes, with oval brass drop handles and escutcheons, on bracket feet



- 116.** Vintage cast iron pump with reeded decoration and shaped handle



- 117.** Ornate cast iron bird bath with shell shaped top and shaped base



- 118.** Regency style bevelled glass wall mirror in double gilt frame



- 119.** Cast iron garden or patio table with foliate decoration



- 120.** Edwardian inlaid and crossbanded walnut and mahogany sofa table with drop leaves, pull-out supports, 2 frieze drawers with brass drop handles, on lyre columns with shaped stretcher, and bracket feet



- 121.** Victorian mahogany occasional table with tip-up top, shaped borders, on turned column on hipped tripod



- 122.** Edwardian inlaid walnut tea caddy with lift-up lid and sectioned interior



123. Edwardian style brass sextant in fitted case



130. Edwardian oak kneehole desk with seven drawers, brass drop handles, lift-up lid, on square tapering legs with castors



124. Unusual Victorian mahogany pipe smokers table with tobacco mixing vases, foliate decoration, on shaped tripod



131. Edwardian style cast iron six branch plant stand with scroll decoration and circular base



125. Edwardian inlaid walnut oval centre table with tip-up top, on quadruple columns, on splayed quadrapod



132. Waterford Crystal cut glass fruit or flower bowl with serrated wavy rim and diamond decoration



126. Edwardian inlaid and crossbanded satinwood demi lune hall or side table with ebony inlay, bowed frieze, on square tapering legs with spade feet



133. Waterford Crystal cut glass ships decanter with diamond decoration and stopper



127. Thirty-five piece Victorian style dinner service with ornate foliate decoration



134. Waterford Crystal cut glass candlestick of tall baluster form with hexagonal base



128. Ornate cast iron figure of a cherub



135. George II mahogany Pembroke table with D-shaped drop leaves, pull-out gateleg support, on cabriole legs with pad feet



129. Ivory Ground Kashmir rug with all over floral design, 180 x 120cm



- 136.** William IV inlaid walnut games table with chess board inlaid swivel fold-over top, with baize surface, drawer under, brass drop handle, turned legs with concave stretcher and tapering feet



- 137.** Oriental porcelain figure of a monk holding a vase with ornate gilt and foliate decoration and shaped base



- 138.** Set of three Oriental porcelain figures with ornate blue and white foliate and serpentine decoration



- 139.** Victorian style baluster shaped flower bud vase with ornate gilt foliate decoration



- 140.** Georgian mahogany and walnut longcase clock with scroll arch frieze, the dial with phases of the moon, and date aperture, seconds dial, and decorated with buildings, the case with reeded sides and bracket feet



- 141.** Red Ground Persian Mashad rug with floral medallion design, 373 x 275cm



- 142.** Waterford Crystal cut glass electric lamp with baluster shaped chimney and circular bowl, diamond decoration and circular base



- 143.** Waterford Crystal cut glass flower vase of circular tapering form with waisted neck



- 144.** Ornate Regency style bevelled glass wall mirror with double frame and ornate scroll and foliate decoration



- 145.** Georgian inlaid walnut and mahogany chest of three drawers with brass drop handles, ornate pierced back plates and escutcheons, on bracket feet



- 146.** Pair of stone garden statues of whippets on shaped bases



- 147.** Ornate cast iron birdbath with shell decorated bowl and pierced base



- 148.** Cast statuette 'Spirit of Ecstasy' on circular marble base



- 149.** Pair of ornate horse shaped bookends on oval bases



- 150.** Edwardian mahogany bureau bookcase with astragal glazed doors, shelved interior, fall-out front with fitted interior and leather slope, four drawers under with brass drop handles, on bracket feet



- 151.** Georgian copper and brass fuel bucket with scroll decoration and handle



- 152.** Ornate brass companion set with ball shaped tops and oblong base



- 153.** Helmet shaped coal scuttle with shaped handle and circular base



- 154.** Regency rosewood wheel barometer with thermometer and brass framed circular dial



- 155.** Edwardian inlaid mahogany sofa table with dropped leaves, pull-out supports, reeded borders, two frieze drawers with brass drop handles, lyre shaped supports, on splayed legs with lionclaw feet



- 156.** Edwardian mahogany card table with fold-over top, on square tapering legs



- 157.** Set of six Waterford Crystal wine glasses with diamond decoration and knop stems



- 158.** Pair of Waterford Crystal tall stemmed wine glasses with panelled decoration by John Rocha



- 159.** Waterford Crystal flower vase with waisted neck and diamond decoration



- 160.** Victorian mahogany hall or side table with tray back, wavy borders, shaped frieze, on turned tapering legs



- 161.** Oriental four-fold dressing screen with ornate figured foliate and scenic decoration



- 162.** Tiffany design electric table lamp with multi-coloured shaped shade and baluster body



- 163.** Circular Imari bowl with scalloped rim, burnt ochre and deep blue decoration



- 164.** Circular Imari plate or plaque with foliate decorated panels and scalloped border



- 165.** Edwardian inlaid mahogany card table with swivel fold-over top, baize playing surface, on inlaid square tapering legs with brass castors



- 166.** Red and blue ground Persian Kashan rug with all over pattern, 280 x 170cm



- 167.** Set of six Waterford Crystal white wine glasses with faceted decoration and knob stems



- 168.** Waterford Crystal candle holder of bulbous form and circular base



- 169.** Waterford Crystal cream ewer and sugar bowl with diamond decoration



- 170.** Georgian walnut Pembroke table with drop leaves, pull-out gateleg supports, tapering legs with bracket feet



- 171.** Victorian style bevelled glass wall mirror in ornate scroll and foliate carved frame



- 172.** Ornate flute converted to electric table lamp on circular base



- 173.** Carved oriental figure of a monk on scroll decorated base



- 174.** Mariner's compass stamped J H Steward Ltd London in presentation case



- 175.** Georgian mahogany chest of two short and three long drawers with circular handles, on bracket feet



- 176.** Geo II demi lune mahogany card table with fold-over top, gateleg support, counter wells, on cabriole legs with pad feet



- 177.** Waterford Crystal cut glass decanter with faceted neck, diamond decoration and stopper



- 178.** Set of six Waterford Crystal port glasses with diamond decoration and knob stems



- 179.** Small Waterford Crystal bowl or ashtray with faceted decoration



- 180.** Georgian mahogany tea table with fold-over top, pull-out gateleg support, reeded borders, on square legs



- 181.** Cast iron wall plaque with Harp symbol and 'EIRE' under



- 182.** Edwardian brass fire fender with foliate decoration



- 183.** Mariner's brass folding compass in presentation case



- 184.** Art Deco style bronzed table lamp with multi-coloured shade



- 185.** Georgian mahogany longcase clock with domed top, circular enamel dial with date aperture and seconds dial by Sterling Limerick, mahogany case on plinth



- 186.** Edwardian inlaid oval walnut occasional or centre table raised on quadruple turned columns, on carved quadrapod



- 187.** Aboriginal shield with polychrome decoration



- 189.** Vintage oak churn of circular tapering form with metal banding



- 190.** Victorian mahogany three tier dumbwaiter with tray back, baluster turned columns, on bun feet



- 191.** Edwardian inlaid mahogany bookcase or cabinet with floral inlay and shelved interior



- 192.** Ornate bankers brass table lamp with green tinted shade



- 193.** Ornate bronze Art Deco style electric table lamp with multi-coloured shade



- 194.** Art deco style 3 branch hanging light with multi coloured shades



- 195.** Edwardian mahogany leaf cupboard with shelved front and fretwork sides



- 196.** Georgian mahogany bow fronted wall corner cabinet with pierced escutcheons and shelved interior



- 197.** Set of six Waterford Crystal stemmed wine glasses with diamond decoration by John Rocha



- 198.** Set of six Waterford Crystal shot glasses of circular tapering form



- 199.** Small Waterford Crystal creamer and sugar bowl with diamond decoration



- 200.** Victorian mahogany crossbanded pembroke table with drop leaves, rounded borders, pull-out supports, circular brass drop handles, on baluster column, on hipped reeded quadrapod with brass cap feet



- 201.** Handmade timber model of a fishing trawler on stand



- 202.** Ornate model ships telegraph with circular dials and handles on circular timber base



- 203.** Mariners hand held compass stamped Stanley, London



- 204.** Walnut framed wall mirror with foliate decoration



- 205.** Edwardian inlaid and crossbanded mahogany bureau bookcase with astragal glazed doors, shelved interior, bureau with fall-out front, 4 drawers under with drop handles, on bracket feet



- 206.** Oriental carved statue of a monk on shaped base



- 207.** French style ormolu mounted tall cranberry glass ewer with shaped handle, foliate encrustation and rococo decoration



- 208.** Ornate automaton clock with birds and globe



- 209.** Set of six Waterford Crystal cut glass liqueur glasses with diamond decoration



- 210.** Georgian mahogany corner wall press with bowed doors and shelved interior



- 211.** Mounted stag's head on shield shaped back plate



- 212.** Victorian copper bed warmer with turned handle



- 213.** Bronzed figure of a warrior on shaped base



- 214.** Horseshoe shaped cast iron boot scraper



- 215.** Pair of Georgian mahogany demi-lune hall or side tables with reeded friezes, applied panels, on square reeded tapering legs



- 216.** Biedermeier inlaid corner display cabinet with glazed door, shelved interior, on square tapering legs



- 217.** Art deco style domed triple folding screen with multi-coloured panels



- 218.** Framed collection of butterflies



- 219.** Art Deco resin sculpture of spiral form on raised base



- 220.** Regency rosewood work or sewing table with lift-up top, with serpentine borders and ornate satinwood and mother of pearl inlay, sectioned lift-out interior with fitted mirror, pull-out material drawer under, having string and foliate decoration



- 221.** Georgian mahogany oval footstool with cabriole legs



- 235.** Circular silver dish with double beaded border, on hoof feet. 476g



- 228.** Ornate silverplated baluster shaped teapot with shaped handle and spout



- 236.** Rose gold chain with lock 29.4g



- 229.** Walking stick with shaped silver plated handle



- 237.** Two gold chains and a ring



- 230.** Silverplated cake servers with shaped handles in case



- 238.** Rotary watch with chain



- 231.** Sheffield silver spoons & tongs in presentation case



- 239.** The Southern Star Centenary Supplement 1889-1989



- 232.** 6 Sheffield silver coffee spoons with shell decorated handles in case



- 240.** Pair of framed boat plans by Day & Sons, London 50x70cm each



- 233.** Boat shaped silver plated sauceboat with beaded decoration.



- 241.** Bert Wright 'Low Tide' watercolour 54x73cm signed



- 234.** Set of six London silver teaspoons in presentation case



- 242.** L Dick 'Donkeys and ducks' watercolour 23x34cm signed



- 243.** Eileen Healy 'Seated man' pastels 116x65 signed



- 251.** English school 'Rocky shore' oil on board 70x50cm, initialled PAE



- 244.** Jack Moss 'Cat' oil on board 50x40cm signed



- 252.** John Whale 'Eclipse' oil on board 18x24cm signed



- 245.** Marian Meakin 'Scotties' pastels oval 30x37cm signed



- 253.** Irish school 'Trawlers' oil on board 16x26cm



- 246.** Shirley Jones 'Studies of boats' pair of watercolours 30x24cm each signed



- 254.** George Deakins 'On the road to Donegal' oil on board 29x39cm signed



- 247.** Irish school 'Church ceiling' oil on board 86x63cm signed



- 255.** Peg Quinlan 'Old Head of Kinsale' oil on board 23 x 34 Signed and dated



- 248.** Lynton Palmer-Helmsley 'Boats ashore' oil on board 44x59cm signed verso



- 256.** K G Hand 'Gleneagle' watercolour 33x37cm signed



- 249.** Timber 3D model of a tall ship in frame 55x70cm



- 257.** John Whale 'Under sail' watercolour 20x25cm signed



- 250.** Gladys Leech 'The Savoy Cinema' 42x60cm signed



- 258.** Irish school 'Study of a boy' oil on board 19x15cm signed



- 259.** Barbara Barrett
'Fuschia' watercolour
25x35cm signed



- 267.** Peg O'Connor -
'Reflections' 25 x 20cm
oil on board signed



- 260.** Jules Suchard
'Riverside scenes' Pair
of watercolours
22x28cm each,



- 268.** Continental School
'Stacking the Hay' oil
on canvas, 50 x 75cm



- 261.** Pauline Bewick RHA
'The Irish Salmon'
Limited Edition
255/350 60x43cm
signed



- 269.** A Joyce O'Reilly
'Cottages' oil on canvas
38x47cm signed



- 262.** Pauline Bewick RHA
'The Irish Dolphin'
Limited Edition
255/350 60 x 43cm
signed



- 270.** Therese Van
Caenegem 'Barriere a
Regneville'
watercolour 25x37cm
signed



- 263.** Pauline Bewick 'The
Irish Elk' Limited
Edition 255/350 60 x
43cm signed



- 271.** Bryce 'Lough Bofin,
Connemara' oil on
board 24x34cm signed



- 264.** Pauline Bewick RHA
'The Irish Wolfhound'
Limited Edition
255/350 60 x 43cm
signed



- 272.** Henry G Hayes 'Snowy
country scene' oil on
canvas 50x70cm
signed & dated 1871



- 265.** Pauline Bewick 'The
Irish Hare' Limited
Edition 255/350 60 x
43cm signed



- 273.** Berry 'Young Colleen'
Gouache 24x18cm
signed verso



- 266.** Ellio Vitali 'Rose'
pastels 24x18cm
signed verso



- 274.** English school
'Farmyard scene' oil on
board 34x29cm



275. John Tomlinson
'Landscape' oil on
board 30x40cm signed



283. After Theodore
Rousseau 'The path to
the Village - Vendee'
oil on canvas 18x29cm
Initialled



276. Jules Surchard 'Old
Nuremberg'
watercolour 21x34cm



284. T Cougill 'Infinity'
pastels 23 x 23cm
signed



277. S Williams 'Shepherd
resting' oil on canvas
60x90cm signed



285. Genesis framed
sculpture 'Autumn'
14x14cm signed



278. Victorian school
'Portrait of a
gentleman' oil on
canvas 90x70cm



286. Liam 'Oriental scene'
pastels 38x48 signed



279. Arthur Maderson 'A
waft of arrogance'
palette knife on board
102x77cm signed
('Gentleman walking'
verso)



287. Ortelius Map,
'Hiberniae Brittannicae
Insulae Nova
Descriptio', 38x52cm



280. Bill Tidy cartoon 'its a
trap' acrylic
160x115cm signed



288. T Barker of Bath 'The
watering place' oil on
canvas 28x41cm detail
verso



281. Catherine Schofield
'Antrim Landscape'
watercolour 20x36cm
initialled



289. Continental school
'Street scene'
watercolour 26x18cm



282. P O'Connor 'Acoose
lake, Glencar, Kerry'
oil on board 18x31cm
signed



290. After Seargent 'Figures
on a beach' oil on
board 50x60cm



- 291.** John Speede 'The Province of Mounster' 40x52cm



- 299.** Dutch school 'Fishing smacks at Evening' oil on board, 34x45cm monogrammed



- 292.** 17 Century drawing 'After the crucifixion' 28x22cm



- 300.** After Sir John Lavery RHA 'Saint Johns Monastery' oil on board 12x20cm signed



- 293.** Alfred Elmore RA 1815 -1881 'Scene from Faust' watercolour with pencil 18x14cm



- 301.** Paul McCaughan 'Caoimhe' and 'McCrorys cottage' oils on board, 13x18cm each signed



- 294.** William Harrington 'Nude' limited edition 104/125 36x52cm signed



- 302.** Declan O'Connor 'Moore Street' oil on canvas 60x50cm signed



- 295.** Mark O'Neill 'At the door' oil on board 42x48cm signed



- 303.** G Thompson 'Extensive landscape with figures by a waterfall' oil on board 50 x 73cm signed



- 296.** Ray Kelleher 'Landscape' oil on board 30x40cm signed



- 304.** R Foster 'Beachside scenes' pair of oils on canvas 23x30cm each signed



- 297.** Cormac O'Connor 'Belvelly Bridge' watercolour 35x48cm signed



- 305.** Irish school 'River with figures and castle beyond' oil on canvas 52x75cm



- 298.** William Harrington 'River Lane' pencil and wash 51x38cm signed and dated



- 306.** Irish School 'Riverside scene' 50 x 75cm, oil on canvas



307. Jules Thomas 'Boats offshore, Schull, Co. Cork' 45 x 35cm signed



315. A Joyce O'Reilly 'Landscape' oil on canvas 40x50cm signed



308. William Crozier 'Night' Limited Edition lithograph 23/75 18x20cm signed



316. Irish school 'Drops' oil on canvas 39x34cm signed



309. Irish School 'Floral Garden and Gazebo' watercolour 40 x 30cm initialled



317. James Butler 'Landscape' oil on board 44x67cm signed



310. Mark Hathaway 'Baby Remora' watercolour 24x27cm signed



318. Jacqueline Mitchell 'In Blue' tryptich oil on canvas, 32 x 32 x 3 signed



311. L Mariss 'River scene' oil on canvas 48x70cm signed



319. Mary Clint 'Signs of the times' oil on board 49x36cm signed



312. S Robinson 'Landscape' oil on board 40x50cm signed



320. Irish school 'Dynamic Equilibrium' oil on board 55x40cm



313. Marja Van Kampen 'Still Life' watercolour 38x30cm signed



321. Paul Kerr 'Hands' oil on canvas 61x46cm signed



314. N Whitfield 'Farm scene' oil on board 48x72cm signed



322. Declan Marry 'Spring time, Gougane Barra' oil on board, 50x50cm signed



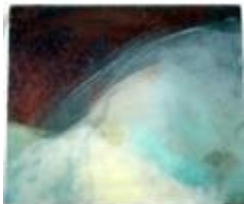
- 323.** D Najar 'Tree'
lithograph 70x45cm
signed



- 324.** Mary Clint 'Bar scene'
oil on board 60x60cm
signed



- 325.** Conor 'Concentric circles' mixed media
on canvas 50x50cm
signed



- 326.** Diane Peters Flanagan
'Mountains' oil on
canvas 33x38cm
signed verso



- 327.** Michelle M
'Streetscape' oil on
canvas 30x56cm
signed



- 328.** Irish school 'St Peter &
Pauls' batik 108x62cm



- 329.** Le Petit Journal, pair of
double framed pages,
30 x 40cm each



- 330.** Set of 8 Regency style
mahogany dining
chairs with reeded
bowed rails and sides,
upholstered seats, on
turned tapering legs



- 331.** Set of six Hepplewhite
style mahogany dining
chairs with pierced
wheatsheaf splats,
domed tops, drop-in
seats, on square
tapering legs



- 332.** Set of 4 Regency
mahogany dining
chairs with shaped and
scroll rails, on reeded
sabre legs, inc carver
armchair



- 333.** Edwardian inlaid
mahogany piano stool
with upholstered seat,
shaped inlay arms,
foliate inlay, on
cabriole legs



- 334.** Pair of Edwardian
Chippendale style
occasional chairs with
foliate carved pierced
splats, scroll
decoration, serpentine
fronted upholstered
seats, on cabriole legs



- 335.** Charles and Ray
Eames style mahogany
and leather lounge
chair and ottoman with
swivel bases



- 336.** Ladies Victorian mahogany framed chair with spoon shaped back, upholstered seat, on carved cabriole legs



- 337.** Victorian mahogany framed ladies chair with buttoned and foliate upholstery on cabriole legs



- 338.** Victorian ladies mahogany framed chair with serpentine fronted seat on turned legs



- 339.** Five piece cast iron garden or patio suite comprising circular table and four open armchairs with ornate honeycomb and rose decoration, on shaped legs



- 340.** Set of four Edwardian occasional chairs with railed backs and tapering legs



- 342.** Three piece cast iron garden or patio suite comprising circular table and two seats with ornate foliate figured decoration



- 343.** Coalbrookdale style cast iron garden bench with ivy decoration



- 344.** Pair of ornate cast iron garden benches with domed backs, ornate foliate decoration, on scroll feet, stamped Pierce Wexford



- 345.** Pair of Victorian style cast iron garden benches with ornate branch decoration



- 346.** Ornate cast iron garden seat with shaped domed back with serpentine fronted seat, on shaped legs

Paintings and Sculpture:

When the Forename(s) and Surname of the Artist are given, in our opinion this is a work of the Artist.

When the Initials of the Forename(s) and the Surname of the Artist are given, in our opinion this is a work of the period of the Artist which may be wholly or partly his work.

When the Surname only of the Artist is given, in our opinion this is a work by the school, or by one of the followers of the artist, or in his style and of uncertain date.

Purchasers are allowed seven days from the date of the Auction to satisfy themselves as to the accuracy of the catalogue description.

Please note the Conditions of Sale as displayed in the Auction Rooms.

Collections: All purchases to be collected by 5pm on the Friday after the auction, or be subject to a Storage/insurance charge of €5 per day for small items and €15 per day for larger items

Conditions of Sale:

1. The highest bidder for each lot shall be the purchaser. Should a dispute arise the Auctioneer shall at his discretion put the lot in dispute up for sale again or withdraw same from sale or declare the purchaser thereof.

2. The Auctioneers reserve for themselves the right to bid on behalf of the vendors and to reject or refuse to accept any bid without giving any reason therefor. The bidding shall be regulated by the Auctioneers and no bidding shall be retracted.

3. The price at which the bidder purchases each lot will be exclusive of V.A.T. and premium.

4. If required by the Auctioneer, the purchaser of each lot shall give his name and address to the Auctioneers representative and shall also immediately pay a cash deposit of 25% of the purchase money (or such sum as the Auctioneer may stipulate). The balance of the purchase money together with V.A.T. (if applicable), Auctioneers commission at the rate of 23% of the full purchase price plus V.A.T. at the prevailing rate shall be paid on the day of the sale, and if not so paid the Auctioneers reserve the right to charge interest on any unpaid balance at the rate of 18% per annum until payment is made.

5. Each purchaser's sale account must be paid in full before the removal of any lot.

6. Purchasers will be required to pay either in cash or by bankers draft. There is a service charge of 2% for credit cards.

7. The Auctioneers reserve the right to alter, divide, group or withdraw any lots either before or at any time during the sale.

8. The vendors or their agent reserve to themselves the right of repurchasing any lot, or part lot, at the knocked down price, or proportion of such price, where it is found necessary to let that lot, or part lot, remain and the decision of the Auctioneers respecting same shall be final and binding on all parties.

9. Each purchaser shall be deemed to have inspected and to be thoroughly acquainted with the contents and conditions of the lot or lots purchased and to have purchased same subject to all faults, deficiencies, imperfections and errors (if any) of any description therein, and no allowance whatsoever shall be made in respect of any difficulty of access.

10. The description, measurements and numbers set out in the catalogue are believed to be correct but no guarantee or warranty is given or is to be implied as to the correctness of such descriptions, or the genuineness or authenticity of any lot or its fitness for any particular purpose.

11. Each lot shall, from the fall of the hammer, be at the sole risk of the purchaser and must be cleared and taken away, without fail, at the purchasers expense, in such order as the Auctioneers or their representative shall direct not later than 5.00 p.m. on the Friday following the sale, after which time any lot or lots remaining on the premises shall be liable for rent and expenses, storage

and insurance charges, and will also be liable to be removed from the premises and left outside at the purchasers risk in all respects.

12. The purchaser will be responsible for all damage that it, its carriers, servants or agents may do to the property of any third (and in particular to the vendors premises) in removing the lot(s).

13. If within seven days after the sale the Auctioneers have received notice in writing from the purchaser that a lot is not as described in the catalogue and this notice can be substantiated with evidence, the burden of proof to be upon the purchasers, then the Auctioneers at their discretion may rescind the sale and return the purchase price.

14. No liability will be accepted by the vendors or the Auctioneers for personal injuries of any description and from whatsoever cause arising, sustained by any person whilst on the property of the vendors for the purpose of inspection, or during the sale, or whilst removing any lots, or on the premises in connection with the sale.

15. Each purchaser shall be responsible for and will release and indemnify the vendors, their servants and agents, from and against all liability in relation to each lot or lots sold or otherwise.

16. Each purchaser shall provide all vehicles, equipment and labour necessary for the removal of purchases.

17. If the purchaser shall make default in payment of his purchase money or neglect to comply with these conditions, or any of them, all money paid by him or his agent at the time of sale shall be forfeited to the vendors who shall be at liberty to re-sell the lot or lots at such time or times as they may think proper and without notice to the party or parties making default or neglecting to comply with these conditions, and in case of non-payment thereof the same shall be recoverable as and for liquidated damages. Any surplus arising on such re-sales shall belong solely to the vendors. This condition shall not prejudice the vendors or Auctioneers right to enforce the contract made at this present sale.

18. Neither the vendors or the Auctioneers will hold themselves responsible for any lots while on the premises. No lots may be collected outside the dates and hours set out nor will the Auctioneers transfer lots from one buyer to another.

19. The vendors, their servants or agents shall not be liable for any loss, damage or injury occasioned to any purchaser, the purchasers servants or agents, or to any person or any property which may be caused by any defects, imperfection or malfunction in any lot or lots or contamination caused by same.

20. If any dispute or difference arises concerning any lot or the interpretation of these conditions, the same shall be settled by the Auctioneers whose decision shall be final and binding on all parties concerned.



WOODWARDS

ESTD.
1883

Successful sales since 1883

We're selling property.. Are you ?

The house market is starting to pick up with an increase in activity in some sectors

If you are contemplating selling, talk to us. We have been through many recessions and have the knowledge gained over 3 centuries and 5 generations of experience that you will not get elsewhere.

Or new website **www.HomeMatch**.ie is our database listing the detailed requirements of hundreds of potential buyers. If you are looking log in to www.homematch.ie and let us know what you are looking for.

If you are selling, let us make a match with a potential buyer.

We are the First Irish auctioneers on the Internet and receive up to 6,000 visitors per month.

Check us out at WWW.WOODWARD.IE

Monthly Auctions of Antiques, Fine Art, Silver, Porcelain, and quality house contents

Held in our City Centre Auction Rooms in Cook Street and in Period Properties throughout Munster.

Free inspection and appraisal in our offices Monday - Friday.

The Full Service

from start to finish includes:

Removal of saleable items to our auction rooms

Clearance and preparation of property including skips, garden, etc.

Marketing, advertising and internet,

Viewing and negotiation,

Sale, and monitoring of all stages up to contract and close.

**We are the longest established family firm of Auctioneers in Cork
with a hard earned reputation for integrity and results.
Call us for free advice on how to achieve the maximum price for your
property**

Successful sales since 1883

Joseph *WOODWARD* & Sons, Ltd.

26, Cook Street, Cork

www.woodward.ie