



# WOODWARDS

ESTD.  
1883

FOUNDED 1883 – 5 GENERATIONS OF SUCCESS

# Antiques Auction

## Antiques, Fine Art,

*Collectables, etc.*



# Saturday November 6th at 11am



easy Live Auction.com

LIVE AUCTIONS

Joseph **WOODWARD** & Sons, Ltd.

Auction Rooms, 26, Cook Street, Cork.

€5

[www.woodward.ie](http://www.woodward.ie)

JOSEPH WOODWARD & SONS LTD

Founded 1883



# WOODWARDS

ESTD.  
1883

**135 years serving the people of Cork**

**Antiques, Fine Art & Collectables**

**Saturday November 6th 2021 at 11am**

**On View: Preceding Monday to Friday from 10am to 5pm**

*Full details and bidding at [www.woodward.ie](http://www.woodward.ie)*

*Live Bidding with*



**FORTHCOMING AUCTIONS:**

**SPECIAL AUCTION**

ANTIQUES, FINE ART & COLLECTABLES

PRIVATE COLLECTION OF FINE WINES

FEATURING AN EXECUTORS SALE

Saturday December 4th 2021

Entries Now Invited

**SPECIAL AUCTION**

**CONTENTS WITHIN MILLBORO HOUSE,  
LEE ROAD, CORK.**

ANTIQUES, FINE ART, & COLLECTABLES

JANUARY 2022



**Paintings and Sculpture:**

*When the Forename(s) and Surname of the Artist are given, in our opinion this is a work of the Artist.*

*When the Initials of the Forename(s) and the Surname of the Artist are given, in our opinion this is a work of the period of the Artist which may be wholly or partly his work.*

*When the Surname only of the Artist is given, in our opinion this is a work by the school, or by one of the followers of the artist, or in his style and of uncertain date.*

*Purchasers are allowed seven days from the date of the Auction to satisfy themselves as to the accuracy of the catalogue description.*

*Please note the Conditions of Sale as displayed in the Auction Rooms.*

*Estimates given are our opinion at the time and are subject to revision.*

**Collection of Purchases:**

**All purchases can be collected from 10am-5pm Monday and Tuesday**

or be subject to a daily storage/insurance charge of €15 per day for furniture and €5 per day for other items.

Please note – no vehicular access to Cook Street from 11am – 5pm

**Joseph *WOODWARD* & Sons, Ltd.**

**26, Cook Street, Cork**

Tel: 021-427 3327 email: [auctions@woodward.ie](mailto:auctions@woodward.ie)

**A Family Business since 1883**

**[www.woodward.ie](http://www.woodward.ie)**



1. Chestnut framed single bed with turned reeded rails



8. Edwardian oblong occasional table with square tapering legs



2. Edwardian mahogany rectangular occasional table with square legs



9. Round occasional two tier table with decorated top and shaped legs



3. Regency design gilt framed shaped wall mirror with ornate scroll decoration



10. Edwardian inlaid mahogany corner display cabinet with dentil frieze, astragal glazed door, shelved interior, press under with panelled door, on plinth



4. Victorian brass fire trivet with shaped finials and claw feet



11. Gothic style wrought iron double bed with side irons



5. Edwardian inlaid mahogany dressing table with bevelled swivel mirror, two jewellery drawers, two short and two long drawers under, with drop handles, on tapering legs



12. Pair of ornate ormolu two branch light fittings with cranberry drops



6. Edwardian inlaid mahogany chest of two short and three long drawers with round drop handles, on square tapering legs



13. Edwardian mahogany cased domed bracket clock with ormolu mounts and silvered dial, stamped Chas. Frodisham, Clockmaker to HM The King



7. Edwardian brass railed bed ends with serpentine shaped tops, shaped finials and side urns



14. Ten piece gilt decorated Wade tea service



15. Thut Mobil Swiss art deco style ebonised display cabinet with angled sides, glazed doors and shelving, double press under, on plinth



22. Full pile Persian Sa-rouk carpet with medallion design 310 x 200cm



16. Painted pine cabinet with press and three drawers with round and bun feet



23. Edwardian mahogany cased regulator clock with framed dial and pendulum



17. Victorian mahogany swivel mirror with round top, reeded tapering columns, on shaped plinth with scroll feet



24. Edwardian style drop-leaf press with pull-out supports, three drawers with drop handles, on cabriole legs with pad feet



18. Oriental Foo-dog ornament with gilt decoration



25. Victorian walnut Scotch chest with frieze drawer, two short and three long drawers under, turned columns, on shaped plinth



19. Victorian inlaid walnut hexagonal shaped occasional table with turned columns and stretchers, on splayed legs



26. Edwardian mahogany hexagonal centre or occasional table with turned columns, railed stretcher, on castors



20. Edwardian mahogany cabinet with drop-down front, press under with panelled doors, drawer under with drop handles, on bracket feet



27. Gilt framed wall mirror with ornate foliate decoration - colour bronze gold



21. Edwardian design inlaid nest of three tables with reeded borders and tapering legs



28. Four pieces of French porcelain animal decorated kitchen storage set



29. Edwardian mahogany press or television cabinet with brass drop handle, adjustable shelving, on plinth



36. Victorian mahogany Pembroke table with drop leaves, pull-out supports, turned legs and stretcher, with bracket feet



30. Victorian mahogany bow fronted chest of two short and three long drawers with round handles, on turned legs



37. Ornate Victorian style wall mirror in ornate foliate decorated carved frame



31. Victorian oval walnut occasional table with ornate scroll and string inlay, on four turned shaped columns, on carved feet with castors



38. Three old earthenware steins with pewter tops and shaped handles, Cardinal & Low-enbrau, and a ewer



32. Pair of ornate brass candlesticks, in the form of ladies on a figured seat, on shaped bases



39. Mahogany three tier whatnot with dog ear corners, frieze drawer with brass handle, twist reeded columns, on shaped feet



33. Ornate Victorian style brass samovar with teapot on top, shaped handles and tap, on round base with four cast legs



40. Georgian mahogany bureau with drop-down front, pull-out supports, fitted interior, four drawers under with brass drop handles and pierced back plates, on bracket feet



34. Edwardian mahogany oblong occasional or coffee table with foliate decorated border, on cabriole legs



35. Victorian style mahogany extending dining table with extra leaf inset, angled corners, on turned reeded tapering legs with castors



41. Victorian walnut bow fronted three tier whatnot with ornate pierced fretwork back, turned finials, twist reeded columns, lower sectioned canterbury, on turned legs with castors. Stamped J Byrne, Henry Street, Dublin



42. Ivory ground full pile Kashmir rug Sharbas design 180 x 118cm



43. Regency design gilt framed bevelled glass wall mirror with scroll decoration



44. Edwardian inlaid mahogany small chest of four drawers with round drop handles, on bracket feet



45. Louis XV style mahogany secretaire abt with reeded frieze, serpentine fronted top drawer, drop-down writing slope with leatherette inset and fitted interior, press under, panelled doors, on turned legs



46. Edwardian mahogany nest of three tables with raised borders, turned columns, on bracket feet



47. Walnut cased thirty hour clock with extra bushed movement by Jerome & Co., New Haven, Connecticut, USA



48. Brass bankers lamp with round base and green tinted glass shade



49. Victorian mahogany Pembroke table with drop leaves, pull-out gateleg support, turned columns and stretcher, on bracket feet



50. Edwardian style mahogany sofa table with reeded borders, drop leaves with pull-out supports, 2 frieze drawers with drop handles, on turned columns with stretcher, on reeded splayed legs with brass claw feet



51. Edwardian inlaid mahogany nest of three tables on spindle columns with bracket feet



52. Pair of ornate brass table lamps with Corinthian columns and round bases



53. Georgian mahogany wine cooler box with reeded borders and sectioned interior



54. Victorian design mahogany stool with needlepoint cushion, on cabriole legs with pad feet



**55.** Georgian mahogany library or dining table with tip-up top, rounded corners, raised on turned tapering column, on reeded quadrapod with brass cap toes and castors



**62.** Victorian copper kettle with shaped handle and spout



**56.** Edwardian inlaid walnut round occasional table on triple turned columns on tripod



**63.** Copper gallon measure of oval baluster form with shaped handle



**57.** Cast iron 'Irish Mist' advertising figure of a guard



**64.** Edwardian design mahogany davenport with pen tray, lift up lid with drawers under, side drawers with bun handles, on plinth with bun feet



**58.** Metal figure of a sailor on demi-lune base



**65.** Beidermeier oblong walnut table with rounded borders, frieze drawer, round handle, on shaped legs



**59.** Georgian mahogany round occasional or centre table with tip-up top, bird cage support, on turned tapering column, on hipped tripod with pad feet



**66.** Victorian mahogany occasional table with wavy borders, raised on baluster turned column, on hipped tripod



**60.** Edwardian inlaid mahogany chest of two short and three long drawers with rosewood and satinwood inlay, brass drop handles, on bracket feet



**67.** Pair of brass table lamps with reeded columns and round bases



**61.** Edwardian mahogany centre or occasional table with wavy border, on cabriole legs with shaped stretchers



**68.** Regency design gilt framed wall mirror with reeded decoration and foliate pediment



**69.** Edwardian mahogany lowboy with three drawers, brass drop handles, on cabriole legs with pad feet



**70.** Victorian walnut chest of two short and two long drawers with bun handles and brass escutcheons. Top needs restoration/repair



**71.** Edwardian mahogany Pembroke table with drop leaves, rounded borders, pull-out supports, on square tapering legs



**72.** Bronzed ornament of a dog on oblong base



**73.** Pair of metal candlesticks with reeded columns on oval bases



**74.** Victorian oak Pembroke table with D-shaped drop leaves, gateleg support, with turned columns and legs, and stretchers



**75.** Victorian mahogany breakfront sideboard with shaped back, shield inset, scroll decoration, three frieze drawers, panelled doors under with shelved interior, on breakfront plinth.



**76.** Edwardian inlaid mahogany Pembroke table with D-shaped drop leaves, bowed frieze drawer, brass drop handles, string inlay, on square tapering legs with castors



**77.** French style slate mantle clock with round brass framed dial and pendulum on oblong base



**78.** Oval bronzed framed swivel mirror with foliate decoration, shaped columns and base



**79.** Edwardian inlaid and crossbanded mahogany vienna wall clock with serpentine frieze, enamel dial, brass pendulum, and shaped base



**80.** Edwardian Carton House style desk with numerous drawers, brass drop handles, frieze drawers, leatherette inset, on square tapering legs with castors



**82.** Persian style rug with branch decoration 185 x 123 cm



**83.** Art Deco style table lamp with shaped base and angular foliate decorated shade





**84.** Georgian mahogany fuel cabinet with drop-down front, lined interior, brass finials and turned rails, shaped handles with Irish coat of arms



**85.** Edwardian mahogany bookcase with adjustable shelving, on oblong plinth



**86.** Thirteen piece Japanese floral decorated service



**87.** Pair of turned yew goblets with round bases



**88.** Large red ground hand woven Persian Mashad carpet traditional floral design 395x 295cm



**89.** Edwardian inlaid mahogany Vienna wall clock with circular brass framed enamel dial, brass pendulum, turned columns, and shaped finials



**90.** Edwardian mahogany tea table with serpentine sided fold-over top, baize surface, foliate carving, on cabriole legs



**91.** Georgian oak round occasional or lamp table with reeded border, on vase turned column, on hipped tripod



**92.** Ornate terracotta figure of a horse on oblong stand



**93.** Art Deco panel with multi-coloured inserts



**94.** Ornate Art Deco style electric lamp with blue tinted panelled shade and shaped base



**95.** Louis XV style mahogany bureau plat desk with serpentine sides, leatherette inset, 3 shaped frieze drawers with shaped handles, ornate ormolu mounts, on cabriole legs



**96.** Round inlaid mahogany occasional or centre table with reeded rim, bowed frieze drawer with round handles, on vase turned column, on reeded tripod with spade feet



**97.** Art Deco style baluster shaped vase with ornate coloured panelled decoration



- 98.** Art Deco style cheese dish & cover with round handle



- 99.** Pair of Victorian design metal carriage lamps with burners and shaped handles



- 100.** Edwardian design mahogany twin pillar dining table with reeded borders, two extra leaves inset, raised on turned columns, on reeded splayed tripods, with brass capped toes and castors



- 101.** Victorian style oval occasional or coffee table, on vase turned column, on reeded tripod with brass lion-claw toes and castors



- 102.** Set of seven Imari plates with wavy rims, burnt ochre and deep blue and yellow foliate decoration



- 103.** Pair of circular Imari wall plaques with wavy rims, burnt ochre and deep blue foliate decorated panels



- 104.** Pair of circular Imari style wall plaques with wavy rims, burnt ochre and deep blue foliate decorated panels



- 105.** Edwardian inlaid and crossbanded mahogany chest on chest with two short and six long drawers, satinwood and rosewood inlay, ornate shaped brass handles and escutcheons, on bracket feet



- 106.** William IV mahogany Pembroke table with serpentine shaped drop leaves, pull-out supports, on shaped tapering column with collar and concave plinth with bun feet



- 107.** Mahogany and gilt framed rectangular bevelled glass wall mirror



- 108.** Edwardian inlaid mahogany kidney shaped serving tray with shaped border, ornate foliate and music inlay, and brass handles



- 109.** Georgian mahogany tea table with fold-over top, pull-out gateleg support, on square tapering legs with spade feet



- 110.** Edwardian design serpentine fronted inlaid hall or side table with reeded frieze drawer, drop handle, on turned reeded tapering legs with shaped stretchers



**111.** Edwardian inlaid mahogany occasional table with string inlaid top and friezes, on square tapering legs with stretchers



**112.** Waterford Crystal cut glass round bowl with strawberry diamonds



**113.** Waterford Crystal cut glass flower vase with diamond decoration and round base



**114.** Ornate shaped bevelled glass wall mirror with ornate foliate and grapevine decorated frame



**115.** Dutch longcase clock with ornate figured and foliate decorated framed enamel dial, ornate foliate decorated with swags and flowers, the case with foliate decoration, on square base. 'A St Pierre des Care'



**116.** Vintage red ground Persian Hamadan village rug 305 x 130cm



**117.** French style brass framed triple travelling mirror with ornate pierced pediment



**118.** World globe on polished brass base



**119.** Art Deco style tall metal fire pit of angular form with fire pit and log store



**120.** Victorian mahogany Pembroke table with D-shaped drop leaves, gateleg support, on cabriole legs with pad feet



**121.** Georgian mahogany work box with reeded borders, fitted interior, round handles, on turned shape column, on hexagonal plinth with splayed feet and brass cap toes



**122.** Edwardian brass fire fender with shaped finials, beaded and reeded decoration



**123.** Georgian style brass helmet shaped coal scuttle with shaped timber handles and round base



**124.** Edwardian style gilt framed bevelled glass wall mirror



**125.** Victorian inlaid walnut credenza with ornate ormolu and figured enamel insets, ormolu mounts, bowed side presses with shelving, beaded decoration, on turned shaped legs



**131.** Square topped mahogany table with rounded borders, on metal column with ornate cast iron foliate decorated base



**132.** Allegorical ornate bronzed figure of a lady and child, on shaped base



**126.** Victorian burr walnut davenport with shaped top, stationery press, interior fitted with drawers, the side drawers with round handles, foliate carved cabriole columns, on oblong plinths with bun feet



**133.** Bronzed figure of a little girl with boot on stool



**127.** Tall Waterford Crystal cut glass flared flower vase with wavy border, studded and strawberry diamond decoration, on raised base



**134.** Bronzed figure of William Shakespeare on circular base



**128.** Set of six Waterford Crystal cups with hobnail and faceted decoration, and shaped handles

**135.** Louis XV style cabinet on stand with stepped top, mirrored back, astragal glazed doors with mirrored back and glass shelving, bow fronted base with frieze drawer, brass drop handles, on square tapering legs with spade feet



**129.** Set of three circular Royal Copenhagen plaques decorated with winter scenes

**130.** William IV rosewood card table with swivel fold-over top, raised on vase turned shaped column, on foliate carved splayed quadrapod with brass capped toes and castors



**136.** Victorian mahogany and walnut serpentine shaped oblong occasional table with turned tapering columns, turned finials, oblong stretcher, on foliate carved legs with scroll feet





**137.** 'Irish Whiskey Company, Belfast, Ireland' advertising jug with shaped handle



**138.** Art Deco style bowl with wavy rim and geometric pattern



**139.** Long bevelled glass wall mirror with gilt frame



**140.** Victorian mahogany Pembroke table with D-shaped drop leaves, pull-out gateleg support, on cabriole legs with pad feet



**141.** Nest of two Edwardian mahogany tables with turned tapering columns, cross stretchers and bracket feet



**142.** Victorian Coromandel liqueur tantalus with brass handles and banding, sectioned interior, with brass lock



**143.** Edwardian brass theodolite with telescope and level on swivel base, in presentation case



**144.** Art Deco style table lamp with ornate and multi-coloured shade, on round base



**145.** Early Georgian walnut and rosewood kneehole desk with frieze drawer, six side drawers, brass drop handles with pierced back plates, on bracket feet



**146.** Edwardian inlaid mahogany bureau with fall-out front, fitted interior, three drawers under with drop handles, on cabriole legs



**147.** Ornate Waterford Crystal cut glass flower vase with serrated rim, strawberry diamonds and hobnail cut decoration, on round base



**148.** Set of five Waterford Crystal cut glass sundae or champagne glasses with diamond decoration and knop stems



**149.** Edwardian square footstool with ornate foliate needlepoint



**150.** Edwardian inlaid mahogany display cabinet with glazed doors and sides, shelved interior, ornate ribbon herringbone and foliate inlay, shaped apron, on cabriole legs with pad feet



**151.** Victorian mahogany torchere or plant stand with raised rim, reeded foliate decorated column, on hipped tripod



**158.** Electric table lamp with tinted shade, figure of a grape vendor with boy and puppy, on foliate decorated base



**152.** Mariners hand held folding compass with mirrored back, stamped 'Stanley, London'



**159.** Large red ground Iranian Kerman carpet with foliate pattern 420 x 274cm



**153.** Mariners folding compass with shaped handle, Natural Sine on top. Stamped Stanley London



**160.** William IV oblong mahogany library or side table with rounded borders, two frieze drawers, scroll mounts and round finials, raised on tapering columns with scroll base, on oblong plinths with round feet



**154.** Regency design gilt framed bevelled glass wall mirror with scroll and pierced decoration

**161.** Ornate slate French mantle clock with railed top, Renaissance scene inset, round brass framed dial, ormolu mounts, on brass feet



**155.** Georgian mahogany cellarette with lionmask brass drop handles, with turned legs and castors

**162.** Set of four Asian oblong dishes with blue and white foliate decoration



**156.** Art Deco style electric table lamp with decorated panelled hexagonal shade, on baluster column, on round base

**163.** Pair of Oriental Famille Rose teapots with shaped spouts, lids and ornate foliate bird decoration



**157.** Regency style oval bevelled glass mirror with ornate urn ribbon and foliate decorated pediment, egg and dart border

**164.** Pair of Asian small bowls of hexagonal form with blue and ochre decoration





**165.** Edwardian style mahogany sideboard with three central drawers, two shelved side presses with panelled doors, brass drop handles, on cabriole legs with claw on ball feet



**166.** Edwardian inlaid mahogany hall table with two frieze drawers, round brass drop handles, inlaid square tapering legs with cross stretchers and spade feet



**167.** Pair of porcelain Art Nouveau style jardiniere stands with ornate gilt and foliate decoration



**168.** Art Deco electric standard lamp with ornate multi-coloured faceted shade, on foliate decorated round base



**169.** Ornate cast iron cross 'Mary of the Roses' on shaped base



**170.** Edwardian style mahogany slim bureau bookcase with swan arch pediment, oval glazed door with shelved interior, bureau with fall down front and fitted interior, two short and 3 long drawers under with brass drop handles, on bracket feet



**171.** Edwardian mahogany small display cabinet with astragal glazed doors, glass shelving, cabriole legs with pad feet



**172.** Waterford crystal cut glass dish with hobnail and faceted cut



**173.** Set of six Waterford Crystal white wine glasses with diamond and faceted decoration, knop stems and round bases



**174.** Set of seven Waterford Crystal cut glass sundae glasses with faceted decoration and rounded bases



**175.** Victorian mahogany tea table with fold-over top, gateleg support, string and box inlay, on turned tapering legs



**176.** Victorian brass fire fender with rope edge and pierced decoration, and lionclaw feet



**177.** Edwardian style brass companion set on stand with ball shaped tops and rectangular base



- 178.** Georgian design helmet shaped coal scuttle with shaped handles



- 179.** Set of brass stair rods with clips



- 180.** Edwardian mahogany dome topped bureau bookcase with astragal glazed door, shelved interior, bureau with fall-out front and fitted interior, frieze drawer with brass drop handles, on turned tapering legs on ball feet



- 181.** Large multi coloured ground Persian Tabriz carpet with bespoke floral desing



- 182.** Cast iron miniature camping stove with brass mounts and doors



- 183.** Cast iron tall post box with brass keys



- 184.** Cast iron oval Ford hanging sign with wall mount



- 185.** Edwardian mahogany breakfront sideboard with two central drawers, side presses with ornate brass lionmask drop handles, on tapering legs with spade feet



- 186.** Edwardian style 'Mamas and Papas' rocking horse with leatherette saddle and shaped base



- 187.** Five piece cast iron garden or patio suite - round table and four armchairs with rose decoration



- 188.** Georgian copper helmet shaped coal scuttle with shaped handles and round base



- 189.** Edwardian oval upholstered footstool on carved cabriole legs



- 190.** Inlaid arbutus wood and yew Killarneyware teapoy with string and fern inlay, lift-up lid, fitted interior, wavy apron and lower shelf, on cabriole legs



- 191.** Edwardian mahogany shelf unit with reeded sides and adjustable shelving





**192.** Yachtmaster ships log in fitted carrying case



**199.** Pair of cast iron model cannons on wheeled carriages



**193.** Washed red ground full pile Sarouk runner 319 x 116cm



**200.** Georgian style mahogany corner display cabinet with scroll top, astragal glazed doors, on lion claw feet



**194.** Cast iron postbox with horse decoration



**201.** French style ormolu mantel clock with cherub and foliate decoration, circular enamel dial, and shaped base



**195.** William IV mahogany work box, the drawer with sectioned shelf, and material drawer under, on U-shaped stand, on hexagonal shaped column with collar, on concave plinth with ball feet



**202.** Spelter figure of a young artist on circular spreading base



**196.** Gilt framed mirrored advertising sign 'Jameson Irish Whiskey'



**203.** Art Deco style figure of "Kneeling lady" on oblong base



**197.** Edwardian style horse-shoe shaped coat hanger with metal hooks



**204.** Victorian brass and cast iron serpentine fronted fire grate with shaped finials and pierced decoration



**198.** Vintage oak military chest with press, stamped "J Twohig The Connaught Rangers"



**205.** Nelson style mahogany sideboard with rope edge border, three drawers and four presses with reeded borders and brass drop handles, on turned legs



**206.** Pair of Oriental baluster shaped vases with shaped and figured handles, horse and figured decoration, on circular bases



**213.** Georgian style helmet shaped copper coal scuttle with shaped handle



**207.** Edwardian style mahogany framed bevelled glass wall mirror



**214.** Art Nouveau chrome reading lamp with adjustable column and round base



**208.** Plaster bust of a bearded gentleman on oval spreading base



**215.** Edwardian inlaid rosewood sofa table with drop leaves, rounded borders, pull-out supports, beaded decoration, two frieze drawers, raised on hexagonal tapering column, with beaded collar, on concave plinth, with scroll feet and ormolu mounts



**209.** Pair of round marbled plaques decorated with children in relief



**210.** Edwardian pine corner display cabinet with serpentine fronted shelves, press under with panelled door, on bracket



**216.** 'John Kelly's Dublin Whisky' framed pub sign



**211.** Georgian mahogany corner wall press with curved doors, shelved interior and bass escutcheons



**217.** 'Players navy cut' advertising sign



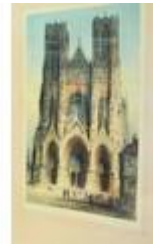
**212.** Waterford Crystal cut glass ball shaped flower bowl with diamond decoration



**218.** Guinness gilt framed advertising sign



220. Continental School 'Alpine study' oil on board 24x30cm



227. Continental School 'Rheims Cathedral' etching 64 x41cm



221. French School 'The bird shoot' limited edition, signed 45x30cm



228. Carl Jender 'Canadian geese flying over an estuary' oil on canvas, 67x99cm signed



222. John Cother Webb 'The benevolent sportsman' and After George Morland 'Figures outside an inn' coloured pair of mezzotints 36x46cm each signed and stamped



229. Set of four coloured prints 'Continental scenes' 22x29cm each



223. Grace Henry HRHA 'Portrait of Paul Henry' coloured print 38x40cm



230. Cahill O'Connor 'West Ireland' oil on board 50x60cm signed



224. E. Tauber 'Continental lakeside scene with trees' oil on canvas 38x58cm signed



231. I Madeley 'Horses drinking from a trough' oil on canvas 73x90cm signed and dated



225. Irish school 'Study of a Bearded Tit' watercolour and pencil 12x17cm signed



232. Peadar Drinan 'Quad, UCC' limited edition print 36x56cm



226. Cahill O'Connor 'Irish cottages' oil on canvas 50x75cm signed



233. Continental School 'Riverside study with boats and cottages' oil on canvas, signed H88 x 73cm



234. Dutch school 'Wreck on a beach' oil on board 19x24cm signed



**235.** Orla Egan 'Times past at Ramelton' oil on board 16x20cm signed



**243.** James S. Broughan 'Trawler by a pier with figures' oil on board 45x35cm signed



**236.** Continental School 'Bruges street scenes' pair of watercolours 22x28cm each



**244.** Gladys Maccabe ROI FRSA MA HRUA 'Lady with red hat' oil on board 48x38cm signed



**237.** Thomas Cougill 'Infinity' oil on board 23x23cm signed



**245.** Arthur Maderson 'With humble apologies to Rembrandt' oil on board 56x76cm signed



**238.** Cahill O'Connor 'Stormy waves' oil on board 19x24cm signed



**246.** Cahill O'Connor 'Wild Atlantic' oil on board 45x60cm signed



**239.** Cahill O'Connor 'Kil-larney Lakes' oil on board 58x58cm signed



**247.** Rowland Davidson '1999' oil on board 48x48cm signed



**240.** Arthur Maderson 'Meadow, Evening, Le Vigan, France' palette knife on board, signed



**248.** Irish School 'Blarney castle and woodland' oil on board 50x60cm initialled



**241.** Cahill O'Connor 'Cutting the turf' oil on board 50x55cm signed



**249.** Lia Walsh 'Woodland Path' oil on board 62x75cm signed



**242.** B. Thomas 'Cats on a blanket' oil on board 24x19cm signed



**250.** Cahill O'Connor 'Irish bog' oil on board 44x43cm signed



- 251.** Cahill O'Connor 'Cork harbour one design' oil on canvas 44x58cm signed



- 252.** Cahill O'Connor 'West Coast' oil on canvas 50x60cm signed



- 253.** Canteen of cutlery in fitted carrying case

- 254.** Ebonised walking stick with ornate silver plated handle



- 263.** Set of six Queen Anne design dining or drawing room chairs with Regency style upholstery and brass buttons, on carved cabriole legs with scroll feet



- 264.** Set of three Victorian rosewood balloonback dining chairs with shaped rails, serpentine fronted upholstered seats, on tapering legs



- 265.** Set of six balloonback dining chairs with upholstered seats, on turned tapering legs



- 260.** Set of eight Chippen-dale style mahogany dining chairs with pierced wheat-sheaf splats, shaped tops, upholstered seats, on carved cabriole legs with claw on ball feet, inc. two carver arm-chairs



- 266.** Pair of Edwardian style bedroom chairs with reeded rails, upholstered seats, on turned legs with stretchers



- 261.** Victorian walnut nursing chair with ornate gilt foliate upholstery, barleytwist columns, on baluster turned tapering legs with castors



- 262.** Pair of Victorian balloonback occasional chairs with leatherette seats, on baluster turned tapering legs



- 267.** Set of four Victorian balloonback dining chairs with foliate upholstery, on baluster turned legs



- 268.** Victorian style cast iron garden bench with double oval shaped back, with ornate foliate decoration, serpentine fronted seat, shaped arms and legs



- 269.** A pair of Victorian mahogany spoonback library chairs with scroll decoration, buttoned upholstery, serpentine fronted seats, on turned tapering legs with castors



- 270.** Pair of Georgian design wingback library armchairs with buttoned leather upholstery, brass buttons, cushions, on cabriole legs including a pair of matching footstools



- 271.** Leather upholstered three seater Chesterfield couch with buttoned upholstery, on castors



- 273.** Edwardian inlaid mahogany bedroom chair with railed upholstered back and serpentine fronted seat, on sabre legs



- 274.** Victorian style upholstered armchair with buttoned back, on baluster turned tapering legs



- 275.** Victorian mahogany open armchair with foliate carving, button-back and serpentine fronted upholstered seat, on shaped tapering legs



- 276.** Pair of Jacobean carved oak "throne" armchairs, the high backs ornately decorated with birds and foliage, scroll columns, carved arms, upholstered backs and seats, on ornately carved legs with turned stretchers

*Purchasers are allowed seven days from the date of the Auction to satisfy themselves as to the accuracy of the catalogue description.*

*Please note the Conditions of Sale as displayed in the Auction Rooms.*

*Collections: All purchases to be collected by 5pm on the Friday after the auction, or be subject to a Storage/insurance charge of €5 per day for small items and €15 per day for larger items*

*Conditions of Sale:*

*1. The highest bidder for each lot shall be the purchaser. Should a dispute arise the Auctioneer shall at his discretion put the lot in dispute up for sale again or withdraw same from sale or declare the purchaser thereof.*

*2. The Auctioneers reserve for themselves the right to bid on behalf of the vendors and to reject or refuse to accept any bid without giving any reason therefor. The bidding shall be regulated by the Auctioneers and no bidding shall be retracted.*

*3. The price at which the bidder purchases each lot will be exclusive of V.A.T. and premium.*

*4. If required by the Auctioneer, the purchaser of each lot shall give his name and address to the Auctioneers representative and shall also immediately pay a cash deposit of 25% of the purchase money (or such sum as the Auctioneer may stipulate). The balance of the purchase money together with V.A.T. (if applicable), Auctioneers commission at the rate of 23% of the full purchase price plus V.A.T. at the prevailing rate shall be paid on the day of the sale, and if not so paid the Auctioneers reserve the right to charge interest on any unpaid balance at the rate of 18% per annum until payment is made.*

*5. Each purchaser's sale account must be paid in full before the removal of any lot.*

*6. Purchasers will be required to pay either in cash or by bankers draft. There is a service charge of 2% for credit cards.*

*7. The Auctioneers reserve the right to alter, divide, group or withdraw any lots either before or at any time during the sale.*

*8. The vendors or their agent reserve to themselves the right of repurchasing any lot, or part lot, at the knocked down price, or proportion of such price, where it is found necessary to let that lot, or part lot, remain and the decision of the Auctioneers respecting same shall be final and binding on all parties.*

*9. Each purchaser shall be deemed to have inspected and to be thoroughly acquainted with the contents and conditions of the lot or lots purchased and to have purchased same subject to all faults, deficiencies, imperfections and errors (if any) of any description therein, and no allowance whatsoever shall be made in respect of any difficulty of access.*

*10. The description, measurements and numbers set out in the catalogue are believed to be correct but no guarantee or warranty is given or is to be implied as to the correctness of such descriptions, or the genuineness or authenticity of any lot or its fitness for any particular purpose.*

*11. Each lot shall, from the fall of the hammer, be at the sole risk of the purchaser and must be cleared and taken away, without fail, at the purchasers expense, in such order as the Auctioneers or their representative shall direct not later than 5.00 p.m. on the Friday following the sale, after which time any lot or lots remaining on the premises shall be liable for rent and expenses, storage and insurance charges, and will also be liable to be removed from the premises and left outside at the purchasers risk in all respects.*

*12. The purchaser will be responsible for all damage that it, its carriers, servants or agents may do to the property of any third (and in particular to the vendors premises) in removing the lot(s).*

*13. If within seven days after the sale the Auctioneers have received notice in writing from the purchaser that a lot is not as described in the catalogue and this notice can be substantiated with evidence, the burden of proof to be upon the purchasers, then the Auctioneers at their discretion may rescind the sale and return the purchase price.*

*14. No liability will be accepted by the vendors or the Auctioneers for personal injuries of any description and from whatsoever cause arising, sustained by any person whilst on the property of the vendors for the purpose of inspection, or during the sale, or whilst removing any lots, or on the premises in connection with the sale.*

*15. Each purchaser shall be responsible for and will release and indemnify the vendors, their servants and agents, from and against all liability in relation to each lot or lots sold or otherwise.*

*16. Each purchaser shall provide all vehicles, equipment and labour necessary for the removal of purchases.*

*17. If the purchaser shall make default in payment of his purchase money or neglect to comply with these conditions, or any of them, all money paid by him or his agent at the time of sale shall be forfeited to the vendors who shall be at liberty to re-sell the lot or lots at such time or times as they may think proper and without notice to the party or parties making default or neglecting to comply with these conditions, and in case of non-payment thereof the same shall be recoverable as and for liquidated damages. Any surplus arising on such re-sales shall belong solely to the vendors. This condition shall not prejudice the vendors or Auctioneers right to enforce the contract made at this present sale.*

*18. Neither the vendors or the Auctioneers will hold themselves responsible for any lots while on the premises. No lots may be collected outside the dates and hours set out nor will the Auctioneers transfer lots from one buyer to another.*

*19. The vendors, their servants or agents shall not be liable for any loss, damage or injury occasioned to any purchaser, the purchasers servants or agents, or to any person or any property which may be caused by any defects, imperfection or malfunction in any lot or lots or contamination caused by same.*

*20. If any dispute or difference arises concerning any lot or the interpretation of these conditions, the same shall be settled by the Auctioneers whose decision shall be final and binding on all parties concerned.*



# WOODWARDS

ESTD.  
1883

**Successful sales since 1883**

**We're selling property.. Are you ?**

The house market is starting to pick up with an increase in activity in some sectors  
If you are contemplating selling, talk to us. We have been through many recessions and have the knowledge gained over 3 centuries and 5 generations of experience that you will not get elsewhere.

Or new website **www. HomeMatch .ie** is our database listing the detailed requirements of hundreds of potential buyers. If you are looking log in to [www.homematch.ie](http://www.homematch.ie) and let us know what you are looking for.  
If you are selling, let us make a match with a potential buyer.

We are the First Irish auctioneers on the Internet and receive up to 6,000 visitors per month.  
Check us out at [WWW.WOODWARD.IE](http://WWW.WOODWARD.IE)

**Monthly Auctions of Antiques, Fine Art, Silver, Porcelain, and quality house contents**  
Held in our City Centre Auction Rooms in Cook Street and in Period Properties throughout Munster.

Free inspection and appraisal in our offices Monday - Friday.

### **The Full Service**

from start to finish includes:

Removal of saleable items to our auction rooms

Clearance and preparation of property including skips, garden, etc.

Marketing, advertising and internet,

Viewing and negotiation,

Sale, and monitoring of all stages up to contract and close.

**We are the longest established family firm of Auctioneers in Cork  
with a hard earned reputation for integrity and results.  
Call us for free advice on how to achieve the maximum price for your  
property**

**Successful sales since 1883**

**Joseph *WOODWARD* & Sons, Ltd.**

**26, Cook Street, Cork**

**[www.woodward.ie](http://www.woodward.ie)**