



# WOODWARDS

ESTD.  
1883

FOUNDED 1883 – 5 GENERATIONS OF SUCCESS

# Antiques Auction

## Antiques, Fine Art,

*Collectables, etc.*

## Saturday September 24th at 11am



Joseph **WOODWARD** & Sons, Ltd.  
Auction Rooms, 26, Cook Street, Cork.

[www.woodward.ie](http://www.woodward.ie)



JOSEPH WOODWARD & SONS LTD

Founded 1883

**135 years serving the people of Cork**

**Antiques, Fine Art & Collectables**

**Saturday September 24<sup>th</sup> at 11am**

On View: Preceding Saturday & Sunday 2pm-5pm, Monday to Friday from 10am to 5pm

Full details and bidding at [www.woodward.ie](http://www.woodward.ie)

Live Bidding with  **LIVE AUCTIONS**

## SPECIAL AUCTION



**COLLECTION OF PAINTINGS & ARTWORKS,  
IRISH & ENGLISH SILVER**

**OCTOBER 22<sup>ND</sup> AT 11AM**

**VIEW PRECEDING WEEK**

## SPECIAL AUCTION

**ANTIQUES & FINE ART**

**RECENT ESTATES IN MODEL FARM ROAD, WEST CORK AND DOUGLAS – NOVEMBER 26<sup>TH</sup>**

**ENTRIES CAN BE ACCEPTED FROM OCTOBER 26<sup>TH</sup>**

### Paintings and Sculpture:

*When the Forename(s) and Surname of the Artist are given, in our opinion this is a work of the Artist.*

*When the Initials of the Forename(s) and the Surname of the Artist are given, in our opinion this is a work of the period of the Artist which may be wholly or partly his work.*

*When the Surname only of the Artist is given, in our opinion this is a work by the school, or by one of the followers of the artist, or in his style and of uncertain date.*

*Purchasers are allowed seven days from the date of the Auction to satisfy themselves as to the accuracy of the catalogue description.*

*Please note the Conditions of Sale as displayed in the Auction Rooms.*

*Estimates given are our opinion at the time and are subject to revision.*

### Collection of Purchases:

**All purchases can be collected from 10am-5pm Monday, Tuesday and Wednesday**

or be subject to a daily storage/insurance charge of €15 per day for furniture and €5 per day for other items.

Please note – no vehicular access to Cook Street from 11am.

**Joseph *WOODWARD* & Sons, Ltd.**

**26, Cook Street, Cork**

Tel: 021-427 3327 email: [auctions@woodward.ie](mailto:auctions@woodward.ie)

**A Family Business since 1883**

**[www.woodward.ie](http://www.woodward.ie)**



**1.** Assorted lot of Spode and other blue and white ware

**€30-€60**



**5.** Assorted lot of porcelain, etc in box

**€30-€50**



**9.** Assorted lot of Oriental ware, etc in box

**€50-€80**



**2.** Assorted lot of brassware, etc in box

**€40-€60**



**6.** Assorted lot of blue and white and other ware in box

**€20-€40**



**10.** Assorted lot of ware, etc in box

**€20-€40**



**3.** Assorted lot of porcelain, ware, etc in box

**€20-€40**



**7.** Assorted lot of glassware in box.

**€20-€40**



**11.** Assorted lot of blue and white ware in box

**€40-€60**



**4.** Assorted lot of porcelain, ware, etc in box

**€20-€40**



**8.** Assorted lot of brassware, etc in box

**€20-€40**



**12.** Assorted lot of ware, etc in box

**€20-€40**





**13.** Assorted lot of blue and white porcelain in box

**€20-€40**



**14.** Assorted lot of silverplated items, etc in box

**€60-€100**



**15.** Edwardian mahogany display cabinet / bureau with glazed doors, glass shelving, bureau with fall-out front, fitted interior, press under, on cabriole legs

**€60-€100**



**16.** Regency style two tier corner washstand with shaped back, frieze drawer, round handles, shaped legs and stretcher

**€60-€100**



**17.** Regency design oval bevelled glass wall mirror

**€20-€40**



**18.** Edwardian style inlaid lamp table on tripod

**€25-€50**



**19.** Edwardian design mahogany cheval mirror with scroll and shell decorated frieze, domed top, bevelled mirror inset, turned columns, with foliate carved cabriole legs

**€100-€200**



**20.** Edwardian mahogany open bookcase with scroll decoration, adjustable shelving, on oblong plinth

**€120-€200**



**21.** Edwardian inlaid mahogany bookcase with adjustable shelving

**€60-€100**





**22.** Oval glass wall mirror with shaped decorated frame

**€15-€25**



**23.** Edwardian mahogany needlepoint firescreen on stepped base

**€20-€40**



**24.** Mahogany coffee table with reeded borders and tapering legs

**€40-€80**



**25.** Victorian style inlaid yew sideboard with three frieze drawers, presses under, with shelving, on bracket feet

**€100-€200**



**26.** Victorian walnut kidney shaped stool with ornate foliate needlepoint decoration, on turned shaped legs

**€40-€80**



**27.** Large bevelled glass wall mirror with foliate decorated frame

**€60-€100**



**28.** Edwardian style round school clock, with brass framed dial

**€60-€100**



**29.** Edwardian style nest of two tables with leatherette tops, and lyre columns

**€30-€50**



**30.** Victorian walnut Scotch chest with frieze drawer, two short and three long drawers under, turned columns, on shaped plinth

**€200-€400**



**31.** Edwardian style inlaid occasional table with wavy border and tripod

**€25-€40**



**34.** Edwardian design open bookcase with foliate decoration, adjustable shelving, on turned legs

**€60-€100**



**37.** Edwardian style round walnut and mahogany wine cooler with liner

**€40-€80**



**32.** Gold Kashmir rug with all over diamond design 205x97cm

**€100-€200**



**35.** Georgian mahogany chest of three drawers, the drawers with brass drop handles, on bracket feet

**€80-€150**



**38.** Art Deco parquetry timber round bowl with dish

**€20-€40**



**33.** Barrel shaped wine cooler with copper banding and shaped handle

**€20-€40**



**36.** Edwardian style painted domed bevelled overmantle mirror with scroll decoration

**€60-€100**



**39.** Oblong Victorian style mahogany coffee table with cabriole legs and pad feet

**€100-€150**





**40.** Edwardian pedestal office desk with leatherette inset, three frieze drawers, six pedestal drawers, with brass drop handles, on bracket

**€150-€250**



**43.** French style electric table lamp with ornate foliate decoration

**€40-€80**



**46.** Edwardian nest of three bow fronted occasional tables with reeded borders and legs

**€40-€80**



**41.** Edwardian small sofa shaped coffee table with drop leaves and reeded legs

**€60-€100**



**44.** Edwardian mahogany round occasional or coffee table with cabriole legs and pad feet

**€40-€80**



**47.** Assorted lot of tea services with ornate gilt and foliate decoration

**€40-€80**



**42.** Victorian style brass table lamp with baluster shaped green tinted glass shade

**€60-€100**



**45.** Victorian rosewood three tier dumbwaiter with angled sides, pierced fretwork decoration, bevelled mirror inset, turned shaped columns, on turned shaped legs

**€150-€250**



**48.** Earthenware pot with round lid and handle and bird decoration

**€40-€80**





**49.** Edwardian crossbanded mahogany small chest of two short and three long drawers with drop handles, on bracket feet

**€80-€150**



**52.** Guinness advertising ewer with figured decoration and shaped handle

**€80-€140**



**55.** Beidermeier oblong walnut table with rounded borders, frieze drawer, round handle, on shaped legs

**€100-€200**



**50.** Edwardian mahogany pembroke table with drop leaves, reeded borders, gateleg supports, on tapering legs

**€40-€80**



**53.** Pair of porcelain "Paddy Irish Whiskey" advertising jugs

**€60-€100**



**56.** Indian carved teak hexagonal shaped occasional table with folding base

**€20-€40**



**51.** Edwardian oval occasional or coffee table with tip-up top, on vase turned column with quadrapod

**€40-€80**



**54.** Edwardian walnut two tier round jardiniere or plant stand with pierced brass gallery, frieze drawer, on cabriole legs with ormolu mounts

**€120-€200**



**57.** Royal Doulton twenty one piece 'Diana Romance Collection' design tea service with foliate decoration

**€20-€40**



**58.** Pair of baluster shaped flower vases with ornate foliate decoration

**€40-€80**



**61.** Edwardian walnut and mahogany serpentine-fronted bachelors chest with pull-out shelf, four drawers under with brass drop handles, on bracket feet

**€100-€150**



**64.** Edwardian design nest of three serpentine tables with leatherette insets, on cabriole legs with pad feet

**€40-€80**



**59.** Pair of Edwardian style bow-fronted mahogany small chests of four drawers with brass drop handles, on bracket feet

**€150-€200**



**62.** Edwardian inlaid mahogany medicine cabinet or press with shelved interior, shell inlay, and shaped sides

**€40-€80**



**65.** William IV round mahogany centre or library table with tip-up top, hexagonal tape ring column, with collar on concave plinth with carved claw feet

**€150-€250**



**60.** Louis XV style cabinet on stand with stepped top, mirrored back, astragal glazed doors with mirrored back and glass shelving, bow-fronted base with frieze drawer, brass drop handles, on square tapering legs with spade feet

**€500-€800**



**63.** Persian style hearth rug with floral design

**€60-€100**



**66.** Edwardian design oblong hall table with rope edge border, on cabriole legs with shell knuckles

**€100-€150**





**67.** Blue ground Persian Sarouk runner with all over design

**€150-€250**



**68.** Ornate Art Deco hanging hall light shade with multi-coloured panels

**€100-€200**



**69.** Edwardian style serpentine fronted inlaid mahogany small chest of three drawers with drop handles and bracket feet

**€60-€100**



**70.** Georgian mahogany bureau bookcase with dentil frieze, astragal glazed doors, reeded adjustable shelving, brass rail, bureau with fall-out front and pull-out support, interior fitted with drawers and pigeon holes, four drawers under with round handles

**€150-€250**



**71.** Victorian mahogany round jardiniere or bust stand with turned tapering column, on shaped tripod

**€60-€100**



**72.** Forty piece Victorian style tea service with foliate and gilt decoration

**€40-€80**



**73.** Satsuma style porcelain jewellery box with ornate foliate and bird decoration

**€40-€80**



**74.** Edwardian style inlaid round occasional or coffee table with vase shaped column, on reeded quadrapod with brass claw toes

**€40-€80**



**75.** Victorian mahogany library or breakfast table with rounded borders, tip-up top, on turned tapering column with circular collar, on scroll quadrapod

**€300-€500**





**76.** Edwardian oval occasional or lamp table with reeded column, on hipped tripod

**€40-€80**



**79.** Edwardian style walnut two sectioned canterbury with shaped legs

**€40-€80**



**82.** Thirty eight piece assorted Ironstone dinner service with ornate foliate decoration

**€100-€200**



**77.** Pair of Germanic baluster shaped flower vases with shaped handles

**€40-€80**



**80.** George III mahogany bureau with drop down front pull out supports, fitted interior, three drawers under with drop down handles on bracket feet

**€150-€300**



**83.** Assorted lot of Masons Ironstone with floral decoration, etc

**€40-€80**



**78.** Replica brass 'Titanic' ship's bell and accompanying newspaper

**€100-€150**



**81.** Edwardian mahogany serpentine fronted canteen table with sectioned interior, and tapering legs with stretchers

**€50-€80**



**84.** Nest of three Edwardian design tables with leatherette insets and cabriole legs

**€40-€80**



**85.** Georgian mahogany tea table with fold-over top, pull-out gateleg support, on square tapering legs

**€100-€200**



**88.** Georgian mahogany round peat bucket with brass banding

**€150-€200**



**91.** Edwardian serpentine fronted mahogany small chest of three drawers, with drop handles, on bracket feet

**€80-€150**



**86.** Victorian oblong window seat with upholstered top, shaped apron, on cabriole legs with pad feet

**€150-€200**



**89.** Edwardian mahogany canterbury magazine rack with shaped rails

**€40-€80**



**92.** Art Deco style electric table lamp with panelled shade and shaped base

**€60-€100**



**87.** Georgian fuel box with shaped brass handle and mounts

**€80-€120**



**90.** Edwardian mahogany demi lune tea table with string inlay, fold-over top, gateleg support, inlaid frieze, on square tapering legs

**€300-€400**



**93.** Copper hanging scales with chain and weight

**€40-€80**





**94.** Victorian mahogany pembroke table with drop leaves, rounded borders, gateleg support, turned columns and stretcher, on castors

**€60-€100**



**97.** Oriental style ginger jar with ornate gilt and foliate decoration

**€60-€120**



**100.** William IV mahogany sideboard with shaped tray back, with scroll decoration, with frieze, on turned tapering columns, on square plinths

**€200-€400**



**95.** Edwardian inlaid and crossbanded mahogany serpentine fronted small sideboard with four frieze drawers, brass drop handles, on square tapering legs with spade feet

**€100-€200**



**98.** 'Irish Whiskey Company, Belfast, Ireland' advertising jug with shaped handle

**€60-€100**



**101.** Victorian oval press with curved door, shaped brass drop handles, on square tapering legs with castors

**€60-€100**



**96.** Small Edwardian chest of five drawers with brass drop handles, on bracket feet

**€60-€100**



**99.** Edwardian mahogany envelope card table with swivel top, fold-out diamonds, counterwells, frieze drawer with brass drop handles, on cabriole legs with shaped stretchers

**€150-€250**



**102.** Tall Killarney Crystal bright cut flower vase with wavy rim

**€60-€100**





**103.** Large cut glass flared flower vase with hobnail decoration

**€40-€80**



**106.** Victorian mahogany hall or side table with frieze drawer, on turned tapering legs

**€30-€50**



**109.** Edwardian mahogany serpentine fronted hall or side table with bow frieze drawers, brass drop handles, on square tapering legs with spade feet

**€60-€100**



**104.** Georgian mahogany card table with serpentine borders, fold-over top, gateleg support, on chamfered legs

**€150-€250**



**107.** Italian cased antique clarinet by Orsi of Milano

**€80-€150**



**110.** William IV oblong mahogany library or side table with rounded borders, two frieze drawers, scroll mounts and round finials, raised on tapering columns with scroll base, on oblong plinths with round feet

**€400-€600**



**105.** Edwardian inlaid mahogany sofa table with frieze drawers, stretcher and splayed feet

**€200-€300**



**108.** American School wall clock with circular brass framed dial by Ansonia Clock Company New York

**€100-€160**



**111.** Edwardian walnut hall or side table with serpentine shaped front, frieze drawer with drop handles, on cabriole legs with pad feet

**€100-€160**



**112.** Victorian copper helmet shaped coal scuttle with shaped handles and scoop

**€50-€80**



**113.** Assorted lot of brassware, etc in box

**€20-€40**



**114.** Edwardian style inlaid mahogany nest of three tables with ornate bird and string inlay, on inlaid tapering legs with stretchers

**€80-€150**



**115.** Victorian mahogany tea table with swivel fold over top, rounded corners, raised on turned tapering legs

**€150-€250**



**116.** Pair of Edwardian style oval two tier occasional tables with pierced gallery, bowed frieze drawer, shaped columns, on cabriole legs - one mahogany and the other walnut

**€250-€400**



**117.** Assorted lot of walking sticks with shaped handles

**€60-€100**



**118.** Three riding crops with shaped handles

**€60-€100**



**119.** Georgian style mahogany tea table with fold-over top, pull-out gateleg support, frieze drawer with brass drop handle, on square chamfered legs

**€100-€160**



**120.** Edwardian mahogany concave fronted corner display cabinet with dentil frieze, bowed doors with astragal glazing, shelved interior, shelved press under with panelled doors, escutcheons, on bracket feet

**€350-€500**





**121.** Edwardian style mahogany two tier book rack with rope edge borders, pierced dividers, on bamboo turned legs with stretchers

**€60-€100**



**124.** Victorian mahogany jardiniere stand with bowed rails, on turned column, on concave tripod with castors

**€120-€200**



**127.** Duck egg blue ground Iranian Kerman rug with floral decoration, 118 x 180cm

**€150-€200**



**122.** Mariner's brass and timber extending telescope on stand with adjustable base

**€40-€80**



**125.** Edwardian inlaid and crossbanded mahogany and walnut sofa table with lyre shaped dropped leaves, satinwood crossbanding, frieze drawers with brass drop handles, on columns, on scroll feet with brass castors

**€400-€800**



**128.** Art Deco style round bevelled glass beech framed mirror 106cm diameter

**€100-€150**



**123.** Ornate brass candle snuffers on shaped base

**€30-€50**



**126.** Edwardian design mahogany upholstered stool with cabriole legs

**€40-€80**



**129.** Victorian mahogany round lamp or wine table with raised border, vase turned column, on hipped tripod

**€40-€80**





**130.** Victorian mahogany three tier dumbwaiter with raised gallery, turned finials and rails, on castors  
**€200-€300**



**131.** Victorian mahogany and walnut wine cooler with angled sides, ornate oval brass drop handle, on square legs  
**€100-€150**



**132.** Pair of brass electric table lamps with reeded Corinthian columns and stepped bases  
**€30-€50**



**133.** Oblong wall mirror with foliate decorated frame  
**€60-€100**



**134.** Edwardian design demi lune hall or side table with string inlay, on square tapering legs  
**€100-€150**



**135.** Edwardian mahogany card table with fold-over top, reeded borders, gateleg support, on reeded tapering legs  
**€150-€250**



**136.** Victorian oak pembroke table with D-shaped drop leaves, gateleg support, barleytwist columns, and shaped stretchers  
**€60-€100**



**137.** French style ormolu hanging chandelier with S-shaped arms, and shaped sconces  
**€60-€100**



**138.** French style ormolu mantle clock with cherub and foliate decoration, circular enamel dial, and shaped base  
**€80-€150**



**139.** Edwardian inlaid and crossbanded mahogany envelope card table with swivel top, fold-out diamonds, baize playing surface, frieze drawer with brass drop handles, on inlaid tapering legs with applied collars

**€200-€300**



**142.** Victorian mahogany stick barometer with shaped pediment and round base by John Noida

**€200-€300**



**145.** Edwardian inlaid and crossbanded mahogany pembroke table with D-shaped drop leaves, frieze drawer with brass drop handles, pull-out supports, on inlaid square tapering legs with castors

**€200-€300**



**140.** French style serpentine fronted display cabinet with scroll decorated pediments, foliate inlay, shaped glazed doors with shelved interior, press under, on plinth

**€200-€400**



**143.** Edwardian style brass framed carriage clock with bevelled glass panels by David Petersen, England

**€60-€100**



**146.** Victorian style foot stool with upholstered top and cabriole legs

**€40-€80**



**141.** Edwardian mahogany pembroke table with drop leaves, rounded borders, swivel top, shaped legs with stretcher

**€60-€100**



**144.** Victorian copper helmet shaped coal scuttle with shaped handles and shovel

**€60-€100**



**147.** Waterford Crystal electric table lamp with baluster shaped shade and round bowl

**€80-€120**





**148.** Waterford Crystal round bowl with serrated borders

**€20-€40**



**151.** Victorian oak silver table with raised borders, shaped apron, on cabriole legs with pad feet

**€150-€250**



**154.** Victorian pole screen with ornate mother of pearl and foliate decorated adjustable screen, on gilt decorated stand, with tripod

**€100-€180**



**149.** Edwardian demi-lune hall or side table with reeded border, on reeded square tapering legs with spade feet

**€100-€160**



**152.** Ornate gilt framed wall mirror with beaded and scroll decoration 65x45cm

**€40-€80**



**155.** Mahogany card table with double fold-over top, gateleg support, shaped 'dog ear' corners, with baize lining and candle and counter wells, on cabriole legs with shell knuckles, scroll decoration and pad feet

**€500-€800**



**150.** Victorian mahogany chiffonier with shaped scroll decorated back, centre drawer and press, two side presses, on shaped plinth

**€100-€200**



**153.** Nine pieces of Mangers Ironstone 'Manderlay' pattern with ornate gilt and foliate decoration

**€20-€40**



**156.** Oblong Victorian style foot stool with foliate upholstery and cabriole legs

**€60-€100**



**157.** Oriental lacquered stationery box with ornate and foliate decoration

**€40-€80**



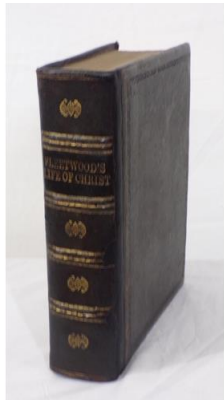
**160.** Dutch marquetry open cabinet with ornate ormolu mounts, foliate inlay, shaped shelf, on bracket feet

**€100-€200**



**163.** Pair of Oriental Famille Rose teapots with shaped spouts, lids and ornate foliate bird decoration

**€80-€150**



**158.** Leather bound volume 'Fleetwood's Life of Christ'

**€40-€80**



**161.** Edwardian mahogany cheval mirror with square tapering columns, on cabriole legs with castors

**€100-€200**



**164.** Edwardian design mahogany hall or side table with carved border, on cabriole legs with ball and claw feet

**€50-€80**



**159.** Italian style oval wall mirror with ornate decorated frame

**€60-€80**



**162.** Five piece carnival glass serving set

**€30-€50**



**165.** William IV style mahogany tea table with swivel fold-over top, raised on baluster turned column with collar, on concave base with bun feet

**€150-€250**





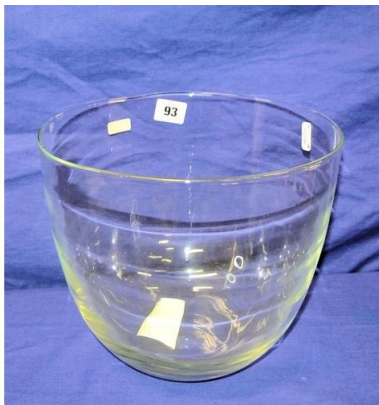
**166.** Victorian mahogany pembroke table with drop leaves, gateleg support, turned columns, on bracket feet

**€60-€100**



**167.** Waterford Crystal cut glass ships decanter with hobnail decoration and stopper

**€100-€150**



**168.** 'Leonardo' glass fruit or flower bowl

**€100-€150**



**169.** Red ground full pile Kashmir carpet with Aztec design

**€200-€300**



**170.** Edwardian mahogany bureau with fall-down front, pull-out supports, fitted interior, two short and three long drawers under with drop handles, on bracket feet.

**€100-€150**



**171.** Georgian crossbanded mahogany small chest on stand with pull-out shelf, four drawers with brass drop handles, pierced back plates and escutcheons, shaped apron, on cabriole legs

**€250-€400**



**172.** Ornate bronzed group - two hunting dogs with a hen, stamped PJ Mane 1847, on oval base

**€100-€200**



**173.** Art Deco figure of a bronzed dancing lady, with stamp 'J B Deposse', on stepped base

**€250-€400**



**174.** Edwardian walnut bow fronted press with reeded borders, two drawers with brass drop handles, pull-out shelf, presses under, on bracket feet

**€100-€200**



**175.** Edwardian inlaid mahogany demi-lune card table with fold-over top, gateleg support, baize surface, inlaid frieze, on inlaid square tapering legs with castors

**€100-€200**



**178.** Victorian style silverplated cruet set with six glass bottles and shaped handle

**€40-€80**



**181.** Multi coloured ground vintage Persian Tabriz carpet with floral medallion design

**€300-€500**



**176.** Victoria style cast iron garden vase with ribbed socles, shaped handles, on foliate decorated plinth

**€250-€400**



**179.** Edwardian design oblong bevelled glass wall mirror with ormolu mounts and inset glass panels

**€150-€200**



**182.** Pair of bronze Marly horses after Guillaume Costou, with grooms, on foliate decorated bases

**€250-€400**



**177.** Waterford Crystal round fruit or flower bowl with hobnail decoration

**€40-€80**



**180.** Edwardian mahogany sideboard with reeded borders, three central drawers, two side presses, round brass handles, on square tapering legs with spade feet. By C O'Connell & Co, Lavitts Quay, Cork

**€200-€300**



**183.** Pair of ornate bronzed electric lamps decorated with figure of girls reading, on shaped bases

**€40-€80**





**184.** Ornate gilt and ebony framed bevelled glass wall mirror with foliate decoration

**€60-€100**



**187.** Set of five Waterford Crystal stemmed wine glasses with diamond and faceted decoration

**€40-€80**



**190.** Edwardian mahogany chest of three drawers with hexagonal brass drop handles, on bracket feet

**€100-€200**



**185.** Edwardian inlaid mahogany bureau bookcase with astragal glazed door, shelved interior, fall-out front with pull-out supports, interior fitted with pigeon holes, four drawers under with brass drop handles, on bracket feet.

**€200-€300**



**188.** Set of six Galway Crystal cut glass stemmed wine glasses

**€20-€40**



**191.** Pair of wrought iron jardiniere stands with foliate and grapevine decoration, and shaped legs

**€100-€160**



**186.** William IV mahogany side table with frieze drawer, shaped columns and stretcher

**€140-€200**



**189.** Art Deco style "Globe" drinks trolley with ornate figured decoration, turned columns, on casters

**€150-€250**



**192.** Edwardian bevelled glass wall mirror with foliate frame

**€60-€100**



**193.** Brass 6 branch hanging light with S-shaped arms and shaped sconces

**€30-€50**



**196.** Full pile red ground Persian Kashan carpet with floral medallion design 290x200cm

**€400-€600**



**199.** Victorian mahogany round lamp or wine table with reeded raised border, reeded foliate decorated column, on hipped tripod

**€60-€100**



**194.** Edwardian hexagonal yew occasional table painted with portrait of a lady and foliage, on square tapering legs with ornate stretchers

**€150-€200**



**197.** Ornate bronzed electric table lamp with blue and white multi-coloured faceted shade

**€150-€250**



**200.** Victorian inlaid mahogany square centre or library table with reeded borders, round corners, raised on turned columns, on splayed quadrapod with brass capped toes and castors

**€250-€400**



**195.** Victorian mahogany display cabinet with ornate scroll decorated back, shaped bevelled mirror insets, glazed door with lined interior, shelving, side presses, brass drop handles, on cabriole legs

**€300-€500**



**198.** Ornate bronzed figured lamp "Cavalier", on round base

**€100-€200**



**201.** Edwardian inlaid and crossbanded mahogany and rosewood occasional or work table with rounded borders, sectioned interior, raised on inlaid square tapering legs with stretchers and castors

**€150-€250**





**202.** Waterford Crystal baluster shaped decanter, stopper and hobnail decoration

**€60-€100**



**203.** Waterford Crystal cut glass biscuitaire with lid and hobnail decoration

**€60-€100**



**204.** Edwardian style 'Mamas and Papas' rocking horse with leatherette saddle and shaped base

**€150-€250**



**205.** Victorian mahogany bow fronted chest of two short and two long drawers with bun handles, on turned legs

**€60-€100**



**206.** Large framed bevelled glass wall mirror with angled sides and mirrored frame

**€100-€200**



**207.** 10 pieces of gilt and foliate decorated Limoges

**€40-€80**



**208.** Meissen style cake plate with ornate foliate and bird decoration, with ormolu stand with shaped handle

**€20-€40**



**209.** Ornate bronzed Art Deco electric lamp with multi-coloured faceted shade

**€80-€150**



**210.** Nelson style mahogany sideboard with rope edge border, three drawers and four presses with reeded borders and brass drop handles, on turned legs

**€100-€200**



**211.** Victorian style bow fronted mahogany corner press with ribbon and scroll decoration, shelled interior

**€40-€80**



**212.** Victorian style bevelled glass wall mirror with foliate decorated frame

**€60-€100**



**213.** Oval gilt framed wall mirror

**€20-€40**



**214.** Edwardian design mahogany bookcase with adjustable shelving on plinth

**€40-€80**



**215.** Edwardian mahogany corner display cabinet with glazed door, shelled interior, shelled press under, on bracket feet

**€60-€100**



**216.** Pair of cast iron skillet pots with shaped handles and legs

**€40-€80**



**217.** Bronzed GAA 'Eire' plaque with shield shaped timber backplate

**€120-€200**



**218.** Regency design round gilt framed convex wall mirror

**€20-€40**



**219.** Arts & Crafts timber model of a horse

**€150-€250**





**220.** Victorian style mahogany three tier bookshelf with rounded sides

**€50-€100**



**221.** Red and blue ground vintage Iranian runner

**€120-€160**



**222.** Set of 6 Waterford crystal cut glass tumblers with faceted decoration

**€60-€100**



**223.** Waterford Crystal set of six cut glass Sherry glasses

**€60-€100**



**224.** Set of 6 Waterford crystal cut glass tumblers with strawberry diamonds

**€60-€100**



**225.** Edwardian mahogany twin pedestal dining table with reeded borders, two extra leaves inset, raised on baluster turned columns, on reeded quadrapods with lionclaw brass feet and castors

**€250-€400**



**226.** Art Deco hall mirror with bevelled decoration

**€30-€50**



**227.** Waterford Crystal cut glass tray with serpentine serrated edge and faceted decoration

**€40-€80**



**228.** Waterford Crystal desk clock with round brass framed dial

**€60-€100**



**229.** Pair of Waterford Crystal stemmed brandy goblets with diamond decoration

**€20-€40**



**230.** Georgian mahogany lowboy with 3 drawers, brass drop handles with shaped backplates, on cabriole legs with pad feet

**€200-€300**



**231.** Washed red ground hand woven Persian village rug with unique patterns

**€150-€250**



**232.** Waterford Crystal ewer with shaped handle and diamond decoration

**€40-€60**



**233.** Waterford crystal preserve jar with lid and shaped base

**€20-€30**



**234.** Set of six Waterford Crystal port glasses with strawberry diamond decoration

**€60-€100**



**235.** Set of six Waterford Crystal stemmed port glasses with diamond decoration

**€30-€50**



**236.** Set of five Waterford Crystal sherry glasses with diamond decoration and knob stems

**€30-€60**



**237.** Waterford Crystal round flower bowl with faceted decoration

**€40-€60**



**238.** Edwardian mahogany piano stool with adjustable leather lined seat, on cabriole legs

**€50-€80**





**239.** Edwardian inlaid mahogany upholstered stool with scroll arms, on square tapering legs

**€40-€80**



**242.** Art Deco style weathervane with toucan decoration

**€100-€160**



**245.** Ornate cast iron 3 piece patio set - round marble topped table and two armchairs

**€250-€400**



**240.** Edwardian inlaid and crossbanded nest of one long and two square tables with shaped reeded legs and stretchers

**€80-€150**



**243.** Sixty five piece Masons Ironstone 'Strathmore' design dinner service with ornate foliate decoration

**€300-€500**



**246.** Cast iron garden water pump with shaped handle

**€150-€250**



**241.** Art Deco bronzed electric lamp with ornate multi-coloured shade

**€150-€250**



**244.** Edwardian inlaid mahogany work or stationery table with lift-up lid, fitted interior, two drawers under with brass handles, on shaped tapering legs

**€60-€100**



**247.** Cast iron 3 tier garden planter with foliate decoration

**€60-€100**



**248.** Cast iron post box with lockable door

**€150-€250**



**251.** Small mahogany lamp or wine table with turned column on tripod

**€20-€40**



**254.** Edwardian brass oblong fire fender

**€60-€100**



**249.** Pair of Royal Doulton flower vases with foliate decoration

**€40-€60**



**252.** Two vintage pewter plates with shaped handles

**€30-€50**



**260.** Pears print, 'Study of a Victorian boy' 70 x48cm

**€30-€50**



**250.** Georgian mahogany oval wine cooler with brass banding, on stand with square tapering legs and castors

**€250-€400**



**253.** Edwardian style brass helmet shaped coal scuttle with shaped handle

**€80-€150**



**261.** Oriental School 'Study of an Oriental building with foliage' ink on cloth 38x46cm

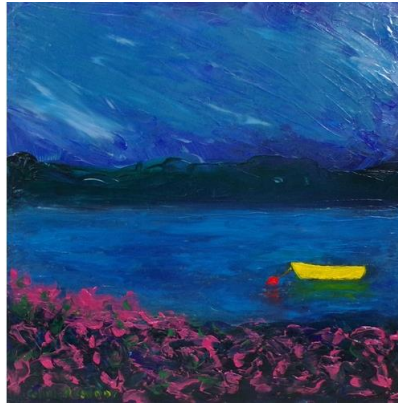
**€150-€200**





**262.** Peter Monamy 'Yachts of the Water Club of the Harbour of Cork' limited edition print 30x38cm

**€150-€250**



**265.** Cahill O'Connor 'Peaceful bay' oil on board 49x49cm signed

**€60-€100**



**268.** Irish school 'Dynamic Equilibrium' oil on board 55x40cm

**€100-€200**



**263.** Victorian style plaque with figures and angels, flowers in vases, in ornate gilt frame 50x24cm

**€250-€400**



**266.** Edwin Earp 'Extensive riverscape studies' pair of watercolours 22x55cm each signed

**€100-€200**



**269.** FA Webb 'Peaceful coastal scene' watercolour 43x68cm

**€100-€200**



**264.** Sir Alfred James Munnings 'Humorist and Donoghue' print 50x60cm

**€100-€200**



**267.** L.S. Lowry 'Northern River Scene' print 40x60cm

**€100-€200**



**270.** L. Dick 'Donkeys and ducks' watercolour 23x34cm signed

**€100-€150**



**271.** Roberta Scott 'Riverside castle' watercolour 23x28 signed

**€60-€100**



**272.** Irish School 'Sailing on a river' watercolour 35x50cm

**€40-€80**



**273.** J H Craig 'Irish scene' watercolour 17 x 24cm signed

**€150-€250**



**274.** Italian school 'Venice' watercolour 32x46cm signed

**€60-€100**



**275.** Ken Hayes 'Yachts racing offshore' watercolour 35x50cm signed

**€250-€400**



**276.** English school 'The Oxford cavalry protecting their beef' print 23x34cm

**€60-€100**



**277.** Kevin Platt 'Peaceful harbour scene' oil on board 45x90cm signed

**€100-€160**



**278.** Maritime school 'Choppy sea' oil on canvas 50x100cm signed indistinctly

**€80-€150**



**279.** James E Cooke 'Studies of birds in trees' pair of watercolours 28x22cm each signed

**€80-€150**



**280.** Harold Wyllie 'Study of a barque' etching 18x23cm signed

**€40-€80**





**281.** S Prout 'Study of figures in an old town' watercolour 14x10cm

**€100-€200**



**284.** After Giovanni Bellini 'Doge Loredano' oval 40x35cm

**€100-€200**



**287.** Fred Hines 'Feeding the doves' watercolour 26x36cm signed

**€80-€150**



**282.** W Hodges 'Portrait of a lady' Mezzotint 25x16cm signed

**€40-€80**



**285.** Ernest William Aldworth 'Hunting scene' pastels 20x34cm signed

**€60-€100**



**288.** James Campbell 'The Slide' watercolour with chalk highlights 20x30cm signed

**€100-€150**



**283.** Edward Williams 'Study of Cattle by a River' watercolour 36 x 26cm signed

**€50-€80**



**286.** Cahill O'Connor 'Mighty Cliffs' oil on canvas 80x76cm signed

**€100-€200**



**289.** Style of Bartholomew Coles Watkins, 'Study of Kerry mountains' pair of oils on board 20x30cm each

**€100-€200**



**290.** Victorian school 'Madonna and child' oil on canvas 65x70cm

**€200-€300**



**293.** Boris O'Klein 'Chacun son tour' coloured print 15x45cm signed

**€200-€300**



**296.** Holmes 'Study of a colourful verandah' oil on canvas 60x90cm signed

**€150-€250**



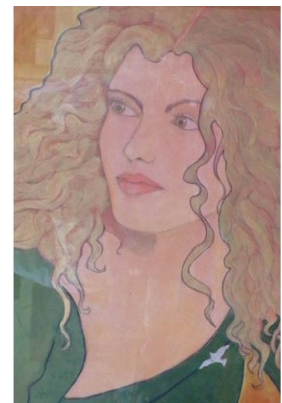
**291.** Watterson 'Boy playing on the beach' watercolour 38x27cm signed

**€100-€150**



**294.** Boris O'Klein 'Comme nos maitres' coloured print 20x45cm signed

**€200-€300**



**297.** A Young 'Study of a lady' pastels 80x56cm signed

**€100-€200**



**292.** Becker 'Riverside scene' oil on canvas 45x100cm signed

**€100-€200**



**295.** Boris O'Klein 'A la queue' coloured print 15x45cm signed

**€200-€300**



**298.** Vanity Fair pair of prints 'Ulster Man KC' and 'Chitty's Leader' 30x20cm each

**€100-€200**





**299.** Irish school 'Playing Hoops' print 48x74cm

**€40-€80**



**302.** John Cother Webb 'The benevolent sportsman' and After George Morland 'Figures outside an inn' coloured pair of mezzotints 36x46cm each signed and stamped

**€200-€300**



**305.** F G Archer 'Figure with moored currachs' oil on board 30x37cm signed

**€100-€200**



**300.** Irish school 'Woodland setting' watercolour 33x43cm

**€100-€200**



**303.** Cahill O'Connor 'West of Ireland' oil on canvas 40x50cm signed

**€80-€150**



**306.** Cecil Aldin 'The Glasgow coach' and 'The Liverpool coach' pair of prints 23x34cm each

**€80-€150**



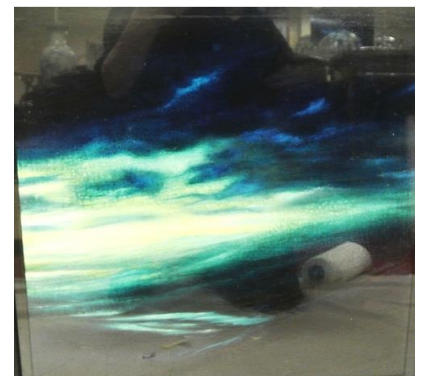
**301.** Mary Cassatt 'Sarah smiling' and 'Jeanette wearing her bonnet' colour dry point - a pair 16x22cm each

**€300-€500**



**304.** Ernest William Aldworth 'Hunting scene' pastels 24x32cm signed

**€60-€100**



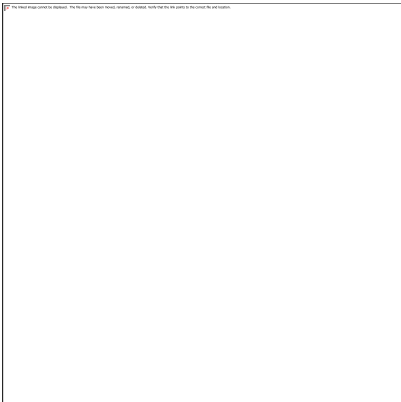
**307.** Jim Kavanagh 'Looking on' acrylics 43x44cm signed verso

**€250-€400**



**308.** Oriental school 'Shepherdess with goats' watercolour 62x137 signed and stamped

**€150-€250**



**309.** Cahill O'Connor 'Full moon' oil on canvas 90x90cm signed

**€150-€250**



**310.** African school 'Colourful abstract landscape' 36 x 36cm monogrammed

**€150-€200**



**311.** Cahill O'Connor 'Elements' 160x40cm signed

**€120-€180**



**312.** Cahill O'Connor 'Big red sun' oil on canvas 90x90cm signed

**€200-€400**



**323.** Pair of ornate cast iron garden benches with domed backs, foliate decoration, shaped sides and legs

**€1750-€2250**



**324.** Six piece Edwardian inlaid mahogany drawing room suite with inlaid oval backs, splats with musical and foliate inlay, with inlaid square tapering legs with spade feet, including two carver armchairs

**€500-€1000**



**325.** Set of eight Edwardian inlaid mahogany dining chairs with reeded bowed rails, foliate upholstery, on square tapering legs with stretchers

**€400-€800**



**326.** Set of 8 Chippendale style mahogany dining chairs with pierced splats, drop-in seats, on carved cabrile legs with claw on ball feet, including 2 carver armchairs

**€400-€800**





**327.** Edwardian mahogany seven piece drawing room suite with foliate carved pierced wheatsheaf splats, scroll and foliate carved top rails, serpentine fronted upholstered seats, and cabriole legs with castors

**€400-€800**



**328.** Pair of William IV mahogany hall chairs with pierced domed backs, serpentine fronted seats, on turned legs

**€100-€200**



**329.** Victorian mahogany tub armchair with scroll decorated pediment, shaped arms, pierced splats, serpentine fronted upholstered seat, on cabriole legs with pad feet

**€60-€100**



**330.** Coalbrookdale style cast iron garden bench with ornate figured and lily decoration, timber slats, on shaped legs

**€750-€1250**



**331.** Pair of Edwardian occasional chairs with railed backs, upholstered seats, on sabre legs

**€40-€80**



**332.** Pair of Victorian style balloonback occasional chairs with scroll decoration, serpentine fronted upholstered seats, on baluster turned legs

**€40-€80**



**333.** Queen Anne style mahogany occasional chair with vase shaped splat, drop-in seat, on cabriole legs with stretchers

**€40-€80**



**334.** Set of six Hepplewhite style mahogany dining chairs with pierced splats, leather drop-in seats, on cabriole legs with pad feet

**€300-€600**



**335.** Victorian mahogany hall chair with scroll and foliate decorated shaped back, on baluster turned legs

**€150-€200**



**336.** Victorian walnut ladies spoonback chair with foliate carving, buttoned upholstery, serpentine fronted seat, on cabriole legs with foliate decoration

**€60-€80**



**339.** Edwardian mahogany occasional chair with scroll decoration, pierced splat, upholstered striped seat, on shaped legs

**€30-€50**



**337.** Edwardian style occasional chair with foliate upholstery, on square legs

**€30-€60**



**340.** Victorian style Arts and Crafts oak chair with foliate carving, ring turned tapering legs

**€20-€40**



**338.** Pair of Georgian style mahogany carver armchairs with pierced wheatsheaf splats, leather seats, shaped arms, on square tapering legs with stretchers

**€50-€80**