

Est'd 1883

**WOODWARDS**

140 Years – 5 Generations



**FOUNDED 1883 – 5 GENERATIONS OF SUCCESS**

# Special Auction

**Antiques, Fine Art & Sculpture,  
Irish & English Silver  
Coins, Militaria, Etc**



**Saturday 23<sup>rd</sup> November**

**starting at 10am**



Joseph Woodward & Sons Ltd.  
Auction Rooms 26 Croft Street, Dublin 1.

[www.woodward.ie](http://www.woodward.ie)

€5

JOSEPH WOODWARD & SONS LTD

Founded 1883

# WOODWARDS

140<sup>+</sup> Years – 5 Generations

Over 140 years serving the people of Cork

Special Auction of Antiques,  
Fine Art & Sculpture,  
Irish & English Silver,

Saturday 23<sup>rd</sup> November 2024 at 10am

On View: Preceding Saturday & Sunday 2pm-4pm, Monday to Friday from 10am to 4pm

Full details and bidding at [www.woodward.ie](http://www.woodward.ie)

Live Bidding with



**SPECIAL AUCTION –**  
**ANTIQUES & FINE ART, COLLECTABLES,**  
RECENT ESTATES FROM BLACKROCK AND KINSALE  
JANUARY 18<sup>TH</sup> 2025 AT 11AM  
ENTRIES CAN BE ACCEPTED FROM JANUARY 6<sup>TH</sup>

## Paintings and Sculpture:

*When the Forename(s) and Surname of the Artist are given, in our opinion this is a work of the Artist.*

*When the Initials of the Forename(s) and the Surname of the Artist are given, in our opinion this is a work of the period of the Artist which may be wholly or partly his work.*

*When the Surname only of the Artist is given, in our opinion this is a work by the school, or by one of the followers of the artist, or in his style and of uncertain date.*

*Purchasers are allowed seven days from the date of the Auction to satisfy themselves as to the accuracy of the catalogue description.*

*Please note the Conditions of Sale as displayed in the Auction Rooms.*

*Estimates given are our opinion at the time and are subject to revision.*

## Collection of Purchases:

**All purchases can be collected from 10am-4pm Monday, Tuesday and Wednesday**

or be subject to a daily storage/insurance charge of €15 per day for furniture and €5 per day for other items.

Please note – no vehicular access to Cook Street from 11am.

Joseph **WOODWARD** & Sons, Ltd.

26, Cook Street, Cork

Tel: 021-427 3327 email: [auctions@woodward.ie](mailto:auctions@woodward.ie)

**A Family Business since 1883**

**[www.woodward.ie](http://www.woodward.ie)**



1. Assorted lot of trophy cups, etc., in box



2. Lot of silverplated items in box



3. Lot of trophy cups, etc., in box



4. Assorted lot of silverplated items, etc., in box



5. Assorted lot of cutlery, etc., in box



6. Large lot of assorted silverplated items, in box



7. Assorted lot of silverplated and pewter trophy tankards, etc., in box



8. Assorted lot of silverplated items, etc., in box



9. Assorted lot of silver & plated items in box



10. Lot: Scottish teaspoon, Birmingham silver oval brush and letter opener



11. Set of 6 Continental silverplated tea cup holders with shaped handles



12. Pair of silver plated entree dishes with shaped handles and Celtic decoration



13. Set of 12 silverplated knives and forks with foliate decorated handles



14. Pair of oval silver plated bread or sweet dishes with pierced reeded sides, wavy rims, on oval spreading bases



15. Pair of silverplated candleabrae with shaped arms and foliate decorated sconces and shaped bases



16. Victorian style silver plated cruet set with bottles, round holders, shaped handle and cast feet





- 17.** Pair of Sheffield silverplated 2 branch candelabrae with shaped arms, scroll & foliate decoration, on round bases



- 18.** Pair of continental silverplated berry spoons with Mother of Pearl handles, oval decorated bowls, in presentation case



- 19.** Pair of silverplated fish servers, ornately decorated, in presentation case



- 20.** 14-piece silverplated Hors d'Oeuvres set in fitted presentation case



- 21.** Silverplated cake stand with pierced and foliate decoration and swing handle



- 22.** Small silverplated entree dish with concave gadroon borders and detachable handle



- 23.** 24 piece Mother of Pearl handled canteen of cutlery in fitted presentation case



- 24.** Oval silver plated tray with foliate and pierced decoration, 505g



- 25.** Birmingham silver oil lamp with tinted glass bowl and shade, shaped column and stepped base



- 26.** Sheffield silver 3 piece carving set with shaped handles, in presentation case



- 27.** Birmingham silver pedestal bowl with shaped handles, on round spreading base



- 28.** Birmingham silver round vase with Celtic banding and shaped handles or round spreading base



- 29.** London silver sugar bowl and creamer with scroll decorated panels and wavy rims



- 30.** Small Birmingham silver baluster shaped cup with figured handle, on round base



- 31.** Silverplated crumb scoop with foliate etching



- 32.** Continental silverplated conserve spoon with ornate embossed cow milking scene and shaped hook handle



- 33.** Ornate silverplated cake basket with foliate decoration and shaped swing handle



- 34.** Set of 6 Sheffield silver teaspoons in presentation case, dated 1918, and 7 plated cased spoons



- 35.** 3 piece Birmingham silver condiment set with wavy rims and pad feet



- 36.** Pair of silver plated sauceboats with wavy rims, scroll handles, on hoof feet



- 37.** Set of 6 Sheffield silver handled art deco style knives in presentation case



- 38.** Pair of silver plated small candlesticks of round tapering form, with ribbon and oval decoration and ribbed rims. 16cm.



- 39.** Birmingham silver stationery or jewellery casket with shell corners and feet, inscribed



- 40.** Large London silver trophy cup with shaped handles, on round spreading base, dated 1923, 684g, 20cm diam.



- 41.** London silver jewellery or trinket box with timber lined interior, 593g



- 42.** Set of 6 Sheffield silver spoons with shell decorated handles, in presentation case



- 43.** Birmingham silver coffee pot of hexagonal baluster form, lid with finial, timber handle, on round base. 340g, 16cm h



- 44.** Four piece Birmingham silver tea service of oval baluster form with pierced rims, shaped handles, on cast feet



- 45.** Silver plated round tankard with thumbpiece and shaped handle



- 46.** London silver flower bowl with raised base and decorated rim, 1930, 239g, 14cm diam, inscribed



- 47.** Set of 6 Georgian silver coffee spoons with crested handles, in presentation case



- 48.** Pair of London silver oval salts with pierced angular sides, reeded rims and blue glass liners, in presentation case. Retailed by Rowland & Frazer, Regent St, London, 1898



- 49.** Sheffield silver rose bowl with shaped handles, wavy beaded rim, reeded sides, on round stepped base



- 50.** London silver rose bowl with floral and scroll decoration, two cartouches, raised on round base, 302g, 16cm diam



- 51.** 3 piece Sheffield silver tea service with panelled bodies, shaped handles, on round bases



- 52.** George III London silver oval sugar bowl with reeded rim and handles and reeded base, London 1799, 185g, L19cm



- 53.** Pair of Birmingham silver dwarf candlesticks with reeded decoration, on round bases



- 54.** Silver sugar caster with round base, and a Birmingham silver inkwell of square tapering form



- 55.** Large English silver photograph frame with shaped floral decorated border. 27x20 cm. To fit 18x13cm



- 56.** Small English silver photograph frame with floral decorated border. 14x11cm To fit 9x7cm



- 57.** Chester silver small bowl with reeded rim, inscribed 'Margaritta 5th & 21st March 1925' 49g 8.5cm diam



- 58.** 2 English silver sugar or ice cube tongs, one Georgian bright cut and one plain Victorian



- 59.** Georgian London silver basting or stuffing spoon with long fiddle pattern handle, 1810, 119g, 30cm



- 60.** Three Georgian London table spoons with crested Old English pattern handles, dated 1805, 1811 & 1820, 173g, 21cm





61. Victorian London silver fish slice with thread edge pierced blade and fiddle pattern handle, 1846,



62. Georgian London silver creamer with reeded rims and handles, floral etched banding, initialled, 122g, 12cm h



63. Persian silver peppercorn or nutmeg grater of round baluster form



64. Small Birmingham silver sugar or ice-cube tongs with shaped handles and shell nips



65. Persian silver round bowl with cover and shaped handles, ornately decorated.



66. 2 English silver creamers with wavy rims and shaped handles, Chester & Birmingham, total weight 123g



67. Birmingham silver baluster shaped creamer with wavy rim, shaped handle, on 3 cast feet, h11cm, 140g



68. Chester silver mug with shaped handle and reeded rim, h6.5cm, 98g



69. Pair of Birmingham silver round bon-bon dishes with decorated rims and pierced bodies, d10.5cm, 55g



70. Birmingham silver circular bowl with shaped handles, on circular spreading base, h9.5cm 116g



71. Assorted lot of silver items, napkin rings, bowls, etc



72. 'Jacksons Silver & Gold Marks' volume 2011



74. Wax seal and Masonic medal



75. Georgian London silver fish slice with pierced blade and fiddle pattern crested handle, dated 1810, 130g, 30cm



76. Pair of George IV London silver basting or stuffing spoons with long crested Old English handles, 1822, 223g, 31cm



- 77.** Birmingham silver sauceboat with wavy rim, shaped handle and pad feet, 168g, 18cm



- 78.** Birmingham silver dressing table bowl with pierced decoration, on round base, 78g, 10cm diam



- 79.** Scottish silver soup ladle with crested Old English pattern handle and round bowl, Edinburgh 1798, 153g, 35cm



- 80.** Scottish silver tablespoon with crested fiddle pattern handle, 37g, 18cm



- 81.** Scottish silver sugar or ice-cube tongs with shell grips, by Wm Russell, Glasgow 1835



- 82.** Pair of Birmingham silver stemmed vases with pierced and foliate decoration, on round bases 163g, H11cm



- 83.** Guess Ladies watch with iridescent plain face, in box



- 84.** Pair of boat shaped silver plated sauceboats with Celtic design rims, S-scroll handles and hoof feet



- 85.** Small London silver photograph frame with oval ope and ornate embossed decoration. H9 X 8CM



- 86.** Birmingham silver cased pocket watch with seconds dial, in ornate silver case



- 87.** Set of 12 Victorian London silver teaspoons with Kings pattern handles, 398g, 14.5cm



- 88.** London Queen Anne silver rat-tail serving spoon by W Penstone, 1712, 30.5cm, 124g



- 90.** Birmingham silver dish ring with ribbon and reeded decoration, blue glass liner, dated 1912, 307g, 20cm diam



- 92.** Pair of Irish Victorian silver salt spoons with crested fiddle pattern handles and oval bowls, Dublin 1825 16g



- 93.** Irish silver dinner fork with fiddle pattern handle, by James Le Bas, Dublin, 1843, 74g, 21cm





- 94.** Pair of Irish silver mustard or egg spoons with fiddle pattern crested handles and oval bowls, by Christopher Cummins, Dublin 1849, 31g



- 95.** Irish Georgian sugar nips with foliate decoration 38g, 13cm



- 96.** Pair of Irish silver teaspoons with fiddle pattern handles, by Richard Sawyer, Dublin 1811/12. 36g, 14.5cm



- 97.** Pair of Irish silver salt spoons with crested fiddle pattern handles, by Philip Weekes, Dublin 1819, and a pair of Irish silver salt spoons dated 1847 (4). 90g, 10cm



- 98.** Irish George III silver dessert spoon with fiddle pattern crested handle, by Samuel Neville, Dublin 1814. 29g, 17cm



- 99.** Large George V Sheffield silver serving tray with shell and gadroon borders, shaped handles, foliate etching, 1910, 2775g, w65cm



- 100** Irish silver sugar bowl with reeded rim, embossed with frit and wavy reeding, shell knuckles and stepped feet, with Sword of Light hallmark for 1966, Makers mark 'JW'



- 101** Irish silver bowl with wavy rim, central band, on round raised base, by Royal Irish Silver, Dublin 1970, 281g, 11.5cm diam



- 102** Irish silver ladle with long Old English pattern crested handle, round bowl, by John Power, Dublin 1806, 196g, 36cm



- 103** Irish silver round wine bottle coaster with timber base, Dublin 1993



- 104** Pair of Irish silver teaspoons with crested handles by John Bolland, Dublin 1800, 55g, 17cm



- 105** Irish silver rat-tail tablespoon by William Egan & Sons, Cork 1984, 84g, 21cm



- 106** Irish silver teapot of  
 . round form with  
 reeded finial and lid,  
 acanthus leaf rim,  
 reeded lower body,  
 shaped handle and  
 spout, on round raised  
 base, by James Scott,  
 Dublin 1830, H19cm



- 107** Irish silver dessert  
 . spoon with fiddle  
 pattern crested  
 handle, by Richard  
 Sawyer, Dublin 1810,  
 stamped 'Henderson'  
 28g /17cm



- 108** Irish silver small  
 . strawberry dish with  
 wavy scalloped  
 border, by George  
 Bellew, Dublin,  
 having 'Sword of  
 Light'  
 commemorative  
 hallmark for 1966  
 .93g/D13cm



- 109** Irish silver fish slice  
 . with fiddle pattern  
 handle, pierced fish  
 and foliate decorated  
 blade, by George  
 Nagle, Dublin 1806,  
 127g, 30cm



- 110** Irish Silver serving  
 . spoon with bright cut  
 crested pointed  
 handle, by Michael  
 Keating, Dublin 1792,  
 70g, 23cm



- 111** Irish Silver serving  
 . spoon with bright cut  
 crested pointed  
 handle, by Michael  
 Keating, Dublin 1795,  
 75g, 24cm



- 112** Irish silver sauce  
 . ladle with bright cut  
 shaped crested handle  
 and oval bowl, by  
 Robert W Smith,  
 Dublin 1838, 74g  
 19cm



- 113** Irish silver serving  
 . spoon with Kings  
 Pattern crested  
 handle, by James Le  
 Bas, Dublin 1835,  
 100g, 23cm



- 114** Oriental metal spear  
 . head 48cm and an  
 Indian dagger 27cm



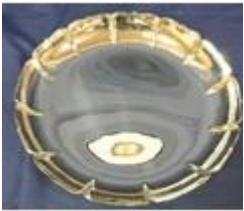
- 115** Irish provincial  
 . teaspoon with fiddle  
 pattern handle  
 stamped 'Sterling' and  
 a similar teaspoon  
 stamped 'Sterling' 30g



- 116** Irish Provincial Silver  
 . boat shaped sauceboat  
 decorated with birds,  
 scrolls, swags and  
 cartouche, S-scroll  
 handle and on 3  
 shaped feet, by  
 William Egan &  
 Sons, Cork 1974.  
 181g /H8 17X8cm



- 117** Irish silver salver or waiter with raised shaped rim, with 'Professional Golfers Association' crest, and inscribed 'Irish Region Mr John A Mulcahy, Honorary Life Patron, Presented 1987' Dublin 1985, 153g, 15.5 diam



- 119** Irish silver strawberry dish with wavy scalloped rim, by Wm Egan & Sons, Cork with Sword of Light commemorative hallmark for 1966



- 120** Irish silver potato or dish ring of round waisted form, pierced and with ribbons and swags, Dublin 1922, 248g, 20cm d



- 121** Irish silver teapot of ball form, lid with marble finial, shaped spout and timber handle, foliate chasing, on round stepped base, by Royal Irish Silver Ltd, Dublin 1968, 750g, 16cm h



- 122** Cork silver tumbler or pain round tapering form, by William Egan & Sons, Cork, having 'Sword of Light' commemorative hallmark for 1966



- 123** Pair of Irish silver round pin trays with gadroon rims, by William Egan & Sons Ltd, Cork 1983, 85g, 8cm diam



- 124** Cork silver small ladle with bright cut handle and round bowl, by Carden Terry, Cork c.1790, stamped 'STERLING', 19cm



- 125** Cork George III silver small sauce ladle with fiddle pattern crested handle and round bowl, stamped 'STERLING', 15cm



- 126** Cork silver tea spoon with crested fiddle pattern handle, by William Reynolds c 1780, stamped 'STER' 15cm 18g



- 127** Irish silver circular sugar bowl with wavy edge and beaded rim, on tripod shell headed hoof feet, by William Egan & Sons Cork, 1977, 174g, 11cm diameter



- 128** Irish silver fish slice with pierced blade, crested fiddle pattern handle by James Scott, Dublin 1822, 30cm, 142g





- 129** Irish silver small  
 . sauceboat, ornately embossed with scrolls and foliage, with S-shaped handle and hoof feet, possibly by Anthony Semiro, Cork c 1750. 12cm, 94g



- 130** Irish silver fish slice  
 . with fiddle pattern handle and pierced blade, by Philip Weekes, Dublin 1869,



- 131** Irish silver bon bon  
 . dish with shaped borders, ornate pierced decoration, bearing Gleninsheen Collar hallmark, by Royal Irish Silver, Dublin 1973, 96g, 14cm diam



- 132** Irish silver  
 . presentation spoon with initialed fiddle pattern handle, by Samuel Neville, Dublin 1833. 19cm, 56g



- 133** Irish silver bright cut  
 . sugar tongs by Thomas Farnett, Dublin c. 1826. 13.5cm



- 134** Irish silver ice cube or  
 . sugar tongs with plain fiddle pattern handles and oval grips, by George Nagle, Dublin 1788-1809. 41g/15cm



- 135** Irish George III silver  
 . ice cube or sugar tongs with shell grips, by Samuel Neville, Dublin c. 1800. 14.5cm, 30g



- 136** Victorian Irish silver  
 . tablespoon with fiddle pattern crested handle, dated 1845, by Philip Weekes, Dublin 1820, 90g



- 137** Pair of Irish silver  
 . mustard spoons by Samuel Neville, Dublin 1818, 105mm



- 138** Cork silver butter  
 . knife with bright cut blade and crested fiddle pattern handle, by Richard Garde, Cork 1827



- 139** Irish silver sherry  
 . label by Benjamin Tait, Dublin, 1790, 55mm



- 140** Irish silver 'Madeira'  
 . Sherry label by Benjamin Tait, Dublin 1784, 47mm



- 141** Irish silver Celtic  
 . Brooch by P Archer, Cork 1962, 5cm



- 142** Irish silver Claddagh  
 . brooch by P Archer,  
 Cork 1955



- 143** Padraig Pearse  
 . commemorative coin  
 for 1966, and Copy of  
 his biography by Ruth  
 Dudley Edwards



- 144** Set of 6 Irish silver  
 . dessert spoons with  
 bright cut handles, by  
 Richard Sawyer,  
 Dublin 1809, 117g,



- 145** Cork silver  
 . tablespoon with rat-  
 tail crested handle, by  
 George Hodder  
 c1745, 60g, 22cm  
 stamped 'STERLING'



- 146** Set of 7 Irish silver  
 . dinner forks with  
 crested fiddle pattern  
 handles, by Richard  
 Garde, 1831, 481g,  
 24cm



- 147** Irish silver bon bon  
 . dish with pierced  
 decoration, inscribed,  
 by Cyril O'Mahony,  
 Cork 1997, 95g,  
 14.5cm



- 148** Cork silver cream jug  
 . with shaped handle  
 and foliate etching, by  
 Samuel Green, Cork  
 c. 1790, 155g,



- 149** Irish silver cream jug  
 . of oval tapering form  
 with concave corners,  
 shaped handle, with  
 bright cut decoration,  
 on oval spreading  
 base, by Joseph  
 Jackson, Dublin 1801,  
 210g,



- 150** Irish silver swing  
 . handled sugar basket  
 with reeded swing  
 handle, reeded rim,  
 foliate decoration and  
 crested cartouche, on  
 oval spreading base,  
 by Robert Smyth  
 Dublin 1809, 431g,  
 195mm



- 151** Irish silver sugar or  
 . ice cube tongs with  
 bright-cut edges and  
 shell nips, crested, by  
 Benjamin Tait,  
 Dublin 1790



- 155** Irish Provincial Silver
- Freedom Box of round oblong form, with applied Cork Coat of Arms on the lid, the border engraved with ribbon of acorns, oak leaves and roundels. The base inscribed 'The Freedom at large of the City of Cork presented by the Major, Sheriff and Common Council to Admiral Thornborough, Commander in Chief in the Irish station, in testimony of his great attention to the trade of Ireland & particularly of this city, Paul Maylor, Mayor, Rob Deane & Jonathan Bernard, Sheriffs, & W Jones, T Clerk.' by Kean Mahony of Cork, Dublin hallmarks for 1808.



- 157** 56 piece canteen of
- Irish silver cutlery with thread edge handles, by Irish Silver Ltd, Dublin, with Gleninsheen Collar hallmarks for 1966



- 158** Set of 5 Cork silver
- Ice cream spoons with oval shallow bowls and plain Old Irish handles, by William Egan and & Sons Ltd, Cork, with Dublin Gleninsheen hallmarks for 1966



- 159** Michael Collins gold
- proof commemorative €20 coin in box



- 160** The complete
- collection of US Walking Liberty Half-Dollars, in presentation case Total 25 Years 1916-1947 (circulated )



- 161** A century of 19 US
- Silver Coins in Display Case Barber Dime ,Quarter, and Half Dollar. Morgan Dollar ,Mercury Dime, Standing Liberty Quarter, Pease Dollar, Walking Liberty Half Dollar, Franklin Half Dollar. Roosevelt Dime, Jefferson Nickel, Washington Quarter and Bicentennial Quarter, Eisenhower Dollar and Bicentennial Dollar, Kennedy Half Dollar 1964 1967, 1776-1976, US Eagle,





- 162** US Uncirculated
- Morgan Silver Dollars and Peace Dollars. 1882, 85,86,87,88,89,90,97, 98,99.1900,1902 1923,1924,1925. Peace Silver Dollar 1922, Morgan last year of Issue 1921.



- 163** US Never-circulated
- Presidential Dollars, 45 single and 39 Presidential Dollar Rolls, each roll contains 12 Dollars in wooden display case



- 164** US State Quarters
- Single and Quarter Rolls (of 12) Uncirculated, in Display Chest



- 165** British Coins of
- World War II, 1939-1945, in display case



- 166** Danbury Mint
- collection of 8 coins "The Worlds Purest Silver Coins" in display case. Canadian Maple leaf 5 Dollars 2015, US Silver Eagle 2015 5 Dollars, Austria 2015 1,50 euro, Elizabeth II 2016 commemorative China 2015 Panda, Mexico winged victory commemorative 'Fiji turtle commemorative, Australian 2017 1 Dollar.



- 167** Auk collection -
- Scotland 20 Pattern Coinage 2014, Framed Coins of the Realm 500 years of British Monarchy, Diana 1961-1997 The Queens Diamond Jubilee Collection. Great Britain farewell to £.s.d .Edward VII 1936 Coin set. UK £1 Silver pound



- 168** Dublin Mint
- collection - Coins of Irish Free State, President Barack Obama 'Millennium £1 coin, Papal visit to Ireland John Paul II, Changing face of Irish coinage set.



- 169** US Coins: US State
- Quarters series II, 38 states, JFK Coin - package collection x2 US Mint state Quarter proof set, collection of commemorative and US circulated coins



- 170** Dublin mint
- collection: O'Donovan Rossa commemorative coin,1916 proclamation commemorative, The seven signatories of Irish proclamation commemorative



- 171** UK Collection of various commemorative coins etc. First World War, Queen Elizabeth various commemorative years, King George VI 1937-1952 Set, The five Crown collection, The Queens Diamond Collection etc.



- 172** The Hendon Album of World collectable Notes - inc The Jacobs Club Collectors Book, The One Million Movie Note 1954. Over 250 Notes etc + Small collection of Irish notes



- 173** Coin Collection: Central Bank Michael Collins £20 gold proof coin, The Irish Hard 2013 and Animals of Irish coinage 2012 collection, Dublin Mint Hibernia 2013 coin, D-Day 70th Anniversary coin, Irish circulated coins in bag



- 174** Large collection of circulated world coins and commemorative sets.



- 175** Collection of circulated World coins and Canadian Tiny Treasures 2001



- 176** World Stamp Album and Coin Album of Roman Coins



- 177** Assorted lot of Jewellery, rings, chains etc



- 178** Jacobite letters to Lord Pitsligo 1745-1746 by Milne and Hutchison Aberdeen 1930, Hard Cover some binding issues, water damage to cover spine, inside cover signed James O'Regan from Eoin O'Mahony 30 January 1948, also with post card from Eoin O'Mahony to James O'Regan dated 1953.



- 179** Timothy Richards 'Jane Austens House' in presentation box



- 180** John Woodfull 'Lahinch' & 'Portrush' 2 Golfing prints, 37x50cm each



- 181** John Woodfull  
 . 'Tralee' &  
 'Ballybunion' 2  
 Golfing prints,  
 37x49cm each



- 188** Sir William Russell  
 . Flint 'Lady in repose'  
 limited edition,  
 26x37cm studio  
 stamp



- 182** John Woodfull  
 . 'Portmarnock' &  
 'Royal County Down'  
 2 Golfing prints,  
 37x49cm each



- 189** Irish school 'View of  
 . a rocky shoreline'  
 watercolour 50x34cm



- 183** Arthur Sarnoff 'Dogs  
 . playing pool' set of 4  
 prints, 35x45cm each



- 190** Norman Teeling  
 . 'O'Connell St' print  
 29x39cm signed



- 184** Pietro Annigoni  
 . "Christina" coloured  
 print 48x32cm



- 191** Robert Loew  
 . Stopford 'Looking to  
 Blackrock' print  
 23x34cm



- 185** Irish school 'Lake  
 . scene' oil on canvas  
 35x50cm, initialled  
 'MB'



- 192** English school 'Still  
 . life studies' a pair of  
 oils on canvas,  
 61x61cm each



- 186** Victorian school  
 . "Church interior"  
 print 75x55cm



- 193** Tony O'Connell  
 . 'Hook Head  
 lighthouse'  
 photographic print  
 20x44cm signed



- 187** Irish school 'Study of  
 . woods by a river'  
 watercolour initialled  
 W.H.S. 50x33cm



- 194** Ken Hayes 'Sailing'  
 . watercolour, 26x33cm  
 , signed



- 195** English school 'Still  
 . life studies' a pair of  
 oils on canvas,  
 50x50cm each





- 196** Victorian maritime school 'HMS Chesapeake Homeward Bound' oil on board 37x51cm



- 204** Ornate allegorical  
 . bronzed figure of a lady and child, on shaped base



- 197** Irish school 'Still life studies' a pair of oils on canvas, 50x50cm each



- 205** Victorian style  
 . bronzed group 'Hounds' on shaped base, 47cm width



- 198** Deirdre Thompson  
 . 'Country lane with cottages' oil on canvas 25x35cm signed



- 206** Georgian style  
 . bronzed sculpture of a Jaguar 41cm long



- 199** Neil Kelleher 'Old Cork Opera House' watercolour 49x74cm signed



- 207** Le Bao 'Female form' statuette 37cm, on square base, signed



- 200** John Behan RHA  
 . 'Birds in flight' bronze sculpture on square granite base, 100 x 63 x 40cm (inc base)



- 208** Art deco bronzed statue 'Family' 48cm high



- 201** John Behan RHA  
 . 'Queen Maeve' bronze sculpture 34cm, on granite base, signed



- 209** Ornate bronzed ornament of a boy with turtles on hexagonal base



- 203** Marie Doyle Bronze sculpture 'Hands holding' 25cm, on square marble base, signed



- 210** Irish school 'Study of a lady' oil on canvas 80x60cm



- 211** Robert L Stopford  
 . 'Lough Mahon' & 'Glenbrook Baths' pair of etchings 20x31cm each



- 212** A Burla 'City scene with cathedral' oil on canvas 60x80cm signed



- 219** B Daltan 'Cork lane' oil on canvas, 47x22cm, signed and dated '68



- 213** After Sir David Wilkie RA 'Sketch of 5 young ladies' pencil, 17x19cm



- 220** J P Rooney 'By the mackerel crowded sea' oil on board, 88x88cm, signed



- 214** John C Bosanquet 'The Old Houses at Worlds End' watercolour, 27x37cm signed and dated 1871, inscribed



- 222** JP Rooney 'Fisherfolk and boats' oil on board 36x73cm, signed



- 215** Gretta O'Brien 'Colourful abstract' oil on canvas, 66x50cm, signed



- 223** Norah McGuinness HRHA 'Fishers Quay, Youghal' watercolour, 27x38cm, signed



- 216** Aideen McNamara 'Looking to the Skeligs' oil on canvas 49x59cm signed



- 224** Mary E Barrett 'Rooftops' oil on canvas, 30x70cm, signed



- 217** Terence Attridge Williams 'Still life' oil on board, 29x39cm, signed



- 225** Holgar Pederson 'The Fish Quay' oil on canvas 64x90cm signed



- 218** Desmond Hickey 'Galway hooker' oil on board, 26x26cm, signed



- 226** English school 'Portrait of a girl' oil on canvas 90x60cm



- 227** After Pieter de Hooch  
 . 'Figures by a porch'  
 oil on board,  
 47x36cm, signed



- 235** H W Critchley  
 . 'Riverside scene' oil  
 on canvas 50x60cm  
 signed



- 228** Morris Katz 'Wailing  
 Wall' palette knife on  
 board, 40x50cm,  
 signed lower right &  
 dated 1988



- 236** Sean O'Connor  
 . 'Caragh river at  
 Lickeen' oil on board  
 48 x 59cm signed



- 229** Morris Katz 'Figures  
 in junk boat' palette  
 knife on board,  
 40x50cm, signed



- 237** 3 miniature paintings:  
 . 'lady' and 2 scenes



- 230** Studio of Jacob  
 . Jordaens (Antwerp  
 1593-1678) 'Satyr &  
 peasant', chalk on  
 paper, 42x52cm



- 238** Pair of miniature  
 . portraits of an officer  
 and a lady, oval  
 6.5cm



- 231** Ken Hayes 'Sailing'  
 . watercolour,  
 26x33cm, signed



- 241** Edwardian style brass  
 . electric lamp with  
 corinthian column  
 and stepped base



- 232** J McElwee 'Hayfield'  
 . oil on canvas,  
 34x30cm, signed



- 242** Bayard 8-day French  
 . brass carriage clock  
 with bevelled glass  
 panes and shaped  
 handle



- 233** Saxton/Kip 'Map of  
 . Cardigan Bay' c.  
 1637, 26x31cm



- 243** Irish War of  
 . Independence Medal  
 (un named) 'Cogadh  
 na Saoirse' 1917-  
 1921, missing ribbon



- 234** Henry Morgan 'Cork  
 . Harbour Light House'  
 engraving 20x30cm





- 244** Pair of Oriental blue & white small rice bowls with foliate decoration, 6.5cm d



- 251** Assorted lot of frames. etc in box



- 245** Pair of Victorian style opera glasses with adjustable wheel



- 252** 2 Vintage leather cases with leather straps



- 246** Partial set of 32 French playing cards and 7 Chinese Mother of Pearl gaming counters c 1800



- 253** Rare Irish Army Vickers Helmet complete with shield attachments, The liner is present but missing one chin strap attachment. No factory markings are clearly visible due to white paint that covers it



- 247** Sevres celeste blue chocolate cup and cover with figured and gilt decoration, shaped handles, and matching plate



- 248** Two Bat printed cups and one saucer with scenic and bull decoration



- 254** Rare Irish Army Vickers Helmet with shield attachments, chin strap and liner. Factory markings are not clearly visible due to white paint that covers it.



- 249** Round Wedgwood biscuit jar with figured and foliate decoration in relief, with plated lid



- 255** Brodie Helment with leather liner and chin strap covered in dark paint with the letter R named to B Mc Cormack



- 250** Assorted lot of glassware, etc. in box



- 256** A pair of Irish Army Brodie helmets, light green paint scuffs and spots, missing liner



- 257** Pair of Irish Army  
 . Brodie helmets light green paint scuffs and spots, no liner



- 258** Irish Emergency  
 . Medal "An Forsa Cosanta Aituil" one bar 1939-1946



- 259** Irish Emergency  
 . Medal "Na Forsa Cosanta" 1939-1946 with one extra Bar for service



- 260** 2 UN medals for  
 . service



- 261** Edwardian walnut  
 . locker with panelled door & shelved interior



- 262** Decorated Vickers  
 . sewing machine in oak case



- 263** Serpentine fronted  
 . mahogany small chest of four drawers with drop handles, on cabriole legs with pad feet



- 264** Edwardian round  
 . occasional table with leatherette inset, frieze drawers, turned column, on reeded tripod



- 265** Edwardian design  
 . inlaid yew bookshelf with 2 frieze drawers, brass drop handles, adjustable shelving, on bracket feet



- 266** Edwardian design  
 . bedside table with open top, frieze drawer with drop handle, chamfered legs with stretchers



- 267** Pair of Victorian style  
 . earthenware ewers with figured & foliate decoration



- 268** Set of 3 Regency  
 . style gilded pelmets with ornate scroll, shell & foliate decoration H40 /30cm X 210 X 30 cm



- 269** 3 Regency style gilt  
 . pelmets with egg & dart, scroll & foliate decoration H38 X 128 X D22cm



- 270** Inlaid yew bookshelf  
 . with 2 frieze drawers, drop handles, adjustable shelving, on bracket feet



- 271** Mahogany cabinet  
 . with pull-out shelf,  
 glazed doors, drawer  
 under, on bun feet



- 272** Washed red ground  
 . full pile Iranian  
 village runner.310  
 x102cm



- 273** Ornate Regency  
 . design gilt 3 tier  
 serpentine fronted  
 wall shelf with ornate  
 fern & foliate  
 decoration



- 274** Regency design  
 . serpentine fronted  
 hall or console table  
 with reeded frieze,  
 turned reeded  
 tapering legs



- 275** Victorian style oblong  
 . occasional or side  
 table with glass inset,  
 ornate foliate carved  
 apron, shaped  
 stretcher, on cabriole  
 legs



- 276** Oblong Pine side or  
 . television cabinet  
 with panelled doors,  
 shelved interior, on  
 bracket feet



- 277** Victorian design five  
 . tier serpentine fronted  
 whatnot with pierced  
 pediment, turned rails  
 and finials, on turned  
 legs



- 278** Vintage cast iron  
 . Salter weighing scales  
 with basket



- 279** Vintage timber wine  
 . box with sectioned  
 interior & handles



- 280** Edwardian design  
 . oblong desk with  
 leatherette inset, two  
 drawers with drop  
 handles, shaped  
 columns & turned  
 stretcher, reeded  
 splayed legs with  
 brass lionclaw feet



- 281** Pair of Edwardian  
 . design bedside  
 mahogany bedside  
 tables with open tops,  
 frieze drawers with  
 brass drop handles, on  
 chamfered legs with  
 stretchers



- 282** Pair of Cantonese  
 . baluster shaped vases  
 converted to lamps,  
 with ornate figured  
 gilt & floral  
 decoration



- 283** Pair of Adams Calyx  
 . ware baluster shaped  
 ewers with foliate  
 decoration





- 285** Edwardian mahogany  
 . serpentine fronted hall or console table with bowed frieze drawer, twist columns, on shaped plinth



- 286** Edwardian style wine  
 . or occasional table with tip-up top, turned column & quadrapod



- 287** 2 rich red ground full  
 . pile Afghan Tubi runners with bespoke Bokhara design. 150 x54 cm each



- 288** Edwardian mahogany  
 . triple mirror folding mirror with domed tops, shaped finials, on bracket feet



- 289** Round Victorian  
 . mahogany occasional table with tip-up top, barleytwist vase shaped column, on hipped tripod with pad feet



- 290** French Empire style  
 . oval inlaid and crossbanded walnut centre or occasional table with ebony banding, raised on four gilt decorated reeded columns, circular plinth, on inlaid scroll legs with castors



- 291** Edwardian oblong  
 . mahogany 2 tier occasional or coffee table with turned columns & tapering legs



- 292** Pair of brass standard  
 . electric lamps with reeded Corinthian columns & stepped bases



- 293** Pair of Victorian style  
 . brass candlesticks with shaped bases



- 294** Pair of vintage Great  
 . Western Railways brass carriage lamps



- 295** Edwardian mahogany  
 . bookcase with astragal glazed doors, shelved interior, dentil frieze, on bracket feet



- 296** Edwardian inlaid &  
 . crossbanded mahogany side or sewing table with frieze drawer, fitted interior, brass drop handles, on inlaid square tapering legs with stretchers



- 297** Terracotta ground full  
 . pile Persian hamadan runner with unique al over floral pattern



- 298** Victorian style triple plate rack with shaped handle



- 299** Mahogany standard coat & hat rack with S-shaped hangers & shaped base



- 300** Victorian mahogany oblong occasional or side table with frieze drawer, round handles, turned tapering legs with castors



- 301** Edwardian style inlaid yew side table with angled sides, frieze drawer, turned column, on hipped tripod



- 302** Edwardian style mantle clock with angled top, round enamel dial, painted glazed door, on plinth



- 303** Edwardian mahogany framed heart shaped bevelled swivel mirror with shaped columns, on bracket feet



- 304** Victorian design round occasional or coffee table with cabriole legs, claw on ball feet



- 305** Victorian mahogany & walnut bow fronted chest of 2 short & 3 long drawers with bun handles, on ball feet



- 306** Large Regency design gilt framed bevelled wall mirror with ornate foliate & scroll decoration



- 307** 5 assorted Belleek vases with foliate decoration, in box



- 308** Pair of Karlsbad round plaques with ornate figured & foliate decoration



- 309** Edwardian inlaid mahogany demi lune hall or side table with string inlay on square tapering legs with spade feet



- 310** Edwardian inlaid satinwood and walnut hall or side table with serpentine shaped top, double shaped frieze drawers, shell decorated knuckles, on shaped cabriole legs



- 311** Edwardian inlaid  
 . mahogany 2 tier kidney shaped occasional table with inlaid tapering legs & stretchers



- 312** Full pile fine woven  
 . red ground bamboo silk carpet with traditional floral design. 230 x 160 cm



- 313** Ornate Edwardian  
 . inlaid rosewood writing slope with ornate mother of pearl inlay, herringbone borders, & fitted interior



- 314** Edwardian inlaid  
 . walnut jewellery or stationery box with ornate inlay & lined interior



- 315** Victorian walnut &  
 . mahogany hall or side table with concave front, drawers with ornate brass drop handles, on turned tapering legs



- 316** Oriental style  
 . mahogany nest of 4 tables of graduating sizes, shaped legs with stretchers



- 317** Queen Anne  
 . mahogany wall mirror with gilt & foliate decoration



- 318** Edwardian style wall  
 . display cabinet with glazed doors & shelving



- 319** Victorian mahogany  
 . Vienna wall clock with brass framed enamel & brass face, enamel pendulum, reeded columns, & shaped finials



- 320** Walnut cased display  
 . cabinet with glazed doors & shelving, on bracket feet



- 321** Victorian oak  
 . bijouterie table with hexagonal shaped top, bevelled glass insets, & reeded tapering legs with stretchers



- 322** Ornate brass electric  
 . table lamp with reeded & figured foliate decorated column, on round stepped base



- 323** Art Deco style  
 . butterfly lamp with panelled & foliate decoration



- 324** Rich red ground  
 . Kashmir carpet, full pile with Persian panel design. 310 x 190cm





- 325** Victorian inlaid  
 . mahogany occasional or side table with satin & ebony string inlay, on turned tapering legs ( old repair to leg )



- 326** Oblong resin coffee or occasional table with reeded border, on baluster turned legs



- 327** Cantonese Famille  
 . Rose style round plate or plaque with ornate peacock & foliate decoration



- 328** Oriental style ginger jar lamp with foliate & bird decoration



- 329** Victorian style round  
 . occasional or coffee table with baluster turned column, on hipped reeded tripod with brass lionclaw feet



- 330** Georgian walnut  
 . demi-lune tea or hall table with fold-over top, gateleg support, bowed frieze, on square tapering legs



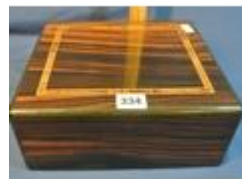
- 331** Edwardian 2 tier oval  
 . mahogany occasional table with cabriole legs & shaped stretcher



- 332** Victorian style timber  
 . wall mirror with ornate foliate & grapevine carved frame



- 333** American Typewriter  
 . Company Globe typewriter "American Dollar Five Machine" with case



- 334** Elie Bleu Paris inlaid  
 . & crossbanded rosewood humidor with hygrometer inset



- 336** Edwardian Sheraton  
 . style inlaid and crossbanded oval two tier etagere with raised gallery, string and crossbanded inlay, tapering legs, curved stretchers, on castors



- 337** Large red ground  
 . Persian Kashan carpet with traditional lozenge medallion design. 345x250cm



- 338** Edwardian brass  
 . framed hanging hall light with foliate etched panels



- 339** Victorian inlaid  
 . walnut oval occasional table with foliate & string inlay, barleytwist columns, & oblong stretcher



- 340** Edwardian mahogany
- 2 tier side or serving table with raised gallery & square chamfered legs



- 341** William & Mary
- inlaid & crossbanded walnut small bureau with drop-down front, pull-out supports, fitted interior, 2 drawers with brass drop handles, on barleytwist columns with shaped stretchers & bun feet



- 342** Art Deco style
- electric table lamp with ornate multi-coloured shade, on shaped round bronzed base



- 343** Regency design
- carved timber gilded oval mirror with ornate scroll & foliate decoration 115 x70cm



- 344** Edwardian design
- crossbanded bow fronted side or hall table with frieze drawers, drop handles, on shaped legs



- 345** Edwardian walnut & mahogany desk with leatherette inset, 5 drawers with brass handles, on turned reeded legs with brass castors



- 346** Edwardian mahogany
- occasional table with oblong top, turned shaped column, on concave plinth with three ball feet



- 347** Model brass ships
- telegraph with round top & spreading base



- 349** Victorian mahogany
- pembroke table with drop leaves, gateleg supports, with turned columns & legs & bracket feet



- 350** Victorian mahogany
- desk with railed top, tambour pull-down front, fitted interior, pull-out writing slope, leather inset, 2 drawers under with brass drop handles, on turned tapering legs



- 351** Edwardian style
- inlaid yew bachelors 2 tier table with pull-out shelf, drawer with brass drop handle, turned columns, on turned legs with castors



- 352** Oriental walnut
- jewellery box with lacquered interior, butterfly & round brass mounts



- 353** Victorian walnut tea caddy with domed top, fitted interior with lids



- 354** Victorian mahogany occasional table with tip-up round top, vase turned column, on hipped tripod



- 355** Irish Regency style bookcase with reeded borders, astragal glazed doors with shelved interior, carved & demi reeded columns, on carved lionclaw feet



- 356** Edwardian inlaid walnut pembroke table with D-shaped drop leaves, pull-out gateleg support, on square tapering legs



- 359** Edwardian mahogany stool with upholstered top & tapering legs



- 360** Victorian mahogany card table with fold-over top, baize surface, gateleg support, frieze drawer with round handles, on square tapering legs



- 361** Regency style crossbanded mahogany sewing table with lift-up lid, fitted interior, material drawer under, on scroll cabriole columns with shaped stretchers & claw feet



- 362** Vintage cello in leather carrying case.



- 363** Alhambra classic guitar, Muro del Alcoy, Spain, Model 9PA, No 2505, stamped, with hard case



- 364** Victorian mahogany occasional table with tip-up reeded top, turned column, on hipped tripod



- 365** William IV rosewood card table with swivel fold-over top, baize playing surface, on acanthus carved tapering column with collar, round base with carved scroll feet



- 366** Edwardian mahogany envelope card table with swivel top, counter wells, frieze drawer with brass handle, on square tapering legs with stretchers





- 367** Pair of Cloisonné & cast iron Oriental temple dog figures with gilt decoration



- 368** Art Deco style table lamp with angled panel shade & body on floral decorated round base



- 369** Victorian round occasional or lamp table with turned shaped column, on hipped tripod with pad feet



- 370** Victorian mahogany tea table with swivel fold-over top, rounded borders, turned tapering column, ball shaped collar, on splayed quadrapod with scroll feet



- 371** Victorian design cast iron water font with shaped stand



- 372** Vintage cast iron birdbath with figure of a cherub & shell shaped bowl



- 373** Pair of vintage cast iron bird / crane figures with shaped bases



- 374** Valiant cast iron French stove with door & shelf



- 375** Louis XV inlaid and crossbanded walnut and rosewood secretaire abbat with ormolu mounts, drop-down front shelf with fitted interior, drawers under, on bracket feet



- 376** Louis XV inlaid card table with ormolu mounted serpentine borders, ornate brass inlay, swivel top with baize playing surface, with inlaid apron, on ormolu mounted cabriole legs



- 377** Waterford Crystal flower or fruit bowl with wavy rim, on raised round base



- 378** Waterford Crystal cut glass round fruit or flower bowl with faceted decoration



- 379** Victorian brass fire fender with shaped rails



- 380** Georgian mahogany bureau with drop-down front, pull-out supports, fitted interior, 3 graduated drawers under with brass drop handles & pierced escutcheons, on bracket feet



- 386** Edwardian inlaid & crossbanded mahogany kneehole desk, 1 frieze & 6 side drawers with brass drop handles & escutcheons, napery drawer, shelved press under, on bracket feet



- 381** Persian red ground hearth rug with medallion design 170 x 118 cm



- 387** Victorian design cast iron umbrella & stick stand with foliate decoration, & drip tray



- 382** 21 piece Shelley Sheraton design tea service with ornate gilt & foliate decoration



- 388** Pair of ball shaped cast iron skillet pots with shaped handles



- 383** Guinness advertising ewer with figured decoration and shaped handle



- 389** V-shaped granite hearth with truncate mortar



- 384** Louis XV style stool with foliate upholstery, reeded tapering legs with shaped stretchers



- 390** Victorian mahogany round dining or library table raised on baluster turned column, on concave plinth with ball feet



- 385** Queen Anne crossbanded walnut & mahogany chest on chest with 2 short & 3 long drawers, base with 2 short & 2 long drawers, all with ornate brass drop handles & escutcheons, on ball feet



- 391** Set of 8 Waterford Crystal wine glasses with faceted & strawberry diamond decoration, faceted stems, on round bases



- 392** Waterford Crystal cut glass flared flower vase with strawberry diamond banding



- 393** Set of 6 Waterford crystal cut-glass champagne coup glasses with strawberry diamonds, knop stems and round bases



- 394** Terracotta ground full wool pile Afghan design rug with floral pattern 340 x 250 cm



- 395** Georgian mahogany kneehole desk with 9 drawers with brass drop handles & back plates, central press, on bracket feet



- 396** Edwardian design mahogany three section canterbury with shaped rails, drop-down front, on brass castors



- 397** Pair of ornate French style domed framed wall mirrors with ornate shell & foliate decoration



- 398** Regency style convex mirror with eagle surmount & ball decoration



- 399** Edwardian mahogany Pembroke table with D-shaped drop leaves, pull-out supports, frieze drawer with drop handles, on square tapering legs with castors



- 400** Victorian mahogany D-end dining table with 2 extra leaves inset, ornate scroll & foliate carved cabriole legs with claw on ball feet & castors



- 401** Victorian design mahogany occasional table with piecrust border, tip-up top, baluster turned reeded column, foliate decorated tripod with claw on ball feet



- 402** 14 piece Limoges breakfast service with scalloped borders, ornately decorated with scenes & foliage



- 403** Ivory ground full pile Kashmir rug with all-over Tree of Life design 170 x 115cm



- 404** Edwardian walnut stationery box with lift-up lid, sectioned interior





- 405** Edwardian mahogany
- pedestal desk with 3 frieze drawers, 6 side drawers, leatherette inset, drop handles, on bracket feet



- 406** Edwardian design
- small occasional table with drop leaves, pull-out supports, on vase turned column with reeded quadrapod and brass claw feet



- 407** Mariners brass
- compass with telescope in presentation case



- 408** Set of 3 mariners
- adjustable telescopes of graduated sizes in presentation box



- 409** Rich red ground
- Afghan double knot carpet with traditional Bokhara design, with elephant footprint design 350 x248cm



- 410** Georgian mahogany
- round 2 tier dumbwaiter or server with reeded borders, barleytwist brass columns, beehive tapering column, on tripod with brass cap toes & castors



- 411** Edwardian style
- walnut occasional table with cabriole legs & pad feet



- 412** Victorian porcelain
- figure of a boy with grape



- 413** Pair of Louis XV
- style hand-painted porcelain table centrepieces with ornate gilt & bird hand-painted decoration, gilt bronze finials & handles, on shaped brass bases



- 414** Pair of Capodimonte
- hand-painted flower vases with figured foliate & pierced decoration, on shaped bases



- 415** Edwardian inlaid &
- crossbanded Sheraton style card table with fold-over top, double gateleg support, inlaid shaped frieze, on inlaid square tapering legs with castors



- 416** Edwardian mahogany
- fuel cabinet with raised back, pull-out front with metal container, brass teardrop handle, on bracket feet



- 417** Set of 6 Waterford  
 . Crystal cut glass wine glasses with diamond decoration & round bases



- 418** Set of 6 Waterford  
 . Crystal sherry glasses with diamond decoration & round bases



- 419** Art Deco style  
 . electric table lamp with multi-coloured shade, shaped column & base



- 420** Georgian mahogany  
 . cellarette or wine cooler with sarcophagus shaped top, sectioned interior, on ball feet



- 421** Edwardian brass &  
 . metal fire fender with reeded rails



- 422** Waterford Crystal  
 . round fruit or flower bowl with angled faceted sides



- 423** Waterford Crystal  
 . hexagonal bowl with lid



- 424** Waterford Crystal cut  
 . glass domed desk clock



- 425** Edwardian walnut &  
 . mahogany slim bureau bookcase with dentil frieze, astragal glazed door, shelved interior, fall-down front with pull-out supports, fitted interior, 4 graduated drawers under with drop handles, on bracket feet



- 426** Victorian mahogany  
 . hexagonal shaped occasional or centre table with raised pierced gallery, twist reeded foliate decorated column, on carved tripod with pad feet



- 427** Iranian Kork wool  
 . hand woven Hamadan runner. 310x110 cm



- 428** Mariners brass  
 . folding hand held compass with level stamped Stanley, London



- 429** Mariners extending  
 . telescope on adjustable stand, stamped "Kelvin & Hughes London 1915"



- 430** Georgian crossbanded oak bureau bookcase, the top with panelled doors & shelved interior, drop-down front with pull-out supports, fitted interior, 4 graduated drawers under, with brass drop handles, on bracket feet



- 435** William IV rosewood teapoy with sarcophagus stepped shaped lid, interior fitted with four canisters, raised on rectangular column, on ornate hexagonal stepped and curved plinth, with bun feet



- 431** Set of 3 Regency style gilded pelmets with ornate shell, scroll & foliate decoration H30 m X 195 X 24 cm



- 436** Edwardian style 2 tier oval mahogany occasional table with serpentine sides & cabriole legs



- 432** Set of 5 Sillux handmade Italian wall lights, or Caddeo Cierre Studio, with wrought white tinted glass shades & red copperwork & backplates



- 437** "Guinness on Draught" enamel advertising sign H30 x 60 cm



- 438** "Open For Michelin Tyres" enamel advertising sign H 36 x30 cm



- 433** Bronzed figure of a racehorse with saddle & reins



- 439** Murphy's Irish Stout pub advertising sign 40x30cm



- 434** Terracotta ground Persian fine woven village carpet Baktia 300 x 216cm



- 440** Mahogany chest of five drawers with drop handles, on bracket feet



- 441** Victorian mahogany 4 tier whatnot with turned columns & finials, on shaped legs





- 442** Pair of cast iron
- garden wall lamps of angular form with shaped finials & backplates



- 443** Victorian style cast iron stool with round upholstered top, foliate decorated base



- 444** Blue and red ground Persian Tabriz carpet with traditional medallion design. 290x 200cm



- 445** Edwardian design yew & walnut bookcase with glass shelving, three frieze drawers with oval drop handles, shelved presses under, on bracket feet



- 446** Victorian mahogany bow fronted four tier whatnot with turned finials, foliate carving, on cabriole legs with stretchers



- 447** Two full pile Afghan Meshkin tribal runners with diamond pattern, each 260cm x 57cm



- 448** Edwardian gentleman's wash stand with fold-out top, pull-up mirror, press & drawer under, on square legs



- 449** Waterford Crystal cut glass small vase with diamond decoration & round base



- 450** Regency style mahogany tea table with fold-over top, gateleg support, triple reeded border, on ring turned legs with brass castors



- 451** 5 piece bamboo conservatory or patio suite with round glass topped table & 4 open armchairs



- 452** Shaped enamel Coca Cola advertising sign 45x86cm



- 453** Powers Whiskey enamel advertising sign 30x40cm



- 454** 'Opening Time is Guinness Time' advertising sign



- 455** Wingarnis metal advertising sign



- 456** Pair of crystal tankards "Kinsale Yacht Club"



- 457** Set of Waterford  
 . Crystal stemmed  
 liqueur glasses with  
 diamond decoration



- 458** Set of 6 Waterford  
 . Crystal liqueur  
 glasses with  
 strawberry diamonds,  
 knop stems & round  
 bases



- 459** Victorian mahogany  
 . open armchair with  
 pierced wheatsheaf  
 splat, serpentine  
 fronted seat, on  
 cabriole legs



- 460** Victorian mahogany  
 . stool with foliate  
 needlework, on  
 cabriole legs



- 461** Square Victorian style  
 . upholstered footstool  
 with baluster turned  
 legs and casters



- 463** Set of 6 Hepplewhite  
 . style mahogany  
 dining chairs with  
 pierced wheatsheaf  
 splats, domed tops,  
 drop-in seats, on  
 square tapering legs



- 464** Cast iron garden  
 . bench with shaped  
 arms & finials, ornate  
 bird figured & foliate  
 decoration, slatted  
 seat, on shaped legs



- 465** Pair of Victorian  
 . balloon back  
 occasional chairs with  
 serpentine fronted  
 seats, foliate  
 upholstery, on  
 cabriole legs with  
 castors



- 466** Pair of Victorian  
 . walnut occasional  
 chairs with shaped  
 rails, serpentine  
 fronted upholstered  
 seats, ornately carved  
 shaped legs



- 467** Pair of Victorian  
 . walnut occasional  
 chairs with shaped  
 rails, serpentine  
 fronted upholstered  
 seats, on tapering legs



- 468** Edwardian inlaid  
 . mahogany sofa with  
 shaped rails & arms,  
 foliate upholstery, on  
 cabriole legs with pad  
 feet



- 469** Georgian mahogany  
 . open armchair with  
 shield and foliate  
 decorated back,  
 shaped arms, foliate  
 upholstery, on  
 cabriole legs



- 470** Victorian style  
 . mahogany occasional  
 chair with pierced  
 wheatsheaf splat,  
 foliate upholstered  
 seat, on cabriole legs  
 with claw on ball feet



- 471** Walnut framed 3  
 . seater couch with  
 buttoned upholstery,  
 shaped arms, on ball  
 feet



- 472** Victorian walnut  
 . balloon back Ladies  
 chair with rose carved  
 pediment, serpentine  
 fronted seat, foliate  
 upholstery, on  
 cabriole scroll legs  
 with casters



- 474** Victorian style small  
 . chaise longue with  
 shaped back, on  
 baluster turned  
 tapering legs



- 475** Teak framed library  
 . armchair with  
 adjustable top &  
 footstool



- 476** Victorian armchair  
 . with foliate  
 upholstery, on turned  
 tapering legs with  
 casters



- 477** Edwardian style  
 . wingback armchair  
 with striped  
 upholstery, on  
 cabriole legs with pad  
 feet



#### **Conditions of Sale:**

1. The highest bidder for each lot shall be the purchaser. Should a dispute arise the Auctioneer shall at his discretion put the lot in dispute up for sale again or withdraw same from sale or declare the purchaser thereof.
2. The Auctioneers reserve for themselves the right to bid on behalf of the vendors and to reject or refuse to accept any bid without giving any reason therefor. The bidding shall be regulated by the Auctioneers and no bidding shall be retracted.
3. The price at which the bidder purchases each lot will be exclusive of V.A.T. and premium.
4. If required by the Auctioneer, the purchaser of each lot shall give his name and address to the Auctioneers representative and shall also immediately pay a cash deposit of 25% of the purchase money (or such sum as the Auctioneer may stipulate). The balance of the purchase money together with V.A.T. (if applicable), Auctioneers commission at the rate of 23% of the full purchase price plus V.A.T. at the prevailing rate shall be paid on the day of the sale, and if not so paid the Auctioneers reserve the right to charge interest on any unpaid balance at the rate of 18% per annum until payment is made.
5. Each purchaser's sale account must be paid in full before the removal of any lot.
6. Purchasers will be required to pay either in cash or by bankers draft. There is a service charge of 2% for credit cards.
7. The Auctioneers reserve the right to alter, divide, group or withdraw any lots either before or at any time during the sale.
8. The vendors or their agent reserve to themselves the right of repurchasing any lot, or part lot, at the knocked down price, or proportion of such price, where it is found necessary to let that lot, or part lot, remain and the decision of the Auctioneers respecting same shall be final and binding on all parties.
9. Each purchaser shall be deemed to have inspected and to be thoroughly acquainted with the contents and conditions of the lot or lots purchased and to have purchased same subject to all faults, deficiencies, imperfections, and errors (if any) of any description therein, and no allowance whatsoever shall be made in respect of any difficulty of access.
10. The description, measurements and numbers set out in the catalogue are believed to be correct but no guarantee or warranty is given or is to be implied as to the correctness of such descriptions, or the genuineness or authenticity of any lot or its fitness for any particular purpose.
11. Each lot shall, from the fall of the hammer, be at the sole risk of the purchaser and must be cleared and taken away, without fail, at the purchasers expense, in such order as the Auctioneers or their representative shall direct not later than 5.00 p.m. on the Friday following the sale, after which time any lot or lots remaining on the premises shall be liable for rent and expenses, storage and insurance charges, and will also be liable to be removed from the premises and left outside at the purchasers risk in all respects.
12. The purchaser will be responsible for all damage that it, its carriers, servants, or agents may do to the property of any third (and in particular to the vendors premises) in removing the lot(s).
13. If within seven days after the sale the Auctioneers have received notice in writing from the purchaser that a lot is not as described in the catalogue and this notice can be substantiated with evidence, the burden of proof to be upon the purchasers, then the Auctioneers at their discretion may rescind the sale and return the purchase price.
14. No liability will be accepted by the vendors or the Auctioneers for personal injuries of any description and from whatsoever cause arising, sustained by any person whilst on the property of the vendors for the purpose of inspection, or during the sale, or whilst removing any lots, or on the premises in connection with the sale.

15. Each purchaser shall be responsible for and will release and indemnify the vendors, their servants and agents, from and against all liability in relation to each lot or lots sold or otherwise.

16. Each purchaser shall provide all vehicles, equipment and labour necessary for the removal of purchases.

17. If the purchaser shall make default in payment of his purchase money or neglect to comply with these conditions, or any of them, all money paid by him or his agent at the time of sale shall be forfeited to the vendors who shall be at liberty to re-sell the lot or lots at such time or times as they may think proper and without notice to the party or parties making default or neglecting to comply with these conditions, and in case of non-payment thereof the same shall be recoverable as and for liquidated damages. Any surplus arising on such re-sales shall belong solely to the vendors. This condition shall not prejudice the vendors or Auctioneers right to enforce the contract made at this present sale.

18. Neither the vendors or the Auctioneers will hold themselves responsible for any lots while on the premises. No lots may be collected outside the dates and hours set out nor will the Auctioneers transfer lots from one buyer to another.

19. The vendors, their servants or agents shall not be liable for any loss, damage or injury occasioned to any purchaser, the purchasers servants or agents, or to any person or any property which may be caused by any defects, imperfection or malfunction in any lot or lots or contamination caused by same.

20. If any dispute or difference arises concerning any lot or the interpretation of these conditions, the same shall be settled by the Auctioneers whose decision shall be final and binding on all parties concerned.

#### **Paintings and Sculpture:**

**When the Forename(s) and Surname of the Artist are given, in our opinion this is a work of the Artist.**

**When the Initials of the Forename(s) and the Surname of the Artist are given, in our opinion this is a work of the period of the Artist which may be wholly or partly his work.**

**When the Surname only of the Artist is given, in our opinion this is a work by the school, or by one of the followers of the artist, or in his style and of uncertain date.**

**Purchasers are allowed seven days from the date of the Auction to satisfy themselves as to the accuracy of the catalogue description.**

**Please note the Conditions of Sale as displayed in the Auction Rooms.**

Est'd 1883

**WOODWARDS**

140 Years – 5 Generations



**Successful sales since 1883**

**We're selling property. Are you?**

We are experiencing strong demand for family homes throughout Cork City and beyond. If you are contemplating selling, talk to us. We have the knowledge gained over 3 centuries and 5 generations of experience that you will not get elsewhere.

Or new website **www.HomeMatch.ie** is our database listing the detailed requirements of hundreds of potential buyers. If you are looking, log in to [www.homematch.ie](http://www.homematch.ie) and let us know what you are looking for.

If you are selling, let us make a match with a potential buyer.

We are the First Irish auctioneers on the Internet and receive up to 30,000 visitors per month. Check us out at [WWW.WOODWARD.IE](http://WWW.WOODWARD.IE)

**Monthly Auctions of Antiques, Fine Art, Silver, Porcelain, and quality house contents**  
Held in our City Centre Auction Rooms in Cook Street and in Period Properties throughout Munster.

Free inspection and appraisal in our offices Monday - Friday.

### **The Full Service**

from start to finish includes:

Removal of saleable items to our auction rooms

Clearance and preparation of property including skips, garden, etc.

Marketing, advertising and internet,

Viewing and negotiation,

Sale, and monitoring of all stages up to contract and close.

**We are the longest established family firm of Auctioneers in Cork  
with a hard earned reputation for integrity and results.  
Call us for free advice on how to achieve the maximum price for your  
property**

**Successful sales since 1883**

**Joseph *WOODWARD* & Sons, Ltd.**

**26, Cook Street, Cork**

**[www.woodward.ie](http://www.woodward.ie)**